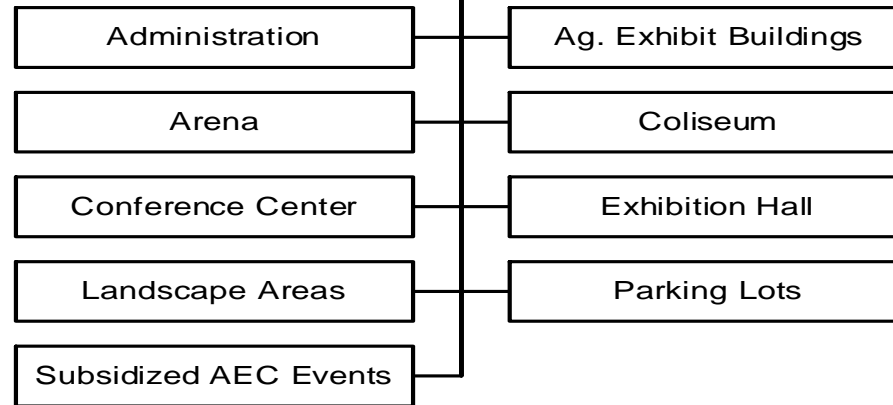


Alliant Energy Center of Dane County



Division/Program	FTE	Expenditures	Program Specific Revenues	Revenue Over/(Under) Expenses
Administration	13.000	\$2,136,000	\$329,800	(\$1,806,200)
Coliseum	5.300	\$1,959,300	\$2,109,500	\$150,200
Exhibition Hall	10.800	\$2,958,400	\$4,023,800	\$1,065,400
Conference Center	2.400	\$380,100	\$548,300	\$168,200
Arena	0.500	\$518,200	\$424,700	(\$93,500)
Agricultural Exhibit Buildings	1.200	\$333,800	\$230,900	(\$102,900)
Parking Lots	0.300	\$277,800	\$39,300	(\$238,500)
Landscape Areas	0.500	\$260,300	\$530,300	\$270,000
Alliant Energy Center of Dane County	34.000	\$8,823,900	\$8,236,600	(\$587,300) Appropriation

Division/Program	FTE	Expenditures	Program Specific Revenues	General Purpose Revenues
County Subsidized Alliant Energy Center Events	0.000	\$59,719	\$0	\$59,719 Appropriation
Alliant Energy Center of Dane County - Total	34.000	\$8,883,619	\$8,236,600	\$647,019 Memo Total

Dept:	Alliant Energy Center of Dane County	92	DANE COUNTY	Fund Name:	General Fund
Prgm:	Administration	110/00		Fund No:	1110

Mission:

The Alliant Energy Center of Dane County will manage and operate first rate venues for local, regional, national and international events. The facilities will consistently deliver superior, user-friendly services to all its customers, clients, tenants, visitors, guests and employees. The venues and grounds of Alliant Energy Center campus will be properly maintained and professionally and efficiently operated. The Center will benefit the community and citizens of Dane County by providing the econc and quality of life benefits related to its success in the convention, exposition, meeting and trade show industry and hosting entertainment, sporting, livestock exhibition, consumer and social events. The Center shall achieve these objectives with no General Fund operating subsidy.

Description:

The Alliant Energy Center complex encompasses over 160 acres of land, a variety of multi-purpose buildings and paved parking for over 5,800 cars. The Center provides a variety of activities for the citizens of Dane County, the State of Wisconsin, and neighboring states. Events include conventions, consumer shows, amateur sports, concerts, family shows, trade shows, agricultural events, youth hockey events, outdoor festivals, banquets, retail sales, and other activities such as the World Dairy Expo, The Midwest Horse Fair, and the Dane County Fair. Annual attendance at Center activities is approximately 1 million people. The Administration of the Center includes Event Service & Operations Service; Sales, Promotions and Public Relations; General Administration; and Physical Plant divisions. Approximately 1 of the Center's Administration expense budget is indirect charges from the Dane County General Fund. Expenses associated with 7,400 square feet of the Center's Administration Building are included in this cost center.

	Actual 2010	Adopted 2011	2010 Carry Forward	Board Transfers	Budget As Modified	2011 YTD	Estimated 2011	Executive Recommended
PROGRAM EXPENDITURES								
Personal Services	\$1,421,589	\$1,417,300	\$0	\$0	\$1,417,300	\$412,216	\$1,451,800	\$1,384,600
Operating Expenses	\$571,875	\$594,600	\$54,809	\$0	\$649,409	\$72,903	\$584,800	\$560,700
Contractual Services	\$221,271	\$221,700	\$0	\$0	\$221,700	\$72,603	\$220,400	\$190,700
Operating Capital	\$0	\$0	\$25,641	\$0	\$25,641	\$0	\$25,641	\$0
TOTAL	\$2,214,735	\$2,233,600	\$80,450	\$0	\$2,314,050	\$557,721	\$2,282,641	\$2,136,000
PROGRAM REVENUE								
Taxes	\$0	\$0	\$0	\$0	\$0	\$0	\$0	\$0
Intergovernmental Revenue	\$0	\$0	\$0	\$0	\$0	\$0	\$0	\$0
Licenses & Permits	\$0	\$0	\$0	\$0	\$0	\$0	\$0	\$0
Fines, Forfeits & Penalties	\$0	\$0	\$0	\$0	\$0	\$0	\$0	\$0
Public Charges for Services	\$386,939	\$343,400	\$0	\$0	\$343,400	\$0	\$393,300	\$329,700
Intergovernmental Charge for Services	\$0	\$0	\$0	\$0	\$0	\$0	\$0	\$0
Miscellaneous	\$111	\$300	\$0	\$0	\$300	\$25	\$300	\$100
Other Financing Sources	\$0	\$0	\$0	\$0	\$0	\$0	\$0	\$0
TOTAL	\$387,050	\$343,700	\$0	\$0	\$343,700	\$25	\$393,600	\$329,800
GPR SUPPORT	\$1,827,685	\$1,889,900			\$1,970,350			\$1,806,200
F.T.E. STAFF	13.500	13.500				13.500		13.000

Dept:	Alliant Energy Center of Dane County						92	Fund Name:	General Fund	
Prgm:	Administration						110/00	Fund No.:	1110	
DI#	2012 Base	Net Decision Items							2012 Adopted Budget	
		01	02	03	04	05	06	07		
PROGRAM EXPENDITURES										
Personal Services	\$1,450,500	(\$37,700)	\$1,800	\$0	\$0	(\$30,000)	\$0	\$0	\$1,384,600	
Operating Expenses	\$594,600	(\$33,600)	(\$300)	\$0	\$0	\$0	\$0	\$0	\$560,700	
Contractual Services	\$193,700	(\$3,000)	\$0	\$0	\$0	\$0	\$0	\$0	\$190,700	
Operating Capital	\$0	\$0	\$0	\$0	\$0	\$0	\$0	\$0	\$0	
TOTAL	\$2,238,800	(\$74,300)	\$1,500	\$0	\$0	(\$30,000)	\$0	\$0	\$2,136,000	
PROGRAM REVENUE										
Taxes	\$0	\$0	\$0	\$0	\$0	\$0	\$0	\$0	\$0	
Intergovernmental Revenue	\$0	\$0	\$0	\$0	\$0	\$0	\$0	\$0	\$0	
Licenses & Permits	\$0	\$0	\$0	\$0	\$0	\$0	\$0	\$0	\$0	
Fines, Forfeits & Penalties	\$0	\$0	\$0	\$0	\$0	\$0	\$0	\$0	\$0	
Public Charges for Services	\$343,400	(\$13,700)	\$0	\$0	\$0	\$0	\$0	\$0	\$329,700	
Intergovernmental Charge for Services	\$0	\$0	\$0	\$0	\$0	\$0	\$0	\$0	\$0	
Miscellaneous	\$300	(\$200)	\$0	\$0	\$0	\$0	\$0	\$0	\$100	
Other Financing Sources	\$0	\$0	\$0	\$0	\$0	\$0	\$0	\$0	\$0	
TOTAL	\$343,700	(\$13,900)	\$0	\$0	\$0	\$0	\$0	\$0	\$329,800	
GPR SUPPORT	\$1,895,100	(\$60,400)	\$1,500	\$0	\$0	(\$30,000)	\$0	\$0	\$1,806,200	
F.T.E. STAFF	13.500	0.000	0.000	0.000	0.000	(0.500)	0.000	0.000	13.000	

NARRATIVE INFORMATION ABOUT DECISION ITEMS SHOWN ABOVE		Expenditures	Revenue	GPR Support
2012 BUDGET BASE		\$2,238,800	\$343,700	\$1,895,100
DI #	AEC-ADMN-1 Event Changes			
DEPT	This decision item reflects the changes in the events that have occurred over the last year for 2011 and the projected changes for 2012.	(\$64,700)	(\$13,900)	(\$50,800)
EXEC	Approved as Requested. Also, adjust salary and benefit lines to reflect half of the unrepresented employees' Cost of Living Adjustment for 2012 being delayed until the end of the payroll year.	(\$9,600)	\$0	(\$9,600)
ADOPTED	Approved as Recommended	\$0	\$0	\$0
NET DI # AEC-ADMN-1		(\$74,300)	(\$13,900)	(\$60,400)

Dept:	Alliant Energy Center of Dane County 92	Fund Name:	General Fund
Prgm:	Administration 110/00	Fund No.:	1110

NARRATIVE INFORMATION ABOUT DECISION ITEMS SHOWN ON PREVIOUS PAGE			Expenditures	Revenue	GPR Support
DI #	AEC-ADMN-2	Inflation			
DEPT	This decision item increases the rental rates 4% and rental equipment & electrical rates 4% .		\$1,500	\$0	\$1,500
EXEC	Approved as Requester		\$0	\$0	\$0
ADOPTED	Approved as Recommended		\$0	\$0	\$0
NET DI # AEC-ADMN-2			\$1,500	\$0	\$1,500
DI #	AEC-ADMN-3	There is no Decision Item			
DEPT			\$0	\$0	\$0
EXEC			\$0	\$0	\$0
ADOPTED			\$0	\$0	\$0
NET DI # AEC-ADMN-3			\$0	\$0	\$0
DI #	AEC-ADMN-4	There is no Decision Item			
DEPT			\$0	\$0	\$0
EXEC			\$0	\$0	\$0
ADOPTED			\$0	\$0	\$0
NET DI # AEC-ADMN-4			\$0	\$0	\$0

Dept:	Alliant Energy Center of Dane County 92	Fund Name:	General Fund
Prgm:	Administration 110/00	Fund No.:	1110

NARRATIVE INFORMATION ABOUT DECISION ITEMS SHOWN ON PREVIOUS PAGE		Expenditures	Revenue	GPR Support
DI #	AEC-ADMN-5 Position Eliminations			
DEPT	This decision item eliminates the following filled positions: 1871, 2367, 1508. Position 2367 is transferred to Airport, Terminal Complex.	(\$30,000)	\$0	(\$30,000)
EXEC	Approved as Requester	\$0	\$0	\$0
ADOPTED	Approved as Recommended	\$0	\$0	\$0
	NET DI # AEC-ADMN-5	(\$30,000)	\$0	(\$30,000)

--	--	--	--

2012 ADOPTED BUDGET	\$2,136,000	\$329,800	\$1,806,200
----------------------------	-------------	-----------	-------------

Dept:	Alliant Energy Center of Dane County	92	DANE COUNTY			Fund Name:	General Fund
Prgm:	Coliseum	508/00				Fund No:	1110

Mission:

The Alliant Energy Center of Dane County will manage and operate first rate venues for local, regional, national and international events. The facilities will consistently deliver superior, user-friendly services to all its customers, clients, tenants, visitors, guests and employees. The venues and grounds of Alliant Energy Center campus will be properly maintained and professionally and efficiently operated. The Center will benefit the community and citizens of Dane County by providing the econc and quality of life benefits related to its success in the convention, exposition, meeting and trade show industry and hosting entertainment, sporting, livestock exhibition, assemblies, consumer and social events. The Center shall achieve these objectives with no General Fund operating subsidy.

Description:

The Veterans Memorial Coliseum is a multi-purpose arena with 7,700 permanent seats and a capacity of 10,200. The Coliseum cost center identifies by category the direct revenue and expenses for the facility. Activities and functions conducted in the Coliseum include sporting & entertainment events, touring trade shows, conventions, motor sports events, consumer expositions, major livestock events, concerts, and retail sales events.

	Actual 2010	Adopted 2011	2010 Carry Forward	Board Transfers	Budget As Modified	2011 YTD	Estimated 2011	Executive Recommended
PROGRAM EXPENDITURES								
Personal Services	\$856,017	\$1,074,400	\$0	\$0	\$1,074,400	\$258,213	\$796,500	\$834,500
Operating Expenses	\$429,083	\$967,900	\$0	\$0	\$967,900	\$230,572	\$867,000	\$896,400
Contractual Services	\$269,686	\$231,400	\$0	\$0	\$231,400	\$53,483	\$218,500	\$229,700
Operating Capital	\$0	\$0	\$371,883	\$0	\$371,883	\$0	\$371,883	\$0
TOTAL	\$1,554,787	\$2,273,700	\$371,883	\$0	\$2,645,583	\$542,268	\$2,253,883	\$1,960,600
PROGRAM REVENUE								
Taxes	\$0	\$0	\$0	\$0	\$0	\$0	\$0	\$0
Intergovernmental Revenue	\$202,704	\$196,500	\$0	\$0	\$196,500	\$83,043	\$172,800	\$174,200
Licenses & Permits	\$0	\$0	\$0	\$0	\$0	\$0	\$0	\$0
Fines, Forfeits & Penalties	\$0	\$0	\$0	\$0	\$0	\$0	\$0	\$0
Public Charges for Services	\$1,894,179	\$1,890,100	\$0	\$0	\$1,890,100	\$886,708	\$1,838,100	\$1,889,700
Intergovernmental Charge for Services	\$0	\$0	\$0	\$0	\$0	\$0	\$0	\$0
Miscellaneous	\$46,019	\$23,800	\$0	\$0	\$23,800	\$20,681	\$44,000	\$45,600
Other Financing Sources	\$0	\$0	\$0	\$0	\$0	\$0	\$0	\$0
TOTAL	\$2,142,902	\$2,110,400	\$0	\$0	\$2,110,400	\$990,431	\$2,054,900	\$2,109,500
GPR SUPPORT	(\$588,116)	\$163,300			\$535,183			(\$148,900)
F.T.E. STAFF	5.300	5.300				5.300		5.300

Dept:	Alliant Energy Center of Dane County		92						Fund Name:	General Fund
Prgm:	Coliseum		508/00						Fund No.:	1110
DI#	2012 Base	Net Decision Items							2012 Adopted Budget	
		01	02	03	04	05	06	07		
PROGRAM EXPENDITURES										
Personal Services	\$969,400	(\$147,700)	\$12,800	\$0	\$0	\$0	\$0	\$0	\$834,500	
Operating Expenses	\$1,011,400	(\$110,000)	(\$6,300)	\$0	\$0	\$0	\$0	\$0	\$895,100	
Contractual Services	\$227,700	\$0	\$2,000	\$0	\$0	\$0	\$0	\$0	\$229,700	
Operating Capital	\$0	\$0	\$0	\$0	\$0	\$0	\$0	\$0	\$0	
TOTAL	\$2,208,500	(\$257,700)	\$8,500	\$0	\$0	\$0	\$0	\$0	\$1,959,300	
PROGRAM REVENUE										
Taxes	\$0	\$0	\$0	\$0	\$0	\$0	\$0	\$0	\$0	
Intergovernmental Revenue	\$196,400	(\$22,200)	\$0	\$0	\$0	\$0	\$0	\$0	\$174,200	
Licenses & Permits	\$0	\$0	\$0	\$0	\$0	\$0	\$0	\$0	\$0	
Fines, Forfeits & Penalties	\$0	\$0	\$0	\$0	\$0	\$0	\$0	\$0	\$0	
Public Charges for Services	\$1,890,100	(\$36,300)	\$35,900	\$0	\$0	\$0	\$0	\$0	\$1,889,700	
Intergovernmental Charge for Services	\$0	\$0	\$0	\$0	\$0	\$0	\$0	\$0	\$0	
Miscellaneous	\$23,800	\$20,000	\$1,800	\$0	\$0	\$0	\$0	\$0	\$45,600	
Other Financing Sources	\$0	\$0	\$0	\$0	\$0	\$0	\$0	\$0	\$0	
TOTAL	\$2,110,300	(\$38,500)	\$37,700	\$0	\$0	\$0	\$0	\$0	\$2,109,500	
GPR SUPPORT	\$98,200	(\$219,200)	(\$29,200)	\$0	\$0	\$0	\$0	\$0	(\$150,200)	
F.T.E. STAFF	5.300	0.000	0.000	0.000	0.000	0.000	0.000	0.000	5.300	

NARRATIVE INFORMATION ABOUT DECISION ITEMS SHOWN ABOVE		Expenditures	Revenue	GPR Support
2012 BUDGET BASE		\$2,208,500	\$2,110,300	\$98,200
DI #	AEC-COLS-1 Event Changes			
DEPT	This decision item reflects the changes in the events that have occurred over the last year for 2011 and the projected changes for 2012.	(\$256,400)	(\$38,500)	(\$217,900)
EXEC	Approved as Requested	\$0	\$0	\$0
ADOPTED	Adjust budgeted debt service accounts to reflect the final debt service payment schedules for the 2011A and 2011B debt issues.	(\$1,300)	\$0	(\$1,300)
NET DI # AEC-COLS-1		(\$257,700)	(\$38,500)	(\$219,200)

Dept:	Alliant Energy Center of Dane County 92	Fund Name:	General Fund
Prgm:	Coliseum 508/00	Fund No.:	1110

NARRATIVE INFORMATION ABOUT DECISION ITEMS SHOWN ON PREVIOUS PAGE		Expenditures	Revenue	GPR Support
DI #	AEC-COLS-2 Inflation			
DEPT	This decision item increases the rental rates 4% and rental equipment & electrical rates 4% .	\$8,500	\$37,700	(\$29,200)
EXEC	Approved as Requester	\$0	\$0	\$0
ADOPTED	Approved as Recommended	\$0	\$0	\$0
	NET DI # AEC-COLS-2	\$8,500	\$37,700	(\$29,200)

--	--	--	--	--

2012 ADOPTED BUDGET		\$1,959,300	\$2,109,500	(\$150,200)
----------------------------	--	--------------------	--------------------	--------------------

Dept:	Alliant Energy Center of Dane County	92	DANE COUNTY	Fund Name:	General Fund
Prgm:	Exhibition Hall	510/00		Fund No:	1110

Mission:

The Alliant Energy Center of Dane County will manage and operate first rate venues for local, regional, national and international events. The facilities will consistently deliver superior, user-friendly services to all its customers, clients, tenants, visitors, guests and employees. The venues and grounds of Alliant Energy Center campus will be properly maintained and professionally and efficiently operated. The Center will benefit the community and citizens of Dane County by providing the econc and quality of life benefits related to its success in the convention, exposition, meeting and trade show industry and hosting entertainment, sporting, livestock exhibition, consumer and social events. The Center shall achieve these objectives with no General Fund operating subsidy.

Description:

The Exhibition Hall offers 100,000 square feet of continuous floor area plus approximately 30,000 square feet of lobby space. Activities and functions conducted in this facility include conventions, banquets, trade shows, consumer shows, antique shows and a variety of entertainment events such as dances, stage presentations and smaller concerts. Among the events that use the entire Hall are: World Dairy Expo, Midwest Horse Fair, Madison Area Builders Home Show, Deer and Turkey Expo, Dane County RV Show,, Quilt Show, Canoecopia, Garden Expo, and Madison Fishing Expo.

	Actual 2010	Adopted 2011	2010 Carry Forward	Board Transfers	Budget As Modified	2011 YTD	Estimated 2011	Executive Recommended
PROGRAM EXPENDITURES								
Personal Services	\$1,638,506	\$1,493,700	\$0	\$0	\$1,493,700	\$521,212	\$1,381,400	\$1,502,400
Operating Expenses	\$572,372	\$1,394,200	\$0	\$0	\$1,394,200	\$843,249	\$1,352,600	\$1,373,000
Contractual Services	\$75,717	\$85,700	\$20,000	\$0	\$105,700	\$20,497	\$89,300	\$83,300
Operating Capital	\$0	\$0	\$327,071	\$0	\$327,071	\$0	\$327,071	\$0
TOTAL	\$2,286,595	\$2,973,600	\$347,071	\$0	\$3,320,671	\$1,384,958	\$3,150,371	\$2,958,700
PROGRAM REVENUE								
Taxes	\$0	\$0	\$0	\$0	\$0	\$0	\$0	\$0
Intergovernmental Revenue	\$253,867	\$273,500	\$0	\$0	\$273,500	\$215,369	\$260,500	\$240,100
Licenses & Permits	\$0	\$0	\$0	\$0	\$0	\$0	\$0	\$0
Fines, Forfeits & Penalties	\$0	\$0	\$0	\$0	\$0	\$0	\$0	\$0
Public Charges for Services	\$4,010,472	\$4,146,700	\$300,000	\$0	\$4,446,700	\$2,083,671	\$3,928,400	\$3,600,700
Intergovernmental Charge for Services	\$0	\$0	\$0	\$0	\$0	\$0	\$0	\$0
Miscellaneous	\$191,412	\$47,800	\$0	\$0	\$47,800	\$44,903	\$182,200	\$183,000
Other Financing Sources	\$0	\$0	\$0	\$0	\$0	\$0	\$0	\$0
TOTAL	\$4,455,751	\$4,468,000	\$300,000	\$0	\$4,768,000	\$2,343,943	\$4,371,100	\$4,023,800
GPR SUPPORT	(\$2,169,156)	(\$1,494,400)			(\$1,447,329)			(\$1,065,100)
F.T.E. STAFF	12.800	12.800					12.800	10.800

Dept:	Alliant Energy Center of Dane County		92						Fund Name:	General Fund
Prgm:	Exhibition Hall		510/00						Fund No.:	1110
DI#	2012 Base	Net Decision Items							2012 Adopted Budget	
		01	02	03	04	05	06	07		
PROGRAM EXPENDITURES										
Personal Services	\$1,440,200	\$236,600	\$10,400	(\$64,400)	\$0	(\$120,400)	\$0	\$0	\$1,502,400	
Operating Expenses	\$1,408,900	(\$44,100)	\$7,900	\$0	\$0	\$0	\$0	\$0	\$1,372,700	
Contractual Services	\$82,000	\$0	\$1,300	\$0	\$0	\$0	\$0	\$0	\$83,300	
Operating Capital	\$0	\$0	\$0	\$0	\$0	\$0	\$0	\$0	\$0	
TOTAL	\$2,931,100	\$192,500	\$19,600	(\$64,400)	\$0	(\$120,400)	\$0	\$0	\$2,958,400	
PROGRAM REVENUE										
Taxes	\$0	\$0	\$0	\$0	\$0	\$0	\$0	\$0	\$0	
Intergovernmental Revenue	\$273,500	(\$33,400)	\$0	\$0	\$0	\$0	\$0	\$0	\$240,100	
Licenses & Permits	\$0	\$0	\$0	\$0	\$0	\$0	\$0	\$0	\$0	
Fines, Forfeits & Penalties	\$0	\$0	\$0	\$0	\$0	\$0	\$0	\$0	\$0	
Public Charges for Services	\$4,146,700	(\$644,200)	\$98,200	\$0	\$0	\$0	\$0	\$0	\$3,600,700	
Intergovernmental Charge for Services	\$0	\$0	\$0	\$0	\$0	\$0	\$0	\$0	\$0	
Miscellaneous	\$47,800	\$127,900	\$7,300	\$0	\$0	\$0	\$0	\$0	\$183,000	
Other Financing Sources	\$0	\$0	\$0	\$0	\$0	\$0	\$0	\$0	\$0	
TOTAL	\$4,468,000	(\$549,700)	\$105,500	\$0	\$0	\$0	\$0	\$0	\$4,023,800	
GPR SUPPORT	(\$1,536,900)	\$742,200	(\$85,900)	(\$64,400)	\$0	(\$120,400)	\$0	\$0	(\$1,065,400)	
F.T.E. STAFF	12.800	0.000	0.000	0.000	0.000	(2.000)	0.000	0.000	10.800	

NARRATIVE INFORMATION ABOUT DECISION ITEMS SHOWN ABOVE		Expenditures	Revenue	GPR Support
2012 BUDGET BASE		\$2,931,100	\$4,468,000	(\$1,536,900)
DI #	AEC-XHAL-1 Event Changes			
DEPT	This decision item reflects the changes in the events that have occurred over the last year for 2011 and the projected changes for 2012.	\$192,800	(\$549,700)	\$742,500
EXEC	Approved as Requested	\$0	\$0	\$0
ADOPTED	Adjust budgeted debt service accounts to reflect the final debt service payment schedules for the 2011A and 2011B debt issues.	(\$300)	\$0	(\$300)
NET DI # AEC-XHAL-1		\$192,500	(\$549,700)	\$742,200

Dept:	Alliant Energy Center of Dane County 92	Fund Name:	General Fund
Prgm:	Exhibition Hall 510/00	Fund No.:	1110

NARRATIVE INFORMATION ABOUT DECISION ITEMS SHOWN ON PREVIOUS PAGE			Expenditures	Revenue	GPR Support
DI #	AEC-XHAL-2	Inflation			
DEPT	This decision item increases the rental rates 4% and rental equipment & electrical rates 4% .		\$19,600	\$105,500	(\$85,900)
EXEC	Approved as Requester		\$0	\$0	\$0
ADOPTED	Approved as Recommended		\$0	\$0	\$0
NET DI # AEC-XHAL-2			\$19,600	\$105,500	(\$85,900)
DI #	AEC-XHAL-3	Unfund Position			
DEPT	This decision item removes funding for a position that has been unoccupied since April 2011, due to a promotion.		(\$64,400)	\$0	(\$64,400)
EXEC	Approved as Requested		\$0	\$0	\$0
ADOPTED	Approved as Recommended		\$0	\$0	\$0
NET DI # AEC-XHAL-3			(\$64,400)	\$0	(\$64,400)
DI #	AEC-XHAL-4	There is no Decision Item			
DEPT			\$0	\$0	\$0
EXEC			\$0	\$0	\$0
ADOPTED			\$0	\$0	\$0
NET DI # AEC-XHAL-4			\$0	\$0	\$0

Dept:	Alliant Energy Center of Dane County 92	Fund Name:	General Fund
Prgm:	Exhibition Hall 510/00	Fund No.:	1110

NARRATIVE INFORMATION ABOUT DECISION ITEMS SHOWN ON PREVIOUS PAGE		Expenditures	Revenue	GPR Support
DI #	AEC-XHAL-5 Position Eliminations			
DEPT	This decision item eliminates the following filled positions: 1871, 2367, 1508. Position 2367 is transferred to Airport, Terminal Complex.	(\$120,400)	\$0	(\$120,400)
EXEC	Approved as Requester	\$0	\$0	\$0
ADOPTED	Approved as Recommended	\$0	\$0	\$0
	NET DI # AEC-XHAL-5	(\$120,400)	\$0	(\$120,400)

--	--	--	--	--

2012 ADOPTED BUDGET		\$2,958,400	\$4,023,800	(\$1,065,400)
----------------------------	--	-------------	-------------	---------------

Dept:	Alliant Energy Center of Dane County	92	DANE COUNTY			Fund Name:	General Fund
Prgm:	Conference Center	512/00				Fund No:	1110

Mission:

The Alliant Energy Center of Dane County will manage and operate first rate venues for local, regional, national and international events. The facilities will consistently deliver superior, user-friendly services to all its customers, clients, tenants, visitors, guests and employees. The venues and grounds of Alliant Energy Center campus will be properly maintained and professionally and efficiently operated. The Center will benefit the community and citizens of Dane County by providing the econc and quality of life benefits related to its success in the convention, exposition, meeting and trade show industry and hosting entertainment, sporting, livestock exhibition, consumer and social events. The Center shall achieve these objectives with no General Fund operating subsidy.

Description:

The Conference Center, which is located within the Exhibition Hall building, includes twelve meeting rooms with moveable walls, a boardroom, upper level lounge, common area atrium, commercial kitchen and a lobby area. Activities and functions conducted in this facility include, banquets, meetings, professional exams, accreditations, receptions, and seminars.

	Actual 2010	Adopted 2011	2010 Carry Forward	Board Transfers	Budget As Modified	2011 YTD	Estimated 2011	Executive Recommended
PROGRAM EXPENDITURES								
Personal Services	\$247,651	\$369,700	\$0	\$0	\$369,700	\$61,418	\$616,300	\$266,400
Operating Expenses	\$74,188	\$85,200	\$0	\$0	\$85,200	\$19,069	\$82,200	\$93,800
Contractual Services	\$9,515	\$20,700	\$0	\$0	\$20,700	\$3,928	\$18,400	\$19,900
Operating Capital	\$0	\$0	\$43,028	\$0	\$43,028	\$0	\$43,028	\$0
TOTAL	\$331,354	\$475,600	\$43,028	\$0	\$518,628	\$84,415	\$759,928	\$380,100
PROGRAM REVENUE								
Taxes	\$0	\$0	\$0	\$0	\$0	\$0	\$0	\$0
Intergovernmental Revenue	\$3,502	\$4,800	\$0	\$0	\$4,800	\$693	\$3,800	\$4,000
Licenses & Permits	\$0	\$0	\$0	\$0	\$0	\$0	\$0	\$0
Fines, Forfeits & Penalties	\$0	\$0	\$0	\$0	\$0	\$0	\$0	\$0
Public Charges for Services	\$463,058	\$515,700	\$0	\$0	\$515,700	\$120,558	\$506,500	\$526,400
Intergovernmental Charge for Services	\$0	\$0	\$0	\$0	\$0	\$0	\$0	\$0
Miscellaneous	\$13,847	\$1,900	\$0	\$0	\$1,900	\$250	\$15,300	\$17,900
Other Financing Sources	\$0	\$0	\$0	\$0	\$0	\$0	\$0	\$0
TOTAL	\$480,407	\$522,400	\$0	\$0	\$522,400	\$121,501	\$525,600	\$548,300
GPR SUPPORT	(\$149,053)	(\$46,800)			(\$3,772)			(\$168,200)
F.T.E. STAFF	2.400	2.400					2.400	2.400

Dept:	Alliant Energy Center of Dane County		92						Fund Name:	General Fund
Prgm:	Conference Center		512/00						Fund No.:	1110
DI#	2012 Base	Net Decision Items							2012 Adopted Budget	
		01	02	03	04	05	06	07		
PROGRAM EXPENDITURES										
Personal Services	\$373,000	(\$107,400)	\$800	\$0	\$0	\$0	\$0	\$0	\$266,400	
Operating Expenses	\$87,000	\$6,600	\$200	\$0	\$0	\$0	\$0	\$0	\$93,800	
Contractual Services	\$19,500	\$0	\$400	\$0	\$0	\$0	\$0	\$0	\$19,900	
Operating Capital	\$0	\$0	\$0	\$0	\$0	\$0	\$0	\$0	\$0	
TOTAL	\$479,500	(\$100,800)	\$1,400	\$0	\$0	\$0	\$0	\$0	\$380,100	
PROGRAM REVENUE										
Taxes	\$0	\$0	\$0	\$0	\$0	\$0	\$0	\$0	\$0	
Intergovernmental Revenue	\$4,800	(\$800)	\$0	\$0	\$0	\$0	\$0	\$0	\$4,000	
Licenses & Permits	\$0	\$0	\$0	\$0	\$0	\$0	\$0	\$0	\$0	
Fines, Forfeits & Penalties	\$0	\$0	\$0	\$0	\$0	\$0	\$0	\$0	\$0	
Public Charges for Services	\$515,700	(\$3,400)	\$14,100	\$0	\$0	\$0	\$0	\$0	\$526,400	
Intergovernmental Charge for Services	\$0	\$0	\$0	\$0	\$0	\$0	\$0	\$0	\$0	
Miscellaneous	\$1,900	\$16,000	\$0	\$0	\$0	\$0	\$0	\$0	\$17,900	
Other Financing Sources	\$0	\$0	\$0	\$0	\$0	\$0	\$0	\$0	\$0	
TOTAL	\$522,400	\$11,800	\$14,100	\$0	\$0	\$0	\$0	\$0	\$548,300	
GPR SUPPORT	(\$42,900)	(\$112,600)	(\$12,700)	\$0	\$0	\$0	\$0	\$0	(\$168,200)	
F.T.E. STAFF	2.400	0.000	0.000	0.000	0.000	0.000	0.000	0.000	2.400	

NARRATIVE INFORMATION ABOUT DECISION ITEMS SHOWN ABOVE		Expenditures	Revenue	GPR Support
2012 BUDGET BASE		\$479,500	\$522,400	(\$42,900)
DI #	AEC-CONF-1 Event Changes			
DEPT	This decision item reflects the changes in the events that have occurred over the last year for 2011 and the projected changes for 2012.	(\$100,800)	\$11,800	(\$112,600)
EXEC	Approved as Requested	\$0	\$0	\$0
ADOPTED	Approved as Recommended	\$0	\$0	\$0
NET DI # AEC-CONF-1		(\$100,800)	\$11,800	(\$112,600)

Dept:	Alliant Energy Center of Dane County 92	Fund Name:	General Fund
Prgm:	Conference Center 512/00	Fund No.:	1110

NARRATIVE INFORMATION ABOUT DECISION ITEMS SHOWN ON PREVIOUS PAGE		Expenditures	Revenue	GPR Support
DI #	AEC-CONF-2 Inflation			
DEPT	This decision item increases the rental rates 4% and rental equipment & electrical rates 4% .	\$1,400	\$14,100	(\$12,700)
EXEC	Approved as Requester	\$0	\$0	\$0
ADOPTED	Approved as Recommended	\$0	\$0	\$0
	NET DI # AEC-CONF-2	\$1,400	\$14,100	(\$12,700)

--	--	--	--	--

2012 ADOPTED BUDGET	\$380,100	\$548,300	(\$168,200)
----------------------------	------------------	------------------	--------------------

Dept:	Alliant Energy Center of Dane County	92	DANE COUNTY			Fund Name:	General Fund
Prgm:	Arena	514/00				Fund No:	1110

Mission:

The Alliant Energy Center of Dane County will manage and operate first rate venues for local, regional, national and international events. The facilities will consistently deliver superior, user-friendly services to all its customers, clients, tenants, visitors, guests and employees. The venues and grounds of Alliant Energy Center campus will be properly maintained and professionally and efficiently operated. The Center will benefit the community and citizens of Dane County by providing the econc and quality of life benefits related to its success in the convention, exposition, meeting and trade show industry and hosting entertainment, sporting, livestock exhibition, consumer and social events. The Center shall achieve these objectives with no General Fund operating subsidy.

Description:

Built in 1953 and remodeled in 1993, the Arena offers 23,400 square feet of floor space. Activities and functions presented in the facility are auctions, retail/consumer shows, farm equipment expositions and sales, horse shows and livestock shows, and sales. From mid October through the end of February the building is dedicate UW Men's hockey practice and youth ice hockey programs.

	Actual 2010	Adopted 2011	2010 Carry Forward	Board Transfers	Budget As Modified	2011 YTD	Estimated 2011	Executive Recommended
PROGRAM EXPENDITURES								
Personal Services	\$181,863	\$87,600	\$0	\$0	\$87,600	\$45,618	\$166,700	\$160,900
Operating Expenses	\$167,493	\$303,800	\$0	\$0	\$303,800	\$231,347	\$366,400	\$344,000
Contractual Services	\$8,633	\$13,500	\$0	\$0	\$13,500	\$3,408	\$12,200	\$13,300
Operating Capital	\$0	\$0	\$35,465	\$0	\$35,465	\$0	\$35,465	\$0
TOTAL	\$357,989	\$404,900	\$35,465	\$0	\$440,365	\$280,372	\$580,765	\$518,200
PROGRAM REVENUE								
Taxes	\$0	\$0	\$0	\$0	\$0	\$0	\$0	\$0
Intergovernmental Revenue	\$188,177	\$188,500	\$0	\$0	\$188,500	\$744	\$188,500	\$188,800
Licenses & Permits	\$0	\$0	\$0	\$0	\$0	\$0	\$0	\$0
Fines, Forfeits & Penalties	\$0	\$0	\$0	\$0	\$0	\$0	\$0	\$0
Public Charges for Services	\$259,853	\$323,100	\$0	\$0	\$323,100	\$79,190	\$241,200	\$205,900
Intergovernmental Charge for Services	\$0	\$0	\$0	\$0	\$0	\$0	\$0	\$0
Miscellaneous	\$31,704	\$10,900	\$0	\$0	\$10,900	\$22,885	\$28,200	\$30,000
Other Financing Sources	\$0	\$0	\$0	\$0	\$0	\$0	\$0	\$0
TOTAL	\$479,734	\$522,500	\$0	\$0	\$522,500	\$102,819	\$457,900	\$424,700
GPR SUPPORT	(\$121,746)	(\$117,600)			(\$82,135)			\$93,500
F.T.E. STAFF	0.500	0.500					0.500	0.500

Dept: Alliant Energy Center of Dane County		92		Fund Name: General Fund					
Prgm: Arena		514/00		Fund No.: 1110					
DI#	2012 Base	Net Decision Items							2012 Adopted Budget
		01	02	03	04	05	06	07	
PROGRAM EXPENDITURES									
Personal Services	\$132,500	\$39,100	\$1,000	\$0	(\$11,700)	\$0	\$0	\$0	\$160,900
Operating Expenses	\$303,200	\$63,600	\$2,500	\$0	(\$25,300)	\$0	\$0	\$0	\$344,000
Contractual Services	\$13,000	\$0	\$300	\$0	\$0	\$0	\$0	\$0	\$13,300
Operating Capital	\$0	\$0	\$0	\$0	\$0	\$0	\$0	\$0	\$0
TOTAL	\$448,700	\$102,700	\$3,800	\$0	(\$37,000)	\$0	\$0	\$0	\$518,200
PROGRAM REVENUE									
Taxes	\$0	\$0	\$0	\$0	\$0	\$0	\$0	\$0	\$0
Intergovernmental Revenue	\$188,500	\$300	\$0	\$0	\$0	\$0	\$0	\$0	\$188,800
Licenses & Permits	\$0	\$0	\$0	\$0	\$0	\$0	\$0	\$0	\$0
Fines, Forfeits & Penalties	\$0	\$0	\$0	\$0	\$0	\$0	\$0	\$0	\$0
Public Charges for Services	\$323,100	(\$84,800)	\$4,600	\$0	(\$37,000)	\$0	\$0	\$0	\$205,900
Intergovernmental Charge for Services	\$0	\$0	\$0	\$0	\$0	\$0	\$0	\$0	\$0
Miscellaneous	\$10,900	\$18,000	\$1,100	\$0	\$0	\$0	\$0	\$0	\$30,000
Other Financing Sources	\$0	\$0	\$0	\$0	\$0	\$0	\$0	\$0	\$0
TOTAL	\$522,500	(\$66,500)	\$5,700	\$0	(\$37,000)	\$0	\$0	\$0	\$424,700
GPR SUPPORT	(\$73,800)	\$169,200	(\$1,900)	\$0	\$0	\$0	\$0	\$0	\$93,500
F.T.E. STAFF	0.500	0.000	0.000	0.000	0.000	0.000	0.000	0.000	0.500

NARRATIVE INFORMATION ABOUT DECISION ITEMS SHOWN ABOVE				Expenditures	Revenue	GPR Support
2012 BUDGET BASE				\$448,700	\$522,500	(\$73,800)
DI #	AEC-ARNA-1	Event Changes				
DEPT	This decision item reflects the changes in the events that have occurred over the last year for 2011 and the projected changes for 2012.			\$102,700	(\$66,500)	\$169,200
EXEC	Approved as Requested			\$0	\$0	\$0
ADOPTED	Approved as Recommended			\$0	\$0	\$0
NET DI # AEC-ARNA-1				\$102,700	(\$66,500)	\$169,200

Dept:	Alliant Energy Center of Dane County 92	Fund Name:	General Fund
Prgm:	Arena 514/00	Fund No.:	1110

NARRATIVE INFORMATION ABOUT DECISION ITEMS SHOWN ON PREVIOUS PAGE		Expenditures	Revenue	GPR Support
DI #	AEC-ARNA-2 Inflation			
DEPT	This decision item increases the rental rates 4% and rental equipment & electrical rates 4% .	\$3,800	\$5,700	(\$1,900)
EXEC	Approved as Requester	\$0	\$0	\$0
ADOPTED	Approved as Recommended	\$0	\$0	\$0
	NET DI # AEC-ARNA-2	\$3,800	\$5,700	(\$1,900)
DI #	AEC-ARNA-3			
DEPT	No Decision Item 3 for this Cost Center.	\$0	\$0	\$0
EXEC	Approved as Requested	\$0	\$0	\$0
ADOPTED	Approved as Recommended	\$0	\$0	\$0
	NET DI # AEC-ARNA-3	\$0	\$0	\$0
DI #	AEC-ARNA-4 End Arena Ice			
DEPT	This decision ends the rental of ice in the Arena building.	(\$37,000)	(\$37,000)	\$0
EXEC	Approved as Requested	\$0	\$0	\$0
ADOPTED	Approved as Recommended	\$0	\$0	\$0
	NET DI # AEC-ARNA-4	(\$37,000)	(\$37,000)	\$0
2012 ADOPTED BUDGET		\$518,200	\$424,700	\$93,500

Dept:	Alliant Energy Center of Dane County	92	DANE COUNTY	Fund Name:	General Fund
Prgm:	Agricultural Exhibit Buildings	516/00		Fund No:	1110

Mission:

The Alliant Energy Center of Dane County will manage and operate first rate venues for local, regional, national and international events. The facilities will consistently deliver superior, user-friendly services to all its customers, clients, tenants, visitors, guests and employees. The venues and grounds of Alliant Energy Center campus will be properly maintained and professionally and efficiently operated. The Center will benefit the community and citizens of Dane County by providing the econc and quality of life benefits related to its success in the convention, exposition, meeting and trade show industry and hosting entertainment, sporting, livestock exhibition, consumer and social events. The Center shall achieve these objectives with no General Fund operating subsidy.

Description:

The Agricultural Exhibit Buildings cost center identifies by category direct revenue and expenses for eight barns, one restroom/shower facility and the maintenance cost of asphalt surrounding these facilities. Activities and functions conducted in these facilities include consumer expositions, horse shows, livestock housing, shows and sales, trade shows and auctions. The facilities are rented as individual units for a specific function or in combination for larger events (attendance at World Dairy Expo, the Midwest Horse Fair, and the Dane County Fair exceeds 173,000 persons annually). These buildings serve in an ancillary role to the Arena, Exhibition Hall and Coliseum by providing important livestock exhibit space required by major events in those buildings.

	Actual 2010	Adopted 2011	2010 Carry Forward	Board Transfers	Budget As Modified	2011 YTD	Estimated 2011	Executive Recommended
PROGRAM EXPENDITURES								
Personal Services	\$179,382	\$181,400	\$0	\$0	\$181,400	\$10,709	\$135,000	\$179,200
Operating Expenses	\$106,064	\$147,000	\$0	\$0	\$147,000	\$15,913	\$160,800	\$129,400
Contractual Services	\$14,165	\$28,500	\$0	\$0	\$28,500	\$4,439	\$27,200	\$25,200
Operating Capital	\$228	\$0	\$33,201	\$0	\$33,201	\$0	\$33,201	\$0
TOTAL	\$299,839	\$356,900	\$33,201	\$0	\$390,101	\$31,061	\$356,201	\$333,800
PROGRAM REVENUE								
Taxes	\$0	\$0	\$0	\$0	\$0	\$0	\$0	\$0
Intergovernmental Revenue	\$481	\$600	\$0	\$0	\$600	\$0	\$600	\$500
Licenses & Permits	\$0	\$0	\$0	\$0	\$0	\$0	\$0	\$0
Fines, Forfeits & Penalties	\$0	\$0	\$0	\$0	\$0	\$0	\$0	\$0
Public Charges for Services	\$249,801	\$318,600	\$0	\$0	\$318,600	\$28,930	\$247,100	\$219,800
Intergovernmental Charge for Services	\$0	\$0	\$0	\$0	\$0	\$0	\$0	\$0
Miscellaneous	\$15,417	\$2,000	\$0	\$0	\$2,000	\$0	\$14,700	\$10,600
Other Financing Sources	\$0	\$0	\$0	\$0	\$0	\$0	\$0	\$0
TOTAL	\$265,699	\$321,200	\$0	\$0	\$321,200	\$28,930	\$262,400	\$230,900
GPR SUPPORT	\$34,140	\$35,700			\$68,901			\$102,900
F.T.E. STAFF	1.200	1.200					1.200	1.200

Dept:	Alliant Energy Center of Dane County		92						Fund Name:	General Fund
Prgm:	Agricultural Exhibit Buildings		516/00						Fund No.:	1110
DI#	2012 Base	Net Decision Items							2012 Adopted Budget	
		01	02	03	04	05	06	07		
PROGRAM EXPENDITURES										
Personal Services	\$185,500	(\$7,800)	\$1,500	\$0	\$0	\$0	\$0	\$0	\$179,200	
Operating Expenses	\$112,800	(\$3,600)	\$20,200	\$0	\$0	\$0	\$0	\$0	\$129,400	
Contractual Services	\$28,000	(\$3,000)	\$200	\$0	\$0	\$0	\$0	\$0	\$25,200	
Operating Capital	\$0	\$0	\$0	\$0	\$0	\$0	\$0	\$0	\$0	
TOTAL	\$326,300	(\$14,400)	\$21,900	\$0	\$0	\$0	\$0	\$0	\$333,800	
PROGRAM REVENUE										
Taxes	\$0	\$0	\$0	\$0	\$0	\$0	\$0	\$0	\$0	
Intergovernmental Revenue	\$500	\$0	\$0	\$0	\$0	\$0	\$0	\$0	\$500	
Licenses & Permits	\$0	\$0	\$0	\$0	\$0	\$0	\$0	\$0	\$0	
Fines, Forfeits & Penalties	\$0	\$0	\$0	\$0	\$0	\$0	\$0	\$0	\$0	
Public Charges for Services	\$318,600	(\$107,400)	\$8,600	\$0	\$0	\$0	\$0	\$0	\$219,800	
Intergovernmental Charge for Services	\$0	\$0	\$0	\$0	\$0	\$0	\$0	\$0	\$0	
Miscellaneous	\$2,000	\$8,000	\$600	\$0	\$0	\$0	\$0	\$0	\$10,600	
Other Financing Sources	\$0	\$0	\$0	\$0	\$0	\$0	\$0	\$0	\$0	
TOTAL	\$321,100	(\$99,400)	\$9,200	\$0	\$0	\$0	\$0	\$0	\$230,900	
GPR SUPPORT	\$5,200	\$85,000	\$12,700	\$0	\$0	\$0	\$0	\$0	\$102,900	
F.T.E. STAFF	1.200	0.000	0.000	0.000	0.000	0.000	0.000	0.000	1.200	

NARRATIVE INFORMATION ABOUT DECISION ITEMS SHOWN ABOVE		Expenditures	Revenue	GPR Support
2012 BUDGET BASE		\$326,300	\$321,100	\$5,200
DI #	AEC-AGRI-1 Event Changes			
DEPT	This decision item reflects the changes in the events that have occurred over the last year for 2011 and the projected changes for 2012.	(\$14,400)	(\$99,400)	\$85,000
EXEC	Approved as Requested	\$0	\$0	\$0
ADOPTED	Approved as Recommended	\$0	\$0	\$0
NET DI # AEC-AGRI-1		(\$14,400)	(\$99,400)	\$85,000

Dept:	Alliant Energy Center of Dane County 92	Fund Name:	General Fund
Prgm:	Agricultural Exhibit Buildings 516/00	Fund No.:	1110

NARRATIVE INFORMATION ABOUT DECISION ITEMS SHOWN ON PREVIOUS PAGE		Expenditures	Revenue	GPR Support
DI #	AEC-AGRI-2 Inflation			
DEPT	This decision item increases the rental rates 4% and rental equipment & electrical rates 4% .	\$21,900	\$9,200	\$12,700
EXEC	Approved as Requester	\$0	\$0	\$0
ADOPTED	Approved as Recommended	\$0	\$0	\$0
	NET DI # AEC-AGRI-2	\$21,900	\$9,200	\$12,700

--	--	--	--	--

2012 ADOPTED BUDGET	\$333,800	\$230,900	\$102,900
----------------------------	-----------	-----------	-----------

Dept:	Alliant Energy Center of Dane County	92	DANE COUNTY			Fund Name:	General Fund
Prgm:	Parking Lots	518/00				Fund No:	1110

Mission:

The Alliant Energy Center of Dane County will manage and operate first rate venues for local, regional, national and international events. The facilities will consistently deliver superior, user-friendly services to all its customers, clients, tenants, visitors, guests and employees. The venues and grounds of Alliant Energy Center campus will be properly maintained and professionally and efficiently operated. The Center will benefit the community and citizens of Dane County by providing the econc and quality of life benefits related to its success in the convention, exposition, meeting and trade show industry and hosting entertainment, sporting, livestock exhibition, consumer and social events. The Center shall achieve these objectives with no General Fund operating subsidy.

Description:

The Parking Lots cost center identifies by category revenue for approximately 36 acres of land with 5,500 parking stalls, connecting roadways and walkways. Much of the area is asphalt or concrete paved to assist in attendees ingress and egress of events at the Coliseum, Exhibition Hall, Conference Center, Arena, and Willow Island. Events which have utilized Parking Lots for programming include World Dairy Expo, Dane County Fair, RV Shows, Americruise, Family Motor Coach, Goldw Good Sam Club, car and boat sales, and custom car shows.

	Actual 2010	Adopted 2011	2010 Carry Forward	Board Transfers	Budget As Modified	2011 YTD	Estimated 2011	Executive Recommended
PROGRAM EXPENDITURES								
Personal Services	\$76,203	\$100,600	\$0	\$0	\$100,600	\$21,550	\$65,000	\$73,600
Operating Expenses	\$67,454	\$165,200	\$0	\$0	\$165,200	\$23,779	\$140,500	\$184,400
Contractual Services	\$10,825	\$22,200	\$0	\$0	\$22,200	\$5,345	\$20,300	\$19,900
Operating Capital	\$0	\$0	\$52,124	\$0	\$52,124	\$0	\$52,124	\$0
TOTAL	\$154,482	\$288,000	\$52,124	\$0	\$340,124	\$50,674	\$277,924	\$277,900
PROGRAM REVENUE								
Taxes	\$0	\$0	\$0	\$0	\$0	\$0	\$0	\$0
Intergovernmental Revenue	\$367	\$900	\$0	\$0	\$900	\$0	\$900	\$900
Licenses & Permits	\$0	\$0	\$0	\$0	\$0	\$0	\$0	\$0
Fines, Forfeits & Penalties	\$0	\$0	\$0	\$0	\$0	\$0	\$0	\$0
Public Charges for Services	\$35,189	\$85,500	\$0	\$0	\$85,500	\$24,237	\$31,400	\$34,500
Intergovernmental Charge for Services	\$0	\$0	\$0	\$0	\$0	\$0	\$0	\$0
Miscellaneous	\$5,030	\$1,900	\$0	\$0	\$1,900	\$1,772	\$4,000	\$3,900
Other Financing Sources	\$0	\$0	\$0	\$0	\$0	\$0	\$0	\$0
TOTAL	\$40,587	\$88,300	\$0	\$0	\$88,300	\$26,010	\$36,300	\$39,300
GPR SUPPORT	\$113,895	\$199,700			\$251,824			\$238,600
F.T.E. STAFF	0.300	0.300					0.300	0.300

Dept: Alliant Energy Center of Dane County		92		Fund Name: General Fund					
Prgm: Parking Lots		518/00		Fund No.: 1110					
DI#	2012 Base	Net Decision Items							2012 Adopted Budget
		01	02	03	04	05	06	07	
PROGRAM EXPENDITURES									
Personal Services	\$98,000	(\$25,200)	\$800	\$0	\$0	\$0	\$0	\$0	\$73,600
Operating Expenses	\$198,900	\$1,300	(\$15,900)	\$0	\$0	\$0	\$0	\$0	\$184,300
Contractual Services	\$20,900	(\$1,100)	\$100	\$0	\$0	\$0	\$0	\$0	\$19,900
Operating Capital	\$0	\$0	\$0	\$0	\$0	\$0	\$0	\$0	\$0
TOTAL	\$317,800	(\$25,000)	(\$15,000)	\$0	\$0	\$0	\$0	\$0	\$277,800
PROGRAM REVENUE									
Taxes	\$0	\$0	\$0	\$0	\$0	\$0	\$0	\$0	\$0
Intergovernmental Revenue	\$900	\$0	\$0	\$0	\$0	\$0	\$0	\$0	\$900
Licenses & Permits	\$0	\$0	\$0	\$0	\$0	\$0	\$0	\$0	\$0
Fines, Forfeits & Penalties	\$0	\$0	\$0	\$0	\$0	\$0	\$0	\$0	\$0
Public Charges for Services	\$85,500	(\$51,100)	\$100	\$0	\$0	\$0	\$0	\$0	\$34,500
Intergovernmental Charge for Services	\$0	\$0	\$0	\$0	\$0	\$0	\$0	\$0	\$0
Miscellaneous	\$1,900	\$2,000	\$0	\$0	\$0	\$0	\$0	\$0	\$3,900
Other Financing Sources	\$0	\$0	\$0	\$0	\$0	\$0	\$0	\$0	\$0
TOTAL	\$88,300	(\$49,100)	\$100	\$0	\$0	\$0	\$0	\$0	\$39,300
GPR SUPPORT	\$229,500	\$24,100	(\$15,100)	\$0	\$0	\$0	\$0	\$0	\$238,500
F.T.E. STAFF	0.300	0.000	0.000	0.000	0.000	0.000	0.000	0.000	0.300

NARRATIVE INFORMATION ABOUT DECISION ITEMS SHOWN ABOVE		Expenditures	Revenue	GPR Support
2012 BUDGET BASE		\$317,800	\$88,300	\$229,500
DI #	AEC-PARK-1 Event Changes			
DEPT	This decision item reflects the changes in the events that have occurred over the last year for 2011 and the projected changes for 2012.	(\$24,900)	(\$49,100)	\$24,200
EXEC	Approved as Requested	\$0	\$0	\$0
ADOPTED	Adjust budgeted debt service accounts to reflect the final debt service payment schedules for the 2011A and 2011B debt issues.	(\$100)	\$0	(\$100)
NET DI # AEC-PARK-1		(\$25,000)	(\$49,100)	\$24,100

Dept:	Alliant Energy Center of Dane County 92	Fund Name:	General Fund
Prgm:	Parking Lots 518/00	Fund No.:	1110

NARRATIVE INFORMATION ABOUT DECISION ITEMS SHOWN ON PREVIOUS PAGE		Expenditures	Revenue	GPR Support
DI #	AEC-PARK-2 Inflation			
DEPT	This decision item increases the rental rates 4% and rental equipment & electrical rates 4% .	(\$15,000)	\$100	(\$15,100)
EXEC	Approved as Requester	\$0	\$0	\$0
ADOPTED	Approved as Recommended	\$0	\$0	\$0
	NET DI # AEC-PARK-2	(\$15,000)	\$100	(\$15,100)

--	--	--	--	--

2012 ADOPTED BUDGET	\$277,800	\$39,300	\$238,500
----------------------------	-----------	----------	-----------

Dept:	Alliant Energy Center of Dane County	92	DANE COUNTY	Fund Name:	General Fund
Prgm:	Landscape Areas	520/00		Fund No:	1110

Mission:

The Alliant Energy Center of Dane County will manage and operate first rate venues for local, regional, national and international events. The facilities will consistently deliver superior, user-friendly services to all its customers, clients, tenants, visitors, guests and employees. The venues and grounds of Alliant Energy Center campus will be properly maintained and professionally and efficiently operated. The Center will benefit the community and citizens of Dane County by providing the econc and quality of life benefits related to its success in the convention, exposition, meeting and trade show industry and hosting entertainment, sporting, livestock exhibition, consumer and social events. The Center shall achieve these objectives with no General Fund operating subsidy.

Description:

The Landscape Areas cost center identifies by category direct revenue and expenses for the general upkeep and maintenance of approximately 120 acres of park surrounding the Parking Lots. This includes Rimrock Greenway, Willow Island, ponds, Lyckberg Park, Quann Park and the outdoor event marquee. Portions of this land are held for potential expansion of the Center. This area is used by Dane County Fair, company picnics,, Komen Race for the Cure, horse shows, Goldwing, Brafest, World Dairy Expo, festivals and entertainment events.

	Actual 2010	Adopted 2011	2010 Carry Forward	Board Transfers	Budget As Modified	2011 YTD	Estimated 2011	Executive Recommended
PROGRAM EXPENDITURES								
Personal Services	\$59,143	\$73,600	\$0	\$0	\$73,600	\$11,964	\$51,900	\$64,100
Operating Expenses	\$49,606	\$59,400	\$0	\$0	\$59,400	\$9,585	\$63,500	\$80,700
Contractual Services	\$155,011	\$183,900	\$0	\$0	\$183,900	\$1,145	\$114,600	\$115,600
Operating Capital	\$0	\$0	\$18,960	\$0	\$18,960	\$0	\$18,960	\$0
TOTAL	\$263,760	\$316,900	\$18,960	\$0	\$335,860	\$22,694	\$248,960	\$260,400
PROGRAM REVENUE								
Taxes	\$0	\$0	\$0	\$0	\$0	\$0	\$0	\$0
Intergovernmental Revenue	\$493	\$700	\$0	\$0	\$700	\$0	\$600	\$600
Licenses & Permits	\$0	\$0	\$0	\$0	\$0	\$0	\$0	\$0
Fines, Forfeits & Penalties	\$0	\$0	\$0	\$0	\$0	\$0	\$0	\$0
Public Charges for Services	\$476,524	\$587,700	\$0	\$0	\$587,700	\$79,165	\$424,100	\$491,800
Intergovernmental Charge for Services	\$0	\$0	\$0	\$0	\$0	\$0	\$0	\$0
Miscellaneous	\$36,380	\$22,900	\$0	\$0	\$22,900	\$750	\$37,800	\$37,900
Other Financing Sources	\$0	\$0	\$0	\$0	\$0	\$0	\$0	\$0
TOTAL	\$513,397	\$611,300	\$0	\$0	\$611,300	\$79,915	\$462,500	\$530,300
GPR SUPPORT	(\$249,637)	(\$294,400)			(\$275,440)			(\$269,900)
F.T.E. STAFF	0.500	0.500					0.500	0.500

Dept:	Alliant Energy Center of Dane County		92						Fund Name:	General Fund
Prgm:	Landscape Areas		520/00						Fund No.:	1110
DI#	2012 Base	Net Decision Items							2012 Adopted Budget	
		01	02	03	04	05	06	07		
PROGRAM EXPENDITURES										
Personal Services	\$70,400	(\$7,000)	\$700	\$0	\$0	\$0	\$0	\$0	\$64,100	
Operating Expenses	\$72,800	\$2,400	\$5,400	\$0	\$0	\$0	\$0	\$0	\$80,600	
Contractual Services	\$183,800	(\$68,300)	\$100	\$0	\$0	\$0	\$0	\$0	\$115,600	
Operating Capital	\$0	\$0	\$0	\$0	\$0	\$0	\$0	\$0	\$0	
TOTAL	\$327,000	(\$72,900)	\$6,200	\$0	\$0	\$0	\$0	\$0	\$260,300	
PROGRAM REVENUE										
Taxes	\$0	\$0	\$0	\$0	\$0	\$0	\$0	\$0	\$0	
Intergovernmental Revenue	\$600	\$0	\$0	\$0	\$0	\$0	\$0	\$0	\$600	
Licenses & Permits	\$0	\$0	\$0	\$0	\$0	\$0	\$0	\$0	\$0	
Fines, Forfeits & Penalties	\$0	\$0	\$0	\$0	\$0	\$0	\$0	\$0	\$0	
Public Charges for Services	\$587,700	(\$98,700)	\$2,800	\$0	\$0	\$0	\$0	\$0	\$491,800	
Intergovernmental Charge for Services	\$0	\$0	\$0	\$0	\$0	\$0	\$0	\$0	\$0	
Miscellaneous	\$22,900	\$15,000	\$0	\$0	\$0	\$0	\$0	\$0	\$37,900	
Other Financing Sources	\$0	\$0	\$0	\$0	\$0	\$0	\$0	\$0	\$0	
TOTAL	\$611,200	(\$83,700)	\$2,800	\$0	\$0	\$0	\$0	\$0	\$530,300	
GPR SUPPORT	(\$284,200)	\$10,800	\$3,400	\$0	\$0	\$0	\$0	\$0	(\$270,000)	
F.T.E. STAFF	0.500	0.000	0.000	0.000	0.000	0.000	0.000	0.000	0.500	

NARRATIVE INFORMATION ABOUT DECISION ITEMS SHOWN ABOVE		Expenditures	Revenue	GPR Support
2012 BUDGET BASE		\$327,000	\$611,200	(\$284,200)
DI #	AEC-LAND-1 Event Changes			
DEPT	This decision item reflects the changes in the events that have occurred over the last year for 2011 and the projected changes for 2012.	(\$72,800)	(\$83,700)	\$10,900
EXEC	Approved as Requested	\$0	\$0	\$0
ADOPTED	Adjust budgeted debt service accounts to reflect the final debt service payment schedules for the 2011A and 2011B debt issues.	(\$100)	\$0	(\$100)
NET DI # AEC-LAND-1		(\$72,900)	(\$83,700)	\$10,800

Dept:	Alliant Energy Center of Dane County 92	Fund Name:	General Fund
Prgm:	Landscape Areas 520/00	Fund No.:	1110

NARRATIVE INFORMATION ABOUT DECISION ITEMS SHOWN ON PREVIOUS PAGE		Expenditures	Revenue	GPR Support
DI #	AEC-LAND-2 Inflation			
DEPT	This decision item increases the rental rates 4% and rental equipment & electrical rates 4% .	\$6,200	\$2,800	\$3,400
EXEC	Approved as Requester	\$0	\$0	\$0
ADOPTED	Approved as Recommended	\$0	\$0	\$0
	NET DI # AEC-LAND-2	\$6,200	\$2,800	\$3,400

--	--	--	--	--

2012 ADOPTED BUDGET	\$260,300	\$530,300	(\$270,000)
----------------------------	------------------	------------------	--------------------

Dept:	Alliant Energy Center of Dane County	27	DANE COUNTY			Fund Name:	General Fund
Prgm:	Subsidized AEC Events	129/00				Fund No:	1110

Mission:

To provide a wide variety of events that focus on youth, community, health, county-wide employment, the dairy and agriculture industries, the environment, veterans other aspects of the community of benefit to county residents and visitors from all over the world.

Description:

Many events of benefit to the entire community cannot afford the full cost of the facilities at the Alliant Energy Center. The County Board and County Executive, through resolutions or budgets, have identified specific events for which the County General Fund pays a portion of the Alliant Energy Center fees.

	Actual 2010	Adopted 2011	2010 Carry Forward	Board Transfers	Budget As Modified	2011 YTD	Estimated 2011	Executive Recommended
PROGRAM EXPENDITURES								
Personal Services	\$0	\$0	\$0	\$0	\$0	\$0	\$0	\$0
Operating Expenses	\$62,821	\$61,250	\$0	\$0	\$61,250	\$12,265	\$61,250	\$59,719
Contractual Services	\$0	\$0	\$0	\$0	\$0	\$0	\$0	\$0
Operating Capital	\$0	\$0	\$0	\$0	\$0	\$0	\$0	\$0
TOTAL	\$62,821	\$61,250	\$0	\$0	\$61,250	\$12,265	\$61,250	\$59,719
PROGRAM REVENUE								
Taxes	\$0	\$0	\$0	\$0	\$0	\$0	\$0	\$0
Intergovernmental Revenue	\$0	\$0	\$0	\$0	\$0	\$0	\$0	\$0
Licenses & Permits	\$0	\$0	\$0	\$0	\$0	\$0	\$0	\$0
Fines, Forfeits & Penalties	\$0	\$0	\$0	\$0	\$0	\$0	\$0	\$0
Public Charges for Services	\$0	\$0	\$0	\$0	\$0	\$0	\$0	\$0
Intergovernmental Charge for Services	\$0	\$0	\$0	\$0	\$0	\$0	\$0	\$0
Miscellaneous	\$0	\$0	\$0	\$0	\$0	\$0	\$0	\$0
Other Financing Sources	\$0	\$0	\$0	\$0	\$0	\$0	\$0	\$0
TOTAL	\$0	\$0	\$0	\$0	\$0	\$0	\$0	\$0
GPR SUPPORT	\$62,821	\$61,250			\$61,250			\$59,719
F.T.E. STAFF	0.000	0.000					0.000	0.000

Dept: Alliant Energy Center of Dane County		27		Fund Name: General Fund					
Prgm: Subsidized AEC Events		129/00		Fund No.: 1110					
DI#	2012 Base	Net Decision Items							2012 Adopted Budget
		01	02	03	04	05	06	07	
PROGRAM EXPENDITURES									
Personal Services	\$0	\$0	\$0	\$0	\$0	\$0	\$0	\$0	\$0
Operating Expenses	\$61,250	(\$1,531)	\$0	\$0	\$0	\$0	\$0	\$0	\$59,719
Contractual Services	\$0	\$0	\$0	\$0	\$0	\$0	\$0	\$0	\$0
Operating Capital	\$0	\$0	\$0	\$0	\$0	\$0	\$0	\$0	\$0
TOTAL	\$61,250	(\$1,531)	\$0	\$0	\$0	\$0	\$0	\$0	\$59,719
PROGRAM REVENUE									
Taxes	\$0	\$0	\$0	\$0	\$0	\$0	\$0	\$0	\$0
Intergovernmental Revenue	\$0	\$0	\$0	\$0	\$0	\$0	\$0	\$0	\$0
Licenses & Permits	\$0	\$0	\$0	\$0	\$0	\$0	\$0	\$0	\$0
Fines, Forfeits & Penalties	\$0	\$0	\$0	\$0	\$0	\$0	\$0	\$0	\$0
Public Charges for Services	\$0	\$0	\$0	\$0	\$0	\$0	\$0	\$0	\$0
Intergovernmental Charge for Services	\$0	\$0	\$0	\$0	\$0	\$0	\$0	\$0	\$0
Miscellaneous	\$0	\$0	\$0	\$0	\$0	\$0	\$0	\$0	\$0
Other Financing Sources	\$0	\$0	\$0	\$0	\$0	\$0	\$0	\$0	\$0
TOTAL	\$0	\$0	\$0	\$0	\$0	\$0	\$0	\$0	\$0
GPR SUPPORT	\$61,250	(\$1,531)	\$0	\$0	\$0	\$0	\$0	\$0	\$59,719
F.T.E. STAFF	0.000	0.000	0.000	0.000	0.000	0.000	0.000	0.000	0.000

NARRATIVE INFORMATION ABOUT DECISION ITEMS SHOWN ABOVE				Expenditures	Revenue	GPR Support
2012 BUDGET BASE				\$61,250	\$0	\$61,250
DI #	AEC-SUBE-1	Civic Events				
DEPT	Reduce funding for Subsidized Events by 2.5% through a reduction in the Civic Events line.			(\$1,531)	\$0	(\$1,531)
EXEC	Approved as Requested			\$0	\$0	\$0
ADOPTED	Approved as Recommended			\$0	\$0	\$0
NET DI # AEC-SUBE-1				(\$1,531)	\$0	(\$1,531)
2012 ADOPTED BUDGET				\$59,719	\$0	\$59,719