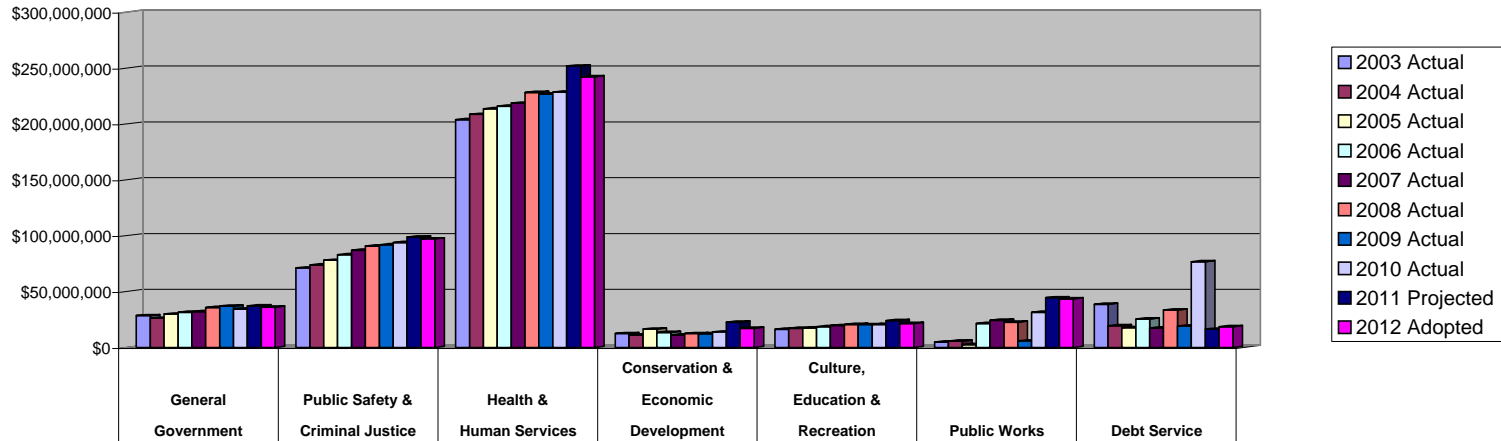


V. STATISTICAL & SUPPLEMENTAL DATA

**COUNTY OF DANE
OPERATING EXPENDITURES BY ACTIVITY
LAST TEN FISCAL YEARS**

Fiscal Year	General Government	Public Safety & Criminal Justice	Health & Human Services	Conservation & Economic Development	Culture, Education & Recreation	Public Works	Debt Service	Total
2003 Actual	\$28,410,845	\$71,079,209	\$203,928,526	\$12,380,110	\$16,241,208	\$4,876,562	\$38,673,925	\$375,590,385
2004 Actual	\$26,127,131	\$73,751,722	\$208,565,761	\$11,032,578	\$17,058,636	\$5,573,155	\$19,326,930	\$361,435,913
2005 Actual	\$29,885,669	\$77,993,688	\$213,692,548	\$16,383,652	\$17,398,303	\$2,480,412	\$17,681,156	\$375,515,428
2006 Actual	\$31,498,079	\$82,928,993	\$215,819,208	\$13,377,770	\$18,476,576	\$21,384,037	\$25,372,272	\$408,856,935
2007 Actual	\$32,104,652	\$87,078,390	\$218,597,435	\$11,174,896	\$19,532,536	\$24,367,767	\$17,416,794	\$410,272,470
2008 Actual	\$35,707,767	\$90,639,939	\$228,186,914	\$12,369,639	\$20,538,466	\$22,595,206	\$33,536,844	\$443,574,775
2009 Actual	\$36,999,352	\$91,896,024	\$226,806,179	\$12,281,626	\$20,424,367	\$5,800,932	\$19,233,693	\$413,442,173
2010 Actual	\$34,385,455	\$93,883,954	\$228,473,259	\$13,805,682	\$20,639,422	\$31,361,372	\$76,644,593	\$499,193,737
2011 Projected	\$37,057,737	\$98,800,538	\$251,823,187	\$22,629,126	\$23,983,807	\$44,480,152	\$16,393,559	\$495,168,106
2012 Adopted	\$35,998,637	\$97,164,406	\$242,293,844	\$17,121,426	\$21,310,385	\$43,502,220	\$18,636,200	\$476,027,118

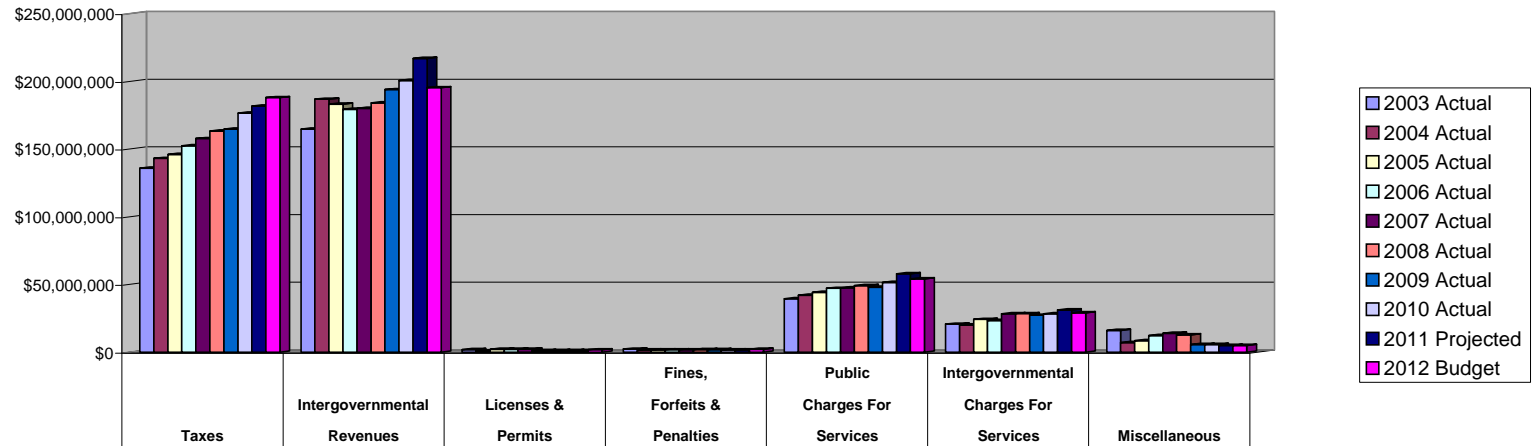
Operating Expenditures by Activity



**COUNTY OF DANE
OPERATING REVENUES BY SOURCE
LAST TEN FISCAL YEARS**

Fiscal Year	Taxes	Intergovernmental Revenues	Licenses & Permits	Fines, Forfeits & Penalties	Public Charges For Services	Intergovernmental Charges For Services	Miscellaneous	Total
2003 Actual	\$135,877,590	\$164,653,527	\$1,748,159	\$2,201,876	\$39,429,577	\$20,632,462	\$15,991,971	\$380,535,162
2004 Actual	\$143,089,242	\$186,807,528	\$934,402	\$1,501,055	\$42,092,591	\$20,098,003	\$7,053,057	\$401,575,878
2005 Actual	\$146,018,109	\$183,121,488	\$2,126,627	\$1,503,912	\$44,151,238	\$24,167,358	\$8,412,565	\$409,501,297
2006 Actual	\$152,413,028	\$179,445,465	\$2,035,572	\$1,688,358	\$47,084,647	\$23,284,160	\$12,327,847	\$418,279,077
2007 Actual	\$157,752,877	\$180,140,406	\$2,206,461	\$1,692,128	\$47,414,657	\$28,307,189	\$13,942,242	\$431,455,960
2008 Actual	\$163,365,445	\$184,021,741	\$1,055,297	\$1,740,753	\$49,092,187	\$28,442,870	\$12,604,309	\$440,322,602
2009 Actual	\$164,720,709	\$193,934,710	\$1,089,918	\$1,826,952	\$47,918,796	\$27,232,318	\$5,649,650	\$442,373,053
2010 Actual	\$176,569,804	\$200,736,094	\$1,110,340	\$1,596,423	\$51,419,450	\$28,321,752	\$5,632,166	\$465,386,029
2011 Projected	\$181,782,248	\$217,044,599	\$1,107,496	\$1,672,705	\$57,947,208	\$31,109,285	\$4,962,835	\$495,626,376
2012 Budget	\$188,001,082	\$195,326,346	\$1,697,999	\$2,037,000	\$53,993,314	\$28,994,490	\$4,885,706	\$474,935,937

Operating Revenues by Source



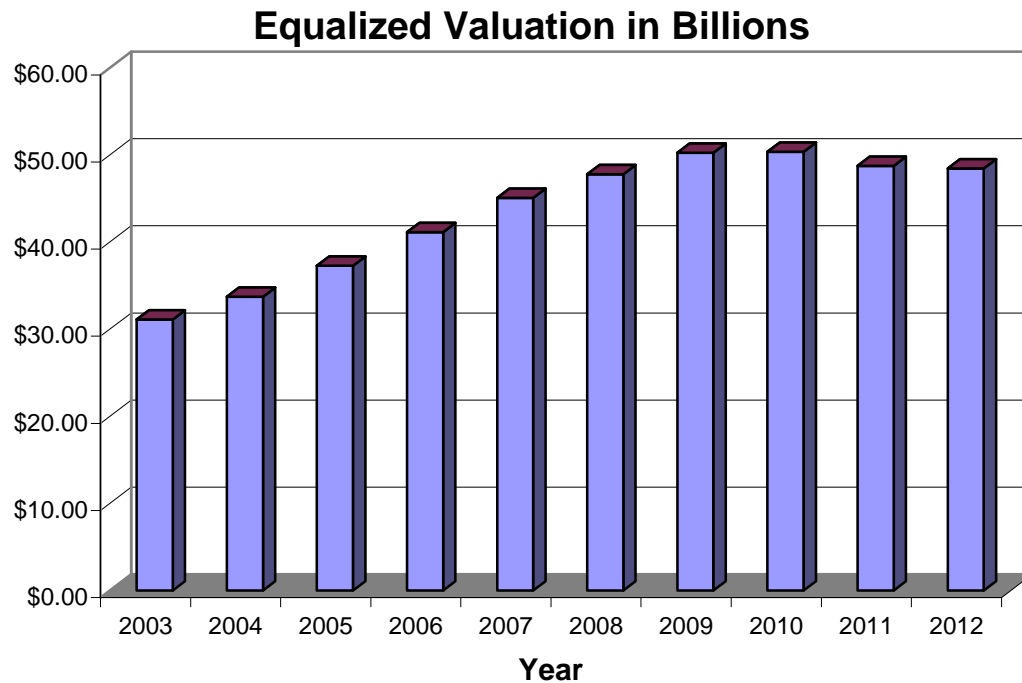
**Dane County
Equalized Valuation (A)**

District	2010		2011	
	Rec. Value All Property	Ratio	Rec. Value All Property	Ratio
Towns				
Albion	\$217,051,500	0.00445	\$206,532,800	0.00426
Berry	\$183,068,000	0.00375	\$181,006,800	0.00374
Black Earth	\$72,052,200	0.00148	\$70,877,200	0.00146
Blooming Grove	\$186,557,200	0.00383	\$180,130,600	0.00372
Blue Mounds	\$126,097,000	0.00259	\$123,448,400	0.00255
Bristol	\$387,528,800	0.00795	\$394,130,600	0.00813
Burke	\$436,411,000	0.00895	\$437,105,700	0.00902
Christiana	\$126,666,400	0.00260	\$125,956,300	0.00260
Cottage Grove	\$382,615,000	0.00785	\$383,620,900	0.00792
Cross Plains	\$254,867,300	0.00523	\$233,551,900	0.00482
Dane	\$114,051,300	0.00234	\$113,840,200	0.00235
Deerfield	\$187,855,400	0.00385	\$170,174,300	0.00351
Dunkirk	\$185,210,000	0.00380	\$190,587,700	0.00393
Dunn	\$703,716,000	0.01443	\$703,029,800	0.01451
Madison	\$378,301,400	0.00776	\$378,998,500	0.00782
Mazomanie	\$112,533,300	0.00231	\$114,295,300	0.00236
Medina	\$141,355,600	0.00290	\$137,645,800	0.00284
Middleton	\$1,018,020,500	0.02088	\$1,015,601,600	0.02096
Montrose	\$124,365,400	0.00255	\$120,599,900	0.00249
Oregon	\$367,544,900	0.00754	\$367,145,600	0.00758
Perry	\$80,503,100	0.00165	\$77,662,700	0.00160
Pleasant Springs	\$461,173,000	0.00946	\$462,954,100	0.00955
Primrose	\$83,533,200	0.00171	\$81,646,600	0.00169
Roxbury	\$199,556,300	0.00409	\$201,086,700	0.00415
Rutland	\$244,869,000	0.00502	\$244,916,200	0.00505
Springdale	\$295,697,600	0.00606	\$296,985,200	0.00613
Springfield	\$362,076,500	0.00743	\$371,868,400	0.00767
Sun Prairie	\$257,178,300	0.00527	\$258,917,100	0.00534
Vermont	\$135,075,100	0.00277	\$130,532,600	0.00269
Verona	\$288,436,100	0.00592	\$286,628,100	0.00592
Vienna	\$195,928,000	0.00402	\$208,897,500	0.00431
Westport	\$724,520,800	0.01486	\$717,109,700	0.01480
Windsor	\$586,725,400	0.01203	\$578,386,500	0.01194
York	\$80,717,600	0.00166	\$77,533,900	0.00160
Total for Towns	\$9,701,858,200	0.19899	\$9,643,405,200	0.19902

District	2010		2011	
	Rec. Value All Property	Ratio	Rec. Value All Property	Ratio
Villages				
Belleville	\$155,031,200	0.00318	\$152,231,100	0.00314
Black Earth	\$99,188,400	0.00203	\$97,569,500	0.00201
Blue Mounds	\$41,499,500	0.00085	\$44,175,000	0.00091
Brooklyn	\$64,121,300	0.00132	\$60,884,000	0.00126
Cambridge	\$131,743,000	0.00270	\$135,226,400	0.00279
Cottage Grove	\$534,367,700	0.01096	\$543,965,900	0.01123
Cross Plains	\$326,804,400	0.00670	\$323,663,100	0.00668
Dane	\$76,910,300	0.00158	\$77,545,200	0.00160
Deerfield	\$169,827,200	0.00348	\$167,320,700	0.00345
DeForest	\$769,790,000	0.01579	\$752,366,200	0.01553
Maple Bluff	\$368,887,600	0.00757	\$376,975,200	0.00778
Marshall	\$174,537,700	0.00358	\$178,324,200	0.00368
Mazomanie	\$136,377,950	0.00280	\$134,706,050	0.00278
McFarland	\$749,115,500	0.01536	\$757,789,100	0.01564
Mount Horeb	\$587,917,100	0.01206	\$586,469,600	0.01210
Oregon	\$837,102,100	0.01717	\$830,694,900	0.01714
Rockdale	\$15,588,300	0.00032	\$15,326,900	0.00032
Shorewood Hills	\$496,623,900	0.01019	\$489,863,100	0.01011
Waunakee	\$1,264,779,200	0.02594	\$1,288,139,000	0.02658
Total for Villages	\$7,000,212,350	0.14358	\$7,013,235,150	0.14474
Cities				
Edgerton	\$6,666,400	0.00014	\$6,354,900	0.00013
Fitchburg	\$2,401,312,900	0.04925	\$2,364,681,500	0.04880
Madison	\$21,755,821,900	0.44620	\$21,582,533,300	0.44542
Middleton	\$2,286,311,100	0.04689	\$2,384,619,400	0.04921
Monona	\$1,049,694,400	0.02153	\$930,423,800	0.01920
Stoughton	\$960,618,200	0.01970	\$937,034,900	0.01934
Sun Prairie	\$2,370,690,200	0.04862	\$2,352,535,500	0.04855
Verona	\$1,222,789,100	0.02508	\$1,239,193,300	0.02557
Total for Cities	\$32,053,904,200	0.65744	\$31,797,376,600	0.65624
Total for County	\$48,755,974,750	1.00000	\$48,454,016,950	1.00000
(A) Due to the varying assessment policies of the sixty municipalities of the County, the County uses the equalized value of the taxable property for tax levy purposes. The equalized value is prepared by the Wisconsin Department of Revenue, Division of State & Local Finance, Bureau of Equalization.				

COUNTY OF DANE
EQUALIZED VALUE OF TAXABLE PROPERTY (A)
LAST TEN BUDGET YEARS

Budget Year	Taxable Property Equalized Value
2003	\$31,108,023,850
2004	\$33,724,492,950
2005	\$37,293,118,150
2006	\$41,164,743,450
2007	\$45,074,674,300
2008	\$47,806,288,650
2009	\$50,256,371,350
2010	\$50,383,375,250
2011	\$48,755,974,750
2012	\$48,454,016,950



(A) Due to the varying assessment policies of the 61 municipalities of the County, the county uses the equalized value of taxable property for tax levy purposes. The equalized value is prepared by the Wisconsin Department of Revenue, Bureau of Property Tax. These values do not include Tax Incremental Districts (TID) which are not included in the taxable property value upon which county taxes are levied.

COUNTY OF DANE
EQUALIZED VALUE OF ALL PROPERTY BY ASSESSMENT CLASS (A)
LAST TEN BUDGET YEARS

Budget Year	Residential Equalized Value	Commercial Equalized Value	Manufacturing Equalized Value	Agricultural Equalized Value	Undeveloped Equalized Value	Forest Equalized Value	Other Equalized Value	Personal Property Equalized Value	Total Equalized Value
2003	\$21,526,246,400	\$8,043,832,600	\$656,459,500	129,621,100	\$30,892,600	\$107,554,000	\$516,440,900	\$1,039,072,600	\$32,050,119,700
2004	\$23,841,039,000	\$8,360,234,000	\$682,130,100	94,981,700	\$38,760,200	\$125,151,800	\$559,859,000	\$994,669,300	\$34,696,825,100
2005	\$26,798,679,100	\$9,117,355,300	\$698,851,700	94,210,800	\$44,177,400	\$143,231,900	\$600,254,000	\$1,041,926,400	\$38,538,686,600
2006	\$30,052,648,400	\$9,963,945,100	\$754,229,500	93,869,600	\$49,904,700	\$139,778,400	\$651,207,800	\$1,094,145,000	\$42,799,728,500
2007	\$33,449,959,100	\$10,740,215,000	\$785,481,500	100,047,500	\$52,822,800	\$148,644,400	\$676,077,400	\$1,133,180,800	\$47,086,428,500
2008	\$35,243,614,000	\$11,775,576,600	\$815,201,200	112,251,500	\$180,244,300	\$57,003,300	\$716,872,200	\$1,213,434,700	\$50,114,197,800
2009	\$36,359,289,400	\$12,176,850,400	\$841,118,500	109,871,700	\$176,189,100	\$61,647,300	\$776,660,600	\$1,332,339,700	\$51,833,966,700
2010	\$36,214,843,800	\$12,668,895,200	\$842,643,300	110,251,100	\$192,049,200	\$61,478,000	\$779,151,900	\$1,374,453,900	\$52,243,766,400
2011	\$34,456,961,800	\$12,936,007,500	\$837,959,700	108,787,600	\$183,728,900	\$54,948,400	\$726,627,900	\$1,356,214,700	\$50,661,236,500
2012	\$34,656,040,600	\$12,375,025,600	\$842,096,100	106,502,600	\$167,841,600	\$51,009,000	\$717,863,300	\$1,279,571,300	\$50,195,950,100

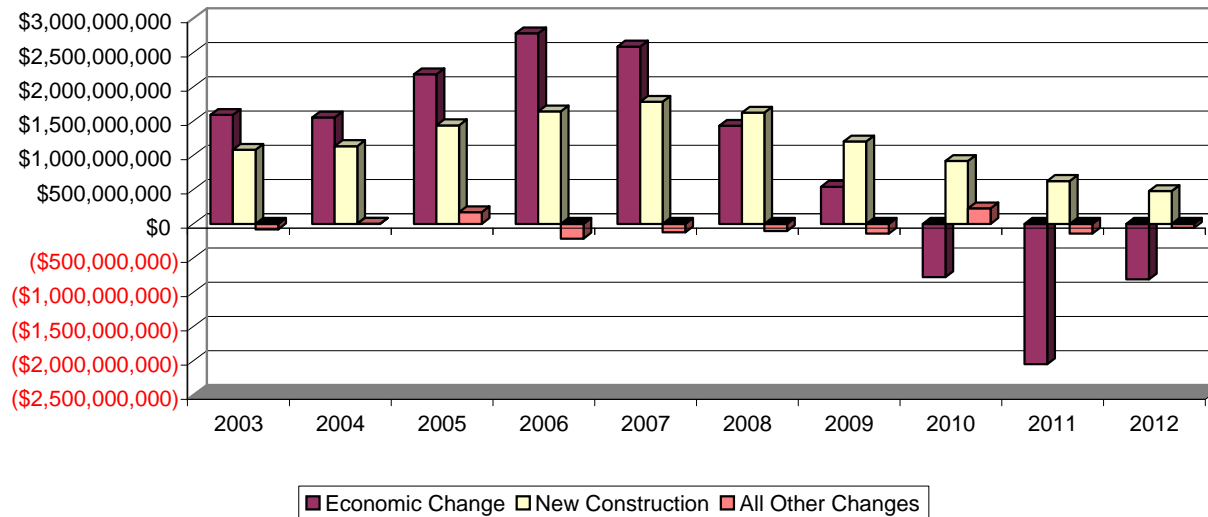
(A) The equalized value is prepared by the Wisconsin Department of Revenue, Bureau of Property Tax. These values include Tax Incremental Districts (TID) which are not included in the taxable property value upon which county taxes are levied.

COUNTY OF DANE

CHANGES IN EQUALIZED VALUATION OF REAL ESTATE PROPERTY (A)

LAST 10 BUDGET YEARS

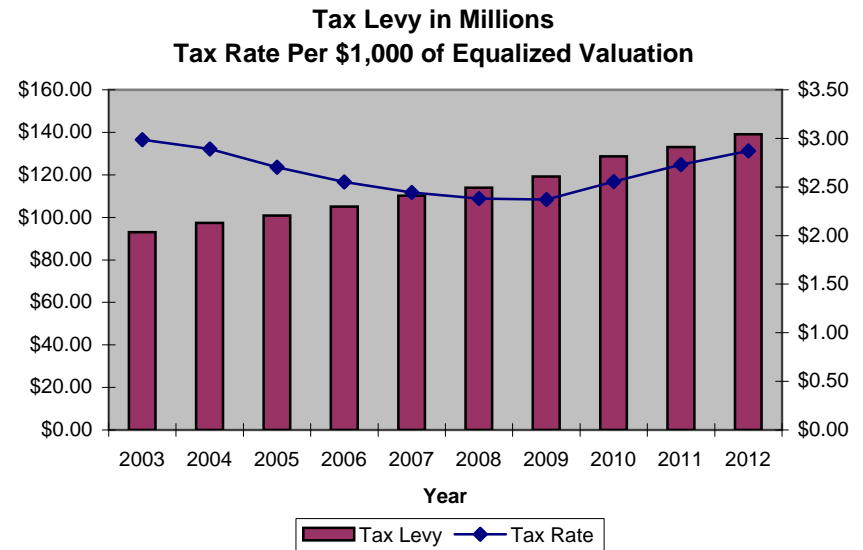
Budget Year	Prior Year Real Estate Valuation	Economic Change	New Construction	All Other Changes	Total Real Estate Valuation
2003	\$28,414,033,100	\$1,592,583,300	\$1,083,246,300	(\$78,815,600)	\$31,011,047,100
2004	\$31,011,047,100	\$1,553,475,800	\$1,136,241,700	\$1,391,200	\$33,702,155,800
2005	\$33,702,155,800	\$2,183,445,200	\$1,439,941,900	\$171,217,300	\$37,496,760,200
2006	\$37,496,760,200	\$2,782,090,900	\$1,641,971,100	(\$215,238,700)	\$41,705,583,500
2007	\$41,705,583,500	\$2,589,550,700	\$1,781,394,800	(\$123,281,300)	\$45,953,247,700
2008	\$45,953,247,700	\$1,431,152,900	\$1,622,534,900	(\$106,172,400)	\$48,900,763,100
2009	\$48,900,763,100	\$542,164,700	\$1,201,829,400	(\$143,130,200)	\$50,501,627,000
2010	\$50,501,627,000	(\$776,619,700)	\$917,233,400	\$227,071,800	\$50,869,312,500
2011	\$50,869,312,500	(\$2,049,236,800)	\$626,677,600	(\$141,731,500)	\$49,305,021,800
2012	\$49,305,021,800	(\$811,096,000)	\$480,047,800	(\$57,594,800)	\$48,916,378,800



(A) The equalized value is prepared by the Wisconsin Department of Revenue, Bureau of Property Tax. These values include Tax Incremental Districts (TID) which are not included in the taxable property value upon which county taxes are levied.

COUNTY OF DANE
PROPERTY TAX RATES
LAST TEN BUDGET YEARS

Budget Year	Tax Levy	Rate per \$1,000 of Equalized Value
2003	\$92,948,455	\$2.99
2004	\$97,456,418	\$2.89
2005	\$100,857,453	\$2.70
2006	\$105,045,958	\$2.55
2007	\$110,172,695	\$2.44
2008	\$113,877,907	\$2.38
2009	\$119,150,454	\$2.37
2010	\$128,720,640	\$2.55
2011	\$133,068,833	\$2.73
2012	\$139,057,624	\$2.87



NOTE: The above property tax rates are the county-wide average rates, based on equalized valuations for the County as a whole not including Tax Incremental Districts (TID).

COUNTY OF DANE

COUNTY TAXES

LAST TEN BUDGET YEARS

Budget Year	Property Tax Levy	Rate per \$1,000 of Equalized Value (A)	County Sales Tax (B)	Total County Taxes
2003	\$92,948,455	\$2.99	\$39,553,300	\$132,501,755
2004	\$97,456,418	\$2.89	\$39,687,000	\$137,143,418
2005	\$100,857,453	\$2.70	\$42,548,000	\$143,405,453
2006	\$105,045,958	\$2.55	\$42,867,110	\$147,913,068
2007	\$110,172,695	\$2.44	\$42,992,110	\$153,164,805
2008	\$113,877,907	\$2.38	\$44,658,854	\$158,536,761
2009	\$119,150,454	\$2.37	\$45,105,443	\$164,255,897
2010	\$128,720,640	\$2.55	\$40,143,843	\$168,864,483
2011	\$133,068,833	\$2.73	\$40,545,275	\$173,614,108
2012	\$139,057,624	\$2.87	\$42,611,858	\$181,669,482

(A) The above property tax rates are the county-wide average rates, based on equalized valuations for the County as a whole, not including Tax Incremental Districts (TID).

(B) The County enacted a 0.5% Sales Tax Rate effective April 1, 1991.

**DANE COUNTY SALES AND USE TAX COLLECTIONS BY NAICS CODE
(Calendar Year Basis)**

NAICS	DESCRIPTION	2008	2009	2010
11	Agricultural, Forestry, Hunting, & Fishing	\$40,250	\$90,648	\$67,837
21	Mining, Quarrying, and Oil and Gas Extraction	\$29,237	\$24,061	\$22,245
22	Utilities	\$1,943,704	\$1,813,568	\$1,923,806
23	Construction	\$1,218,532	\$1,151,649	\$1,040,940
31-33	Manufacturing	\$1,664,189	\$1,261,847	\$1,276,882
42	Wholesale Trade	\$3,617,374	\$3,210,075	\$3,629,529
44-45	Retail Trade	\$19,719,388	\$18,628,749	\$18,804,314
48-49	Transportation and Warehousing	\$95,877	\$74,515	\$50,830
51	Information	\$3,278,952	\$3,292,225	\$3,401,916
52	Finance and Insurance	\$286,449	\$263,982	\$258,403
53	Real Estate and Rental and Leasing	\$1,017,255	\$936,123	\$975,802
54	Professional, Scientific, and Technical Services	\$1,657,875	\$1,546,350	\$1,417,102
55	Management of Companies and Enterprises	\$58,426	\$83,393	\$68,753
56	Administrative and Support and Waste Management and Remediation Services	\$569,762	\$466,504	\$514,282
61	Educational Services	\$458,009	\$471,804	\$485,687
62	Health Care and Social Assistance	\$108,492	\$104,667	\$106,278
71	Arts, Entertainment, and Recreation	\$321,131	\$302,248	\$319,572
72	Accommodation and Food Services	\$4,558,966	\$4,322,637	\$4,459,930
81	Other Services (Except Public Administration)	\$1,698,468	\$1,574,170	\$1,618,278
92	Public Administration	\$307,894	\$256,126	\$324,023
99	Not Reported	\$130,524	\$152,080	\$290,794
	TOTAL	\$42,781,393	\$40,027,421	\$41,057,203

Source: Wisconsin Department of Revenue

**COUNTY OF DANE
DEMOGRAPHIC STATISTICS
LAST TEN FISCAL YEARS**

Fiscal Year	Population (1)	Per Capita Personal Income (3)	School Enrollment (5)	Unemployment Rate (6)
2002	438,881	\$36,388	70,947	3.4%
2003	445,253	\$37,391	71,516	3.6%
2004	450,730	\$38,801	71,222	3.2%
2005	458,297	\$40,279	72,829	3.2%
2006	464,513	\$42,998	74,151	3.2%
2007	468,514	\$44,177	73,988	3.4%
2008	471,559	\$45,052	74,076	3.4%
2009	473,622	\$43,824	75,003	5.9%
2010	488,073 (2)	(4)	76,707	5.6%
2011	489,331	(4)	(4)	(4)

(1) Estimates prepared annually by the Wisconsin Department of Administration, Demographic Services Center.

(2) Official 2010 United States Census.

(3) United States Department of Commerce, Bureau of Economic Analysis.

(4) Information Not Available at this time.

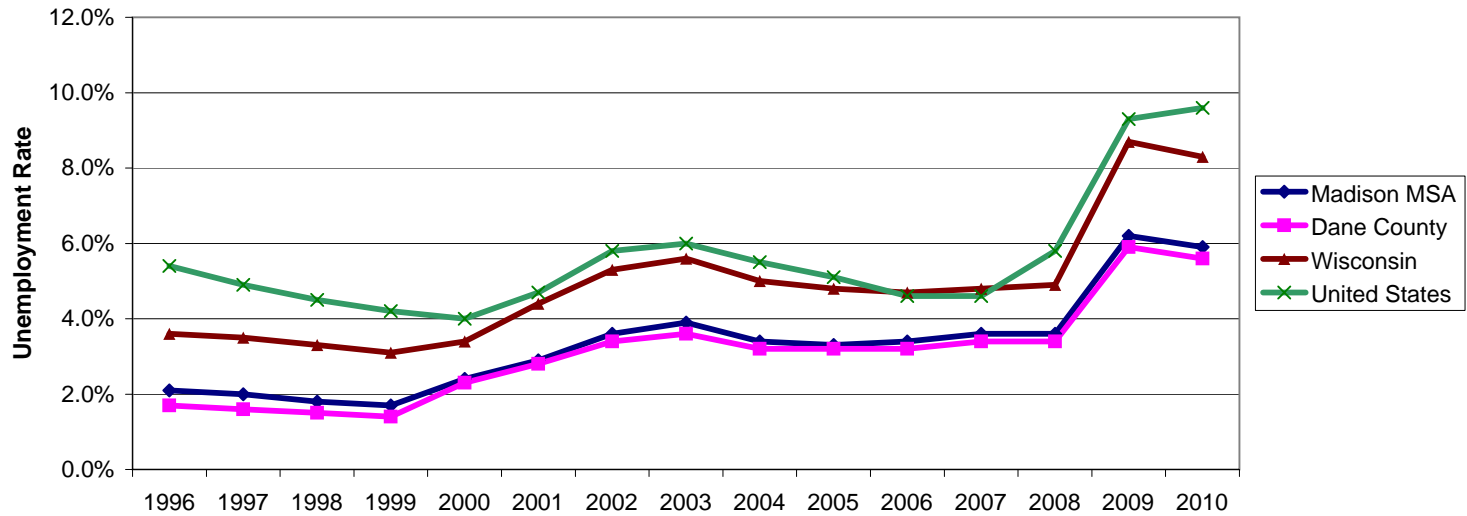
(5) Wisconsin Department of Public Instruction, Fall Registration - Public and Private Schools.

(6) Wisconsin Department of Workforce Development Local Area Unemployment Historical Series, Not Seasonally Adjusted.

Annual Unemployment Statistics Not Seasonally Adjusted

Year	Madison MSA				Dane County			
	Labor Force	Employed	Unemployed	Unemployment Rate	Labor Force	Employed	Unemployed	Unemployment Rate
1996	297,847	291,537	6,310	2.1%	257,075	252,698	4,377	1.7%
1997	302,116	296,097	6,019	2.0%	261,002	256,762	4,240	1.6%
1998	304,575	299,006	5,569	1.8%	263,110	259,169	3,941	1.5%
1999	306,503	301,415	5,088	1.7%	265,760	262,101	3,659	1.4%
2000	310,071	302,506	7,565	2.4%	266,439	260,322	6,117	2.3%
2001	318,972	309,609	9,363	2.9%	274,174	266,623	7,551	2.8%
2002	321,858	310,348	11,510	3.6%	277,013	267,647	9,366	3.4%
2003	323,813	311,309	12,504	3.9%	278,751	268,579	10,172	3.6%
2004	327,246	316,085	11,161	3.4%	281,894	272,772	9,122	3.2%
2005	332,979	321,840	11,139	3.3%	286,918	277,809	9,109	3.2%
2006	336,708	315,188	11,520	3.4%	290,457	281,043	9,414	3.2%
2007	339,389	327,284	12,105	3.6%	294,013	284,074	9,939	3.4%
2008	340,438	328,104	12,334	3.6%	295,376	285,265	10,111	3.4%
2009	343,902	322,557	21,345	6.2%	298,765	281,151	17,614	5.9%
2010	344,323	323,882	20,441	5.9%	299,149	282,306	16,843	5.6%

Source: United States Department of Labor, Bureau of Labor Statistics



Dane County Population Projections by Age & Sex: 2000 - 2030

Age Group	Total						
	2000 Census	2005	2010	2015	2020	2025	2030
0-4	25,818	28,052	29,464	32,104	34,555	36,682	38,599
5-9	26,693	26,712	28,600	29,860	32,616	35,162	37,135
10-14	27,733	28,626	28,023	29,922	31,353	34,288	36,793
15-19	32,912	33,426	34,201	32,864	35,067	37,135	40,195
20-24	43,986	47,852	48,801	48,696	46,637	49,279	51,119
25-29	34,472	36,427	39,148	39,763	39,854	38,242	40,233
30-34	33,914	32,482	33,952	36,369	37,088	37,241	35,593
35-39	35,449	33,480	31,737	33,071	35,561	36,333	36,349
40-44	34,659	35,430	33,129	31,314	32,763	35,298	35,935
45-49	33,191	34,651	35,078	32,710	31,051	32,558	34,953
50-54	27,029	32,758	33,874	34,205	32,041	30,491	31,868
55-59	18,225	26,054	31,286	32,278	32,751	30,764	29,195
60-64	12,576	17,232	24,426	29,286	30,382	30,930	28,988
65-69	10,524	11,526	15,659	22,173	26,758	27,868	28,325
70-74	9,687	9,653	10,509	14,280	20,370	24,714	25,727
75-79	8,361	8,440	8,386	9,158	12,552	18,008	21,897
80-84	5,894	6,744	6,819	6,810	7,537	10,405	14,985
85-89	3,522	4,033	4,644	4,760	4,835	5,430	7,556
90-94	1,411	1,735	2,041	2,402	2,536	2,639	3,019
95-99	404	527	679	830	1,015	1,114	1,198
100 & Over	66	87	117	162	212	267	314
Totals	426,526	455,927	480,573	503,017	527,534	554,848	579,976

Components of Population Change by Five Year Time Periods

Component	2000-2005	2005-2010	2010-2015	2015-2020	2020-2025	2025-2030
County Births	27,685	29,425	32,131	34,483	36,568	38,561
County Deaths	13,170	14,224	15,400	16,756	18,556	20,806
Natural Increase	14,515	15,201	16,731	17,727	18,012	17,755
County Net Migration	14,886	9,445	5,713	6,790	9,302	7,373
Total Change	29,401	24,646	22,444	24,517	27,314	25,128

Source: Final Population Projections for Wisconsin Counties by Age & Sex: 2000 - 2030 prepared by the Demographic Services Center, Wisconsin Department of Administration, January 2004.

Dane County Population Projections by Age & Sex: 2000 - 2030

Males							
Age Group	2000 Census	2005	2010	2015	2020	2025	2030
0-4	13,106	14,335	15,060	16,409	17,663	18,752	19,735
5-9	13,630	13,558	14,612	15,259	16,662	17,964	18,978
10-14	14,268	14,598	14,206	15,264	15,997	17,489	18,771
15-19	16,626	16,747	17,019	16,298	17,529	18,607	20,164
20-24	22,205	24,368	24,661	24,448	23,279	24,786	25,749
25-29	17,833	18,889	20,476	20,656	20,579	19,647	20,840
30-34	17,384	16,848	17,650	19,078	19,329	19,303	18,367
35-39	17,678	17,098	16,399	17,134	18,598	18,888	18,804
40-44	17,270	17,665	16,914	16,183	16,983	18,479	18,710
45-49	16,339	17,226	17,451	16,674	16,030	16,869	18,300
50-54	13,394	16,127	16,845	17,034	16,359	15,776	16,558
55-59	8,943	12,846	15,333	15,992	16,260	15,672	15,082
60-64	6,098	8,394	11,966	14,274	14,983	15,299	14,724
65-69	4,889	5,421	7,409	10,567	12,698	13,399	13,674
70-74	4,270	4,355	4,808	6,583	9,472	11,456	12,097
75-79	3,484	3,494	3,564	3,959	5,483	7,959	9,660
80-84	2,129	2,605	2,627	2,709	3,061	4,278	6,249
85-89	1,035	1,247	1,557	1,600	1,689	1,945	2,745
90-94	355	450	566	727	774	842	989
95-99	78	121	163	214	288	321	360
100 & Over	6	15	24	38	54	68	82
Totals	211,020	226,407	239,310	251,100	263,770	277,799	290,638

Source: Final Population Projections for Wisconsin Counties by Age & Sex: 2000 - 2030 prepared by the Demographic Services Center, Wisconsin Department of Administration, January 2004.

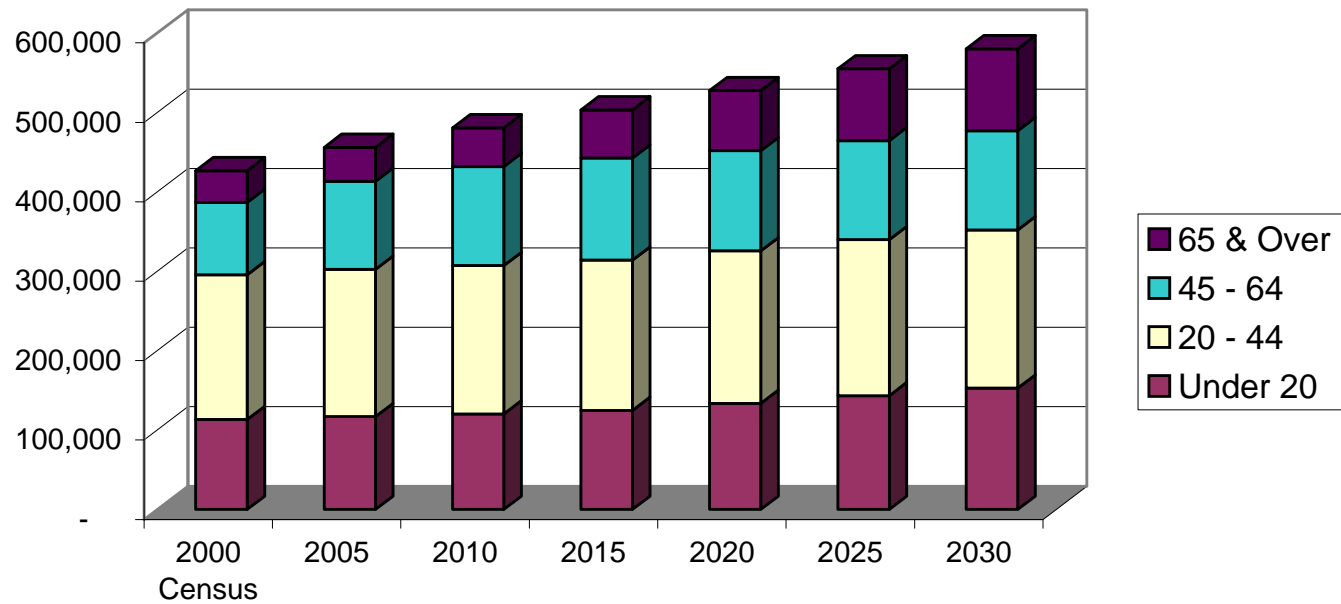
Dane County Population Projections by Age & Sex: 2000 - 2030

Females							
Age Group	2000 Census	2005	2010	2015	2020	2025	2030
0-4	12,712	13,717	14,404	15,695	16,892	17,930	18,864
5-9	13,063	13,154	13,988	14,601	15,954	17,198	18,157
10-14	13,465	14,028	13,817	14,658	15,356	16,799	18,022
15-19	16,286	16,679	17,182	16,566	17,538	18,528	20,031
20-24	21,781	23,484	24,140	24,248	23,358	24,493	25,370
25-29	16,639	17,538	18,672	19,107	19,275	18,595	19,393
30-34	16,530	15,634	16,302	17,291	17,759	17,938	17,226
35-39	17,771	16,382	15,338	15,937	16,963	17,445	17,545
40-44	17,389	17,765	16,215	15,131	15,780	16,819	17,225
45-49	16,852	17,425	17,627	16,036	15,021	15,689	16,653
50-54	13,635	16,631	17,029	17,171	15,682	14,715	15,310
55-59	9,282	13,208	15,953	16,286	16,491	15,092	14,113
60-64	6,478	8,838	12,460	15,012	15,399	15,631	14,264
65-69	5,635	6,105	8,250	11,606	14,060	14,469	14,651
70-74	5,417	5,298	5,701	7,697	10,898	13,258	13,630
75-79	4,877	4,946	4,822	5,199	7,069	10,049	12,237
80-84	3,765	4,139	4,192	4,101	4,476	6,127	8,736
85-89	2,487	2,786	3,087	3,160	3,146	3,485	4,811
90-94	1,056	1,285	1,475	1,675	1,762	1,797	2,030
95-99	326	406	516	616	727	793	838
100 & Over	60	72	93	124	158	199	232
Totals	215,506	229,520	241,263	251,917	263,764	277,049	289,338

Source: Final Population Projections for Wisconsin Counties by Age & Sex: 2000 - 2030 prepared by the Demographic Services Center, Wisconsin Department of Administration, January 2004.

Dane County Population Projections by Age & Sex: 2000 - 2030

Age Group	2000 Census	2005	2010	2015	2020	2025	2030
Under 20	113,156	116,816	120,288	124,750	133,591	143,267	152,722
20 - 44	182,480	185,671	186,767	189,213	191,903	196,393	199,229
45 - 64	91,021	110,695	124,664	128,479	126,225	124,743	125,004
65 & Over	39,869	42,745	48,854	60,575	75,815	90,445	103,021



Source: Final Population Projections for Wisconsin Counties by Age & Sex: 2000 - 2030 prepared by the Demographic Services Center, Wisconsin Department of Administration, January 2004.

**COUNTY OF DANE
LARGEST EMPLOYERS**

Employer	Type of Organization	Employees ¹
State of Wisconsin	State Government	47,237
UW Hospital & Clinics Authority	Hospital Health Care	7,253
Madison Metropolitan School District	Education	3,837
United States Government	Federal Government	3,800
Oscar Mayer Foods Corporation	Food Packaging	3,500
UW Medical Foundation	Health Care, Clinics, Insurance	3,448
WPS Insurance Corporation	Health benefits, insurance and administration	3,219
Epic Systems	Software Services	3,168
Dane County	County Government	3,048
American Family Mutual Insurance	Insurance	3,034

¹ 2010

² Source: Greater Madison Area Chamber of Commerce and telephone contacts and D&B Database

**COUNTY OF DANE
PRINCIPAL TAXPAYERS
BUDGET YEAR 2012**

<u>Taxpayer</u>	<u>Type of Business</u>	<u>2011 Equalized Assessed Value</u>	<u>Percentage Of Total Equalized Assessed Valuation</u>
Epic Systems	Medical Software	\$383,966,414	0.79%
Madison Joint Venture	Shopping Centers	\$189,792,443	0.39%
American Family Insurance	Insurance	\$146,848,966	0.30%
University Research Park, Inc.	Research & Technology Park	\$120,718,607	0.25%
Greenway Office Center	Property Management	\$114,679,944	0.24%
Covance Laboratories	Research	\$81,053,060	0.17%
SBA Usquare LLC	Property Management	\$50,595,784	0.10%
Pinckney Investment Group	Property Management	\$44,927,182	0.09%
Hilldale Land Company, LLC	Property Management	\$42,890,926	0.09%
Wingra Building Group	Property Management	\$40,564,460	0.08%
Totals		<u>\$1,216,037,786</u>	<u>2.51%</u>

COUNTY OF DANE
COMPUTATION OF LEGAL DEBT MARGIN
12/31/2011 (Estimated)

CHAPTER 67, SECTION 03 OF THE WISCONSIN STATE STATUTES STATES:

"The aggregate amount of indebtedness, including existing indebtedness, of any municipality shall not exceed 5% of the value of the taxable property located therein as equalized for state purposes."

Equalized value of real and personal property including TID values (1)		<u>\$50,195,950,100</u>
Debt limit - 5% of equalized value		\$2,509,797,505
Amount of Debt applicable to debt limit:		
General obligation debt (2)	\$240,025,000	
Less:		
Asset amount in Debt Service Fund available for payment of principal		
Net amount in Debt Service Fund available for payment of principal	<u>\$758,692</u>	
Net amount of debt applicable to debt limit		<u>\$239,266,308</u>
Legal debt margin		<u>\$2,270,531,197</u>

(1) The "Equalized value of real and personal property including TID values" is the sum of the Equalized values plus the values of the tax incremental districts, which valuation is used for purposes of levying the property tax for state forestry tax purposes.

(2) General obligation debt is defined to be the total County indebtedness for all funds.

Sub. 1 to Res. 143, 2011-2012**SETTING THE 2011 TAX LEVY**

The County Board of Supervisors may, according to law, levy certain taxes each year as follows:

<u>Tax Levy</u>	<u>Levied to</u>
State Tax	Entire County
County Taxes	
State Special Charges	Entire County
Bridge Aid	All Towns and the City of Monona
Highway	Entire County
County Library	All towns; the Villages of Blue Mounds, Brooklyn, Cottage Grove, Dane, Maple Bluff, Rockdale, Shorewood Hills.
Board of Health	Entire County except the City of Madison

NOW, THEREFORE, BE IT RESOLVED that the State Taxes in conformity thereto, be levied in the amount of \$8,518,560.26 for State Forestation Tax on the taxable property of Dane County as provided in Section 70.58 f the Wisconsin Statutes.

BE IT FURTHER RESOLVED that County Taxes in conformity thereto:

1. \$150,990 be levied for County Bridge Aid on the taxable property of Dane County, exclusive of all villages and cities in the County which have never received County Bridge Aid except as otherwise provided in Sections 81.38 of the Wisconsin Statutes.
2. \$4,008,382 be levied for a County Library Tax on the taxable property of Dane County, exclusive of those towns, villages or cities which have filed a written application for exemption from a County Library Tax as provided in Section 43.64 of the Wisconsin Statutes.
3. \$5,102,425 be levied for a County Board of Health on the taxable property of Dane County exclusive of those towns, villages and cities having a full-time Health Department as provided in Section 140.09(11) of the Wisconsin Statutes.
4. Taxes be levied on the taxable property of Dane County as follows:
 - A. \$ -20,472 for State Special Charges
 - B. \$ 6,161,400 for Highway
 - C. \$123,654,899 County Taxes

Summary:

Gross County Taxes	\$ 182,963,341
Gross Tax Rate Per \$1,000	\$ 3.78
County Sales Tax Applied	\$ 42,611,858
Net Proposed County Property Taxes	\$ 140,351,483
State Aid – Exempt Computers	\$ 1,93,859
Net Required County Property Taxes	\$ 139,057,624
Net Tax Rate Per \$1,000	\$ 2.87

DANE COUNTY
2012 Budget
Tax Apportionment

MUNICIPALITY	OTHER CHARGES	CHARITABLE & PENAL	BRIDGE AID	COUNTY HIGHWAY	COUNTY LIBRARY	COUNTY HEALTH	ALL OTHER COUNTY TAXES	TOTAL COUNTY TAXES
TOWNS								
Albion	0.00	(87.26)	2,949.20	26,262.66	73,573.77	39,216.97	527,072.76	668,988.10
Berry	0.00	(76.48)	2,584.70	23,016.78	64,480.57	34,370.03	461,930.28	586,305.88
Black Earth	0.00	(29.95)	1,012.10	9,012.73	25,248.79	13,458.34	180,878.98	229,580.99
Blooming Grove	0.00	(76.11)	2,572.19	22,905.36	64,168.44	34,203.65	459,694.21	583,467.74
Blue Mounds	0.00	(52.16)	1,762.79	15,697.67	43,976.37	23,440.69	315,040.95	399,866.31
Bristol	0.00	(166.52)	5,628.03	50,117.54	140,402.26	74,838.51	1,005,823.31	1,276,643.13
Burke	0.00	(184.68)	6,241.69	55,582.25	155,711.41	82,998.73	1,115,495.98	1,415,845.38
Christiana	0.00	(53.22)	1,798.61	16,016.57	44,869.77	23,916.90	321,441.12	407,989.75
Cottage Grove	0.00	(162.08)	5,477.95	48,781.13	136,658.36	72,842.90	979,002.50	1,242,600.76
Cross Plains	0.00	(98.68)	3,335.03	29,698.40	83,198.86	44,347.42	596,025.64	756,506.67
Dane	0.00	(48.10)	1,625.59	14,475.89	40,553.62	21,616.26	290,520.77	368,744.03
Deerfield	0.00	(71.90)	2,430.02	21,639.32	60,621.67	32,313.12	434,285.68	551,217.91
Dunkirk	0.00	(80.52)	2,721.52	24,235.08	67,893.60	36,189.27	486,380.78	617,339.73
Dunn	0.00	(297.04)	10,038.98	89,397.08	250,442.30	133,493.07	1,794,135.64	2,277,210.03
Madison	0.00	(160.13)	5,411.95	48,193.35	135,011.71	71,965.19	967,206.11	1,227,628.18
Mazomanie	0.00	(48.29)	1,632.09	14,533.76	40,715.74	21,702.68	291,682.19	370,218.17
Medina	0.00	(58.16)	1,965.53	17,503.00	49,033.95	26,136.53	351,272.79	445,853.64
Middleton	0.00	(429.10)	14,502.37	129,143.63	361,790.64	192,844.99	2,591,820.48	3,289,673.01
Montrose	0.00	(50.95)	1,722.12	15,335.45	42,961.65	22,899.81	307,771.56	390,639.64
Oregon	0.00	(155.12)	5,242.69	46,686.14	130,789.32	69,714.53	936,957.45	1,189,235.01
Perry	0.00	(32.81)	1,108.99	9,875.57	27,666.00	14,746.79	198,195.61	251,560.15
Pleasant Springs	0.00	(195.60)	6,610.80	58,869.12	164,919.46	87,906.89	1,181,461.23	1,499,571.90
Primrose	0.00	(34.50)	1,165.88	10,382.16	29,085.20	15,503.26	208,362.54	264,464.54
Roxbury	0.00	(84.96)	2,871.44	25,570.13	71,633.69	38,182.85	513,174.29	651,347.44
Rutland	0.00	(103.48)	3,497.30	31,143.48	87,247.19	46,505.30	625,027.39	793,317.18
Springdale	0.00	(125.48)	4,240.83	37,764.56	105,795.88	56,392.30	757,907.75	961,975.84
Springfield	0.00	(157.12)	5,310.13	47,286.69	132,471.74	70,611.31	949,010.06	1,204,532.81
Sun Prairie	0.00	(109.39)	3,697.23	32,923.83	92,234.77	49,163.83	660,757.76	838,668.03
Vermont	0.00	(55.15)	1,863.95	16,598.49	46,500.00	24,785.86	333,119.86	422,813.01
Verona	0.00	(121.10)	4,092.93	36,447.55	102,106.34	54,425.67	731,476.38	928,427.77
Vienna	0.00	(88.26)	2,982.97	26,563.35	74,416.15	39,665.98	533,107.49	676,647.68
Westport	0.00	(302.98)	10,240.04	91,187.48	255,458.03	136,166.60	1,830,067.62	2,322,816.79
Windsor	0.00	(244.37)	8,259.13	73,547.47	206,040.27	109,825.49	1,476,045.31	1,873,473.30
York	0.00	(32.76)	1,107.15	9,859.19	27,620.12	14,722.33	197,866.91	251,142.94
TOTAL TOWNS	0.00	(4,074.41)	137,703.92	1,226,252.86	3,435,297.64	1,831,114.05	24,610,019.38	31,236,313.44

DANE COUNTY
2012 Budget
Tax Apportionment

MUNICIPALITY	OTHER CHARGES	CHARITABLE & PENAL	BRIDGE AID	COUNTY HIGHWAY	COUNTY LIBRARY	COUNTY HEALTH	ALL OTHER COUNTY TAXES	TOTAL COUNTY TAXES
VILLAGES								
Belleville	0.00	(64.32)	0.00	19,357.67	0.00	28,906.02	388,494.55	436,693.92
Black Earth	0.00	(41.22)	0.00	12,406.91	0.00	18,526.74	248,997.86	279,890.29
Blue Mounds	0.00	(18.66)	0.00	5,617.28	15,736.59	8,388.06	112,734.83	142,458.10
Brooklyn	0.00	(25.72)	0.00	7,741.99	21,688.88	11,560.81	155,376.28	196,342.24
Cambridge	0.00	(57.13)	0.00	17,195.35	0.00	25,677.13	345,098.46	387,913.81
Cottage Grove	0.00	(229.83)	0.00	69,170.56	193,778.52	103,289.62	1,388,203.76	1,754,212.63
Cross Plains	0.00	(136.75)	0.00	41,156.91	0.00	61,457.96	825,989.89	928,468.01
Dane	0.00	(32.76)	0.00	9,860.63	27,624.15	14,724.48	197,895.75	250,072.25
Deerfield	0.00	(70.69)	0.00	21,276.46	0.00	31,771.28	427,003.28	479,980.33
DeForest	0.00	(317.88)	0.00	95,670.69	0.00	142,861.19	1,920,042.39	2,158,256.39
Maple Bluff	0.00	(159.28)	0.00	47,936.07	134,290.95	71,581.00	962,042.64	1,215,691.38
Marshall	0.00	(75.34)	0.00	22,675.66	0.00	33,860.65	455,084.27	511,545.24
Mazomanie	0.00	(56.91)	0.00	17,129.19	0.00	25,578.32	343,770.53	386,421.13
McFarland	0.00	(320.17)	0.00	96,360.26	0.00	143,890.90	1,933,881.66	2,173,812.65
Mount Horeb	0.00	(247.79)	0.00	74,575.32	0.00	111,360.32	1,496,673.42	1,682,361.27
Oregon	0.00	(350.98)	0.00	105,630.94	0.00	157,734.44	2,119,937.63	2,382,952.03
Rockdale	0.00	(6.48)	0.00	1,948.96	5,459.95	2,910.31	39,114.33	49,427.07
Shorewood Hills	0.00	(206.97)	0.00	62,290.86	174,505.32	93,016.44	1,250,133.14	1,579,738.79
Waunakee	0.00	(544.25)	0.00	163,799.42	0.00	244,595.08	3,287,337.31	3,695,187.56
TOTAL VILLAGES	0.00	(2,963.13)	0.00	891,801.13	573,084.36	1,331,690.75	17,897,811.98	20,691,425.09
CITIES								
Edgerton	0.00	(2.68)	0.00	808.09	0.00	1,206.68	16,217.74	18,229.83
Fitchburg	0.00	(999.10)	0.00	300,692.28	0.00	449,011.68	6,034,679.28	6,783,384.14
Madison	0.00	(9,118.83)	0.00	2,744,429.24	0.00	0.00	55,078,735.31	57,814,045.72
Middleton	0.00	(1,007.52)	0.00	303,227.57	0.00	452,797.56	6,085,560.90	6,840,578.51
Monona	0.00	(393.11)	13,286.08	118,312.44	0.00	176,671.21	2,374,446.29	2,682,322.91
Stoughton	0.00	(395.90)	0.00	119,153.11	0.00	177,926.55	2,391,317.86	2,688,001.62
Sun Prairie	0.00	(993.97)	0.00	299,147.79	0.00	446,705.37	6,003,682.62	6,748,541.81
Verona	0.00	(523.57)	0.00	157,575.49	0.00	235,301.15	3,162,427.64	3,554,780.71
TOTAL CITIES	0.00	(13,434.68)	13,286.08	4,043,346.01	0.00	1,939,620.20	81,147,067.64	87,129,885.25
TOTALS	0.00	(20,472.22)	150,990.00	6,161,400.00	4,008,382.00	5,102,425.00	123,654,899.00	139,057,623.78

ATTORNEYS' ASSOCIATION SALARY SCHEDULE - "A"

Effective 12/17/11

RANGE	HOURLY RATE	BI-WEEKLY ^K RATE	MONTHLY ^J RATE	ANNUAL ^J RATE
22 (1)	\$27.45	\$2,196.00	\$4,758	\$57,096
23	28.59	2,287.20	4,956	59,467
23.5	29.24	2,339.20	5,068	60,819
24	29.81	2,384.80	5,167	62,005
24.5	30.48	2,438.40	5,283	63,398
25	31.12	2,489.60	5,394	64,730
25.5	31.70	2,536.00	5,495	65,936
26	32.36	2,588.80	5,609	67,309
26.5	33.04	2,643.20	5,727	68,723
27	33.64	2,691.20	5,831	69,971
27.5	34.42	2,753.60	5,966	71,594
28	35.07	2,805.60	6,079	72,946
28.5	35.69	2,855.20	6,186	74,235
29	36.40	2,912.00	6,309	75,712
29.5	37.14	2,971.20	6,438	77,251
30 (2)	37.84	3,027.20	6,559	78,707
30.5	38.57	3,085.60	6,685	80,226
31	39.38	3,150.40	6,826	81,910
31.5	40.15	3,212.00	6,959	83,512
32	40.98	3,278.40	7,103	85,238
32.5	41.73	3,338.40	7,233	86,798
33	42.57	3,405.60	7,379	88,546
33.5	43.46	3,476.80	7,533	90,397
34	44.32	3,545.60	7,682	92,186
34.5	45.20	3,616.00	7,835	94,016
35	46.05	3,684.00	7,982	95,784
35.5	47.10	3,768.00	8,164	97,968
36	48.03	3,842.40	8,325	99,902
36.5	49.08	3,926.40	8,507	102,086
37	50.12	4,009.60	8,687	104,250
37.5	51.24	4,099.20	8,882	106,579
38	52.37	4,189.60	9,077	108,930
38.5	53.53	4,282.40	9,279	111,342
39	54.71	4,376.80	9,483	113,797
39.5	56.07	4,485.60	9,719	116,626
40	57.44	4,595.20	9,956	119,475

Effective 1/1/78 New Employees: 1) **Range 22-40:** Assistant Corporation Counsels start at Range 22. 2) **Range 30-40:** Judicial Court Commissioners start at Range 30. ^J Monthly and Annual rates based on 2,080 hours per year. ^K Biweekly rate based on 80 hours.

UNION LOCAL 65, AFSCME, AFL-CIO SALARY SCHEDULE - "F"
Effective 12/17/11

RANGE (SCALE)	HOURLY RATE	BIWEEKLY	MONTHLY*					ANNUAL RATE
			Step 1*	Step 2*	Step 3*	Step 4*	Step 5*	
06	17.53	1,402.40	\$ 3,039	17.75 \$ 3,077	18.11 \$ 3,139	18.48 \$ 3,203	18.81 \$ 3,260	\$ 36,462
09	18.48	1,478.40	\$ 3,203	18.81 \$ 3,260	19.19 \$ 3,326	19.58 \$ 3,394	20.00 \$ 3,467	\$ 38,438
10	18.81	1,504.80	\$ 3,260	19.19 \$ 3,326	19.58 \$ 3,394	20.00 \$ 3,467	20.39 \$ 3,534	\$ 39,125
11	19.19	1,535.20	\$ 3,326	19.58 \$ 3,394	20.00 \$ 3,467	20.39 \$ 3,534	20.89 \$ 3,621	\$ 39,915
12	19.58	1,566.40	\$ 3,394	20.00 \$ 3,467	20.39 \$ 3,534	20.89 \$ 3,621	21.37 \$ 3,704	\$ 40,726
13	20.00	1,600.00	\$ 3,467	20.39 \$ 3,534	20.89 \$ 3,621	21.37 \$ 3,704	21.89 \$ 3,794	\$ 41,600
14	20.39	1,631.20	\$ 3,534	20.89 \$ 3,621	21.37 \$ 3,704	21.89 \$ 3,794	22.33 \$ 3,871	\$ 42,411
16	21.37	1,709.60	\$ 3,704	21.89 \$ 3,794	22.33 \$ 3,871	22.89 \$ 3,968	23.56 \$ 4,084	\$ 44,450
17	21.89	1,751.20	\$ 3,794	22.33 \$ 3,871	22.89 \$ 3,968	23.56 \$ 4,084	24.18 \$ 4,191	\$ 45,531
18	22.33	1,786.40	\$ 3,871	22.89 \$ 3,968	23.56 \$ 4,084	24.18 \$ 4,191	24.78 \$ 4,295	\$ 46,446
19	22.89	1,831.20	\$ 3,968	23.56 \$ 4,084	24.18 \$ 4,191	24.78 \$ 4,295	25.53 \$ 4,425	\$ 47,611

Biweekly rate based on 80 hours of Step 1. Monthly and Annual rates based on 2,080 hours per year.

JOINT COUNCIL OF UNIONS AFSCME, AFL-CIO SALARY SCHEDULE - "G"
Effective 12/17/11

RANGE (SCALE)	HOURLY RATE	BIWEEKLY	MONTHLY*					ANNUAL RATE STEP 1				
			Step 1*	Step 2*	Step 3*	Step 4*	Step 5*					
03	\$ 14.76	\$ 1,180.80	\$ 2,558	\$ 15.40	\$ 2,669	\$ 16.06	\$ 2,784	\$ 16.68	\$ 2,891	\$ 17.29	\$ 2,997	\$ 30,701
04	16.34	1,307.20	\$ 2,832	16.85	\$ 2,921	17.10	\$ 2,964	17.41	\$ 3,018	17.65	\$ 3,059	\$ 33,987
05	16.59	1,327.20	\$ 2,876	17.10	\$ 2,964	17.41	\$ 3,018	17.65	\$ 3,059	18.07	\$ 3,132	\$ 34,507
06	17.29	1,383.20	\$ 2,997	17.56	\$ 3,044	17.83	\$ 3,091	18.17	\$ 3,149	18.56	\$ 3,217	\$ 35,963
07	17.56	1,404.80	\$ 3,044	17.83	\$ 3,091	18.17	\$ 3,149	18.56	\$ 3,217	18.87	\$ 3,271	\$ 36,525
08	17.83	1,426.40	\$ 3,091	18.17	\$ 3,149	18.56	\$ 3,217	18.87	\$ 3,271	19.25	\$ 3,337	\$ 37,086
09	18.17	1,453.60	\$ 3,149	18.56	\$ 3,217	18.87	\$ 3,271	19.25	\$ 3,337	19.66	\$ 3,408	\$ 37,794
10	18.56	1,484.80	\$ 3,217	18.87	\$ 3,271	19.25	\$ 3,337	19.66	\$ 3,408	20.11	\$ 3,486	\$ 38,605
11	18.87	1,509.60	\$ 3,271	19.25	\$ 3,337	19.66	\$ 3,408	20.11	\$ 3,486	20.53	\$ 3,559	\$ 39,250
12	19.25	1,540.00	\$ 3,337	19.66	\$ 3,408	20.11	\$ 3,486	20.53	\$ 3,559	20.99	\$ 3,638	\$ 40,040
13	19.66	1,572.80	\$ 3,408	20.11	\$ 3,486	20.53	\$ 3,559	20.99	\$ 3,638	21.44	\$ 3,716	\$ 40,893
14	20.11	1,608.80	\$ 3,486	20.53	\$ 3,559	20.99	\$ 3,638	21.44	\$ 3,716	21.94	\$ 3,803	\$ 41,829
14F	20.39	1,631.20	\$ 3,534	20.89	\$ 3,621	21.37	\$ 3,704	21.89	\$ 3,794	22.33	\$ 3,871	\$ 42,411
15	20.53	1,642.40	\$ 3,559	20.99	\$ 3,638	21.44	\$ 3,716	21.94	\$ 3,803	22.43	\$ 3,888	\$ 42,702
16	20.99	1,679.20	\$ 3,638	21.44	\$ 3,716	21.94	\$ 3,803	22.43	\$ 3,888	23.05	\$ 3,995	\$ 43,659
17	21.44	1,715.20	\$ 3,716	21.94	\$ 3,803	22.43	\$ 3,888	23.05	\$ 3,995	23.61	\$ 4,092	\$ 44,595
18	21.94	1,755.20	\$ 3,803	22.43	\$ 3,888	23.05	\$ 3,995	23.61	\$ 4,092	24.30	\$ 4,212	\$ 45,635
19	22.43	1,794.40	\$ 3,888	23.05	\$ 3,995	23.61	\$ 4,092	24.30	\$ 4,212	24.96	\$ 4,326	\$ 46,654
20	23.05	1,844.00	\$ 3,995	23.61	\$ 4,092	24.30	\$ 4,212	24.96	\$ 4,326	25.65	\$ 4,446	\$ 47,944
21	23.61	1,888.80	\$ 4,092	24.30	\$ 4,212	24.96	\$ 4,326	25.65	\$ 4,446	26.46	\$ 4,586	\$ 49,109
22	24.30	1,944.00	\$ 4,212	24.96	\$ 4,326	25.65	\$ 4,446	26.46	\$ 4,586	27.24	\$ 4,722	\$ 50,544

Biweekly rate based on 80 hours of Step 1. Monthly and Annual rates based on 2,080 hours per year.

WPPA DEPUTY SHERIFFS' ASSOCIATION SALARY SCHEDULE - "L"
Effective 12/17/11

RANGE	STEP	HOURLY	BIWEEKLY	MONTHLY	ANNUAL
15	1	\$22.36	\$ 1,670.29	\$3,632	\$43,580
	2	23.21	1,733.79	3,770	45,236
	3	23.80	1,777.86	3,866	46,386
	4	24.52	1,831.64	3,982	47,789
	5	25.11	1,875.72	4,078	48,939
	6	25.89	1,933.98	4,205	50,460
	7	26.60	1,987.02	4,320	51,843
	8	27.60	2,061.72	4,483	53,792
	9	28.66	2,140.90	4,655	55,858
(Step 8 Effective December 19, 1999 after earning 169 longevity credits)					
(Step 9 Effective October 16, 1994 after earning 260 longevity credits)					
16	1	24.71	1,845.84	4,013	48,160
	2	25.36	1,894.39	4,119	49,427
	3	26.03	1,944.44	4,228	50,732
	4	26.70	1,994.49	4,337	52,038
	5	27.46	2,051.26	4,460	53,520
	6	28.48	2,127.46	4,626	55,508
	7	29.58	2,209.63	4,804	57,651
(Step 6 Effective December 19, 1999 after earning 169 longevity credits)					
(Step 7 Effective October 16, 1994 after earning 260 longevity credits)					
17	1	25.53	1,907.09	4,146	49,758
	2	26.17	1,954.90	4,250	51,005
	3	26.84	2,004.95	4,359	52,311
	4	27.60	2,061.72	4,483	53,792
	5	28.40	2,121.48	4,613	55,352
	6	29.47	2,201.41	4,786	57,437
	7	30.59	2,285.07	4,968	59,620
(Step 6 Effective December 19, 1999 after earning 169 longevity credits)					
(Step 7 Effective October 16, 1994 after earning 260 longevity credits)					

2011
MP Managerial/Professional Salary Schedule
For ranges coded with an 'M' in the salary schedule
Effective 12/17/11

	2	3	4	5	6	7	8	9	
range	hire	1 yr	2 yr	3 yr	4 yr	9 yr	13 yr	16 yr	range
5	19.60	20.54	21.53	22.56	23.25	23.97	24.68	25.47	5
6	20.67	21.67	22.71	23.79	24.53	25.28	26.04	26.84	6
7	21.93	23.00	24.11	25.27	26.02	26.83	27.64	28.48	7
8	23.59	24.74	25.91	27.16	27.99	28.86	29.74	30.65	8
9	25.63	26.85	28.13	29.51	30.43	31.35	32.29	33.29	9
10	27.79	29.12	30.52	31.98	32.96	33.97	35.03	36.12	10
11	30.10	31.56	33.07	34.63	35.71	36.80	37.95	39.10	11
12	32.38	33.93	35.58	37.27	38.44	39.61	40.81	42.07	12
13	34.89	36.54	38.32	40.13	41.36	42.64	43.92	45.26	13

2011
MP Senior Management Salary Schedule
For ranges coded with an 'M/P' in the salary schedule
Effective 12/17/11

	2	3	4	5	6	7	8	9	
range	hire	1 yr	2 yr	3 yr	4 yr	9 yr	13 yr	16 yr	range
14	37.32	39.18	41.10	43.11	44.44	45.85	47.25	48.70	14
15	39.95	41.91	43.96	46.13	47.56	49.02	50.57	52.12	15
16	42.73	44.84	47.04	49.37	50.87	52.47	54.08	55.73	16
17	45.75	47.98	50.33	52.82	54.44	56.13	57.86	59.69	17
18	48.94	51.35	53.89	56.49	58.27	60.05	61.94	63.84	18
19	52.37	54.94	57.63	60.48	62.35	64.28	66.26	68.33	19

DISTRICT 1199W/PROFESSIONALS FOR QUALITY HEALTH CARE SALARY SCHEDULE
For Positions Coded with "N" in the Salary Schedule
Effective 12/17/11

Classification Title	Range	Step	Hourly Rate	Bi-weekly ^K Rate	Monthly ^J Rate	Annual ^J Rate
Communicable Disease	16	1	23.51	1,880.80	4,075	48,901
Outreach Specialist		2	24.27	1,941.60	4,207	50,482
		3	25.05	2,004.00	4,342	52,104
		4	25.85	2,068.00	4,481	53,768
		5	26.68	2,134.40	4,625	55,494
		6	27.53	2,202.40	4,772	57,262
		7	28.41	2,272.80	4,924	59,093
Graduate Nurse	17	1	27.07	2,165.60	4,692	56,306
		2	27.93	2,234.40	4,841	58,094
		3	28.83	2,306.40	4,997	59,966
		4	29.75	2,380.00	5,157	61,880
		5	30.70	2,456.00	5,321	63,856
		6	31.68	2,534.40	5,491	65,894
		7	32.70	2,616.00	5,668	68,016
Classification Title	Range	Step	Rate	Rate	Rate	Rate
Dental Health Coord	18	1	27.61	2,208.80	4,786	57,429
Health Education Coord		2	28.51	2,280.80	4,942	59,301
Public Health Dietician		3	29.45	2,356.00	5,105	61,256
Public Health Info Officer		4	30.37	2,429.60	5,264	63,170
Public Health Nurse		5	31.31	2,504.80	5,427	65,125
		6	32.38	2,590.40	5,613	67,350
		7	33.36	2,668.80	5,782	69,389
Classification Title	Range	Step	Rate	Rate	Rate	Rate
HIV/Aids Coordinator	18A	1	29.02	2,321.60	5,030	60,362
Inservice Educ Coord		2	29.96	2,396.80	5,193	62,317
Occupational Therapist		3	30.92	2,473.60	5,360	64,314
PH Epidemiologist		4	31.90	2,552.00	5,529	66,352
Registered Dietician		5	32.94	2,635.20	5,710	68,515
Registered Nurse		6	33.95	2,716.00	5,885	70,616
WIC Leadworker		7	34.97	2,797.60	6,062	72,738
Breastfeeding Coordinator						
Immunication Coordinator						
Classification Title	Range	Step	Rate	Rate	Rate	Rate
Clinical Care Coordinator	19	1	30.47	2,437.60	5,282	63,378
		2	31.46	2,516.80	5,453	65,437
		3	32.49	2,599.20	5,632	67,579
		4	33.51	2,680.80	5,808	69,701
		5	34.54	2,763.20	5,987	71,843
		6	35.72	2,857.60	6,192	74,298
		7	36.80	2,944.00	6,379	76,544

^K Biweekly rate based on 80 hours.

^J Monthly and Annual rates based on 2,080 hours per year.

**WPPA SUPERVISORY LAW ENFORCEMENT UNIT
SALARY SCHEDULE -
For Classifications with an "O"
Effective 12/18/11**

RANGE	STEP	HOURLY	BIWEEKLY	MONTHLY	ANNUAL
17	1	\$ 28.90	\$ 2,312.00	\$ 5,009	\$ 60,112
	2	29.81	2,384.80	5,167	62,005
	3	30.68	2,454.40	5,318	63,814
	4	31.60	2,528.00	5,477	65,728
	5	32.74	2,619.20	5,675	68,099
	6	34.04	2,723.20	5,900	70,803
	7	35.37	2,829.60	6,131	73,570

RANGE	STEP	HOURLY	BIWEEKLY	MONTHLY	ANNUAL
19	1	\$ 30.96	\$ 2,476.80	\$ 5,366	\$ 64,397
	2	31.88	2,550.40	5,526	66,310
	3	32.82	2,625.60	5,689	68,266
	4	33.78	2,702.40	5,855	70,262
	5	35.02	2,801.60	6,070	72,842
	6	36.36	2,908.80	6,302	75,629
	7	37.76	3,020.80	6,545	78,541

2011
Dane County Professional Employees Union, AFSCME, AFL-CIO
For ranges coded with an 'P' in the salary schedule
Effective 12/17/11

range	2 hire	3 1 yr	4 2 yr	5 3 yr	6 4 yr	7 9 yr	8 13 yr	9 16 yr	range
5	19.89	20.85	21.85	22.90	23.60	24.33	25.05	25.84	5
6	20.97	21.99	23.04	24.14	24.90	25.66	26.43	27.23	6
7	22.26	23.34	24.46	25.65	26.41	27.22	28.05	28.90	7
8	23.94	25.10	26.30	27.56	28.41	29.28	30.18	31.11	8
9	26.01	27.24	28.54	29.94	30.88	31.82	32.76	33.78	9
10	28.20	29.55	30.97	32.46	33.44	34.47	35.55	36.66	10
11	30.55	32.02	33.56	35.14	36.24	37.35	38.51	39.68	11
12	32.86	34.43	36.10	37.82	39.01	40.19	41.42	42.69	12
13	35.40	37.08	38.88	40.73	41.97	43.27	44.57	45.93	13
14	37.87	39.76	41.70	43.74	45.09	46.53	47.95	49.42	14

PROFESSIONAL SOCIAL WORKERS LOCAL 2634 AFSCME AFL-CIO
For positions coded 'SW' in the salary schedule
Effective 12/17/11

RANGE	STEP	HOURLY RATE	BIWEEKLY RATE	MONTHLY RATE	ANNUAL RATE
16-18	1	20.05	1,604.00	3,475	41,704
	2	21.08	1,686.40	3,654	43,846
18	1	22.04	1,763.20	3,820	45,843
	2	23.08	1,846.40	4,001	48,006
	3	24.27	1,941.60	4,207	50,482
	4	25.38	2,030.40	4,399	52,790
	5	26.59	2,127.20	4,609	55,307
19	1	23.08	1,846.40	4,001	48,006
	2	24.27	1,941.60	4,207	50,482
	3	25.38	2,030.40	4,399	52,790
	4	26.59	2,127.20	4,609	55,307
	5	27.87	2,229.60	4,831	57,970
20	1	24.27	1,941.60	4,207	50,482
	2	25.38	2,030.40	4,399	52,790
	3	26.59	2,127.20	4,609	55,307
	4	27.87	2,229.60	4,831	57,970
	5	29.25	2,340.00	5,070	60,840
21	1	25.47	2,037.60	4,415	52,978
	2	26.67	2,133.60	4,623	55,474
	3	27.92	2,233.60	4,839	58,074
	4	29.25	2,340.00	5,070	60,840
	5	30.70	2,456.00	5,321	63,856

Advancement to Range 18 Step 1 and beyond is dependent upon prior accumulation of 120 hours of in-service credits. If the 120 hours are accumulated after earning more than 19.5 longevity credits, the employee shall be placed on the Step appropriate to the number of longevity credits, with no retroactivity.

**BUILDING & CONSTRUCTION TRADES COUNCIL OF S CENTRAL WI,
SALARY SCHEDULE - "T"
Effective 12/17/11**

CLASSIFICATION	12/17/2011
Carpenter	\$ 26.84
Electrician	\$ 31.36
Apprentice Electrician (40%)	\$ 12.55
(45%)	14.11
(55%)	17.25
(65%)	20.38
(75%)	23.53
(80%)	25.09
(100%)	31.36
Painter	\$ 25.79
Apprentice Painter (45%)	\$ 11.61
(55%)	14.18
(65%)	16.77
(75%)	19.34
(85%)	21.92
Steamfitter	\$ 33.03
Apprentice Steamfitter (40%)	\$ 13.21
(45%)	14.86
(50%)	16.52
(55%)	18.17
(60%)	19.82
(65%)	21.48
(70%)	23.12
(75%)	24.77
(80%)	26.43
(85%)	28.08