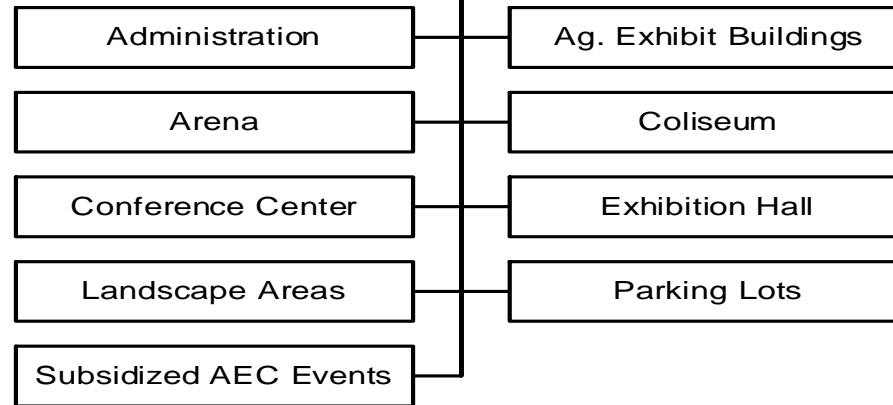


Alliant Energy Center of Dane County



Division/Program	FTE	Expenditures	Program Specific Revenues	Revenue Over/(Under) Expenses
Administration	11.000	\$2,134,082	\$336,400	(\$1,797,682)
Coliseum	5.300	\$1,926,500	\$2,240,600	\$314,100
Exhibition Hall	10.800	\$2,960,500	\$4,207,900	\$1,247,400
Conference Center	2.400	\$441,100	\$509,300	\$68,200
Arena	0.500	\$470,300	\$395,800	(\$74,500)
Agricultural Exhibit Buildings	1.200	\$335,300	\$250,100	(\$85,200)
Parking Lots	0.300	\$300,050	\$62,400	(\$237,650)
Landscape Areas	0.500	\$277,750	\$487,000	\$209,250
Alliant Energy Center of Dane County	32.000	\$8,845,582	\$8,489,500	(\$356,082) Appropriation

Division/Program	FTE	Expenditures	Program Specific Revenues	General Purpose Revenues
County Subsidized Alliant Energy Center Events	0.000	\$59,122	\$0	\$59,122 Appropriation

Alliant Energy Center of Dane County - Total	32.000	\$8,904,704	\$8,489,500	\$415,204 Memo Total
---	---------------	--------------------	--------------------	-----------------------------

Dept:	Alliant Energy Center of Dane County	92	DANE COUNTY	Fund Name:	General Fund
Prgm:	Administration	110/00		Fund No:	1110

Mission:

The Alliant Energy Center will effectively and efficiently meet the public assembly needs of all Dane County to do business, pursue recreation, be entertained, and otherwise gather for purposes positively beneficial to life in the County of Dane, WI.

Description:

The Alliant Energy Center complex encompasses over 160 acres of land, a variety of multi-purpose buildings and paved parking for over 5,800 cars. The Center provides a variety of activities for the citizens of Dane County, the State of Wisconsin, and neighboring states. Events include conventions, consumer shows, amateur sports, concerts, family shows, trade shows, agricultural events, youth hockey events, outdoor festivals, banquets, retail sales, and other activities such as the World Dairy Expo, The Midwest Horse Fair, and the Dane County Fair. Annual attendance at Center activities is approximately 1 million people. The Administration of the Center includes Event Service & Operations Service; Sales, Promotions and Public Relations; General Administration; and Physical Plant divisions. Approximately 10% of the Center's Administration expense budget is indirect charges from the Dane County General Fund. Expenses associated with 7,400 square feet of the Center's Administration Building are included in this cost center.

	Actual 2011	Adopted 2012	2011 Carry Forward	Board Transfers	Budget As Modified	2012 YTD	Estimated 2012	Executive Recommended
PROGRAM EXPENSES								
Personal Services	\$1,471,760	\$1,384,600	\$0	\$0	\$1,384,600	\$421,686	\$1,412,511	\$1,360,600
Operating Expenses	\$541,426	\$560,700	\$71,122	\$0	\$631,822	\$67,040	\$620,976	\$560,100
Contractual Services	\$221,236	\$190,700	\$0	\$0	\$190,700	\$63,473	\$195,449	\$213,382
Operating Capital	\$0	\$0	\$25,641	\$0	\$25,641	\$0	\$25,641	\$0
TOTAL	\$2,234,422	\$2,136,000	\$96,763	\$0	\$2,232,763	\$552,199	\$2,254,577	\$2,134,082
PROGRAM REVENUE								
Taxes	\$0	\$0	\$0	\$0	\$0	\$0	\$0	\$0
Intergovernmental Revenue	\$3,317	\$0	\$0	\$0	\$0	\$0	\$0	\$0
Licenses & Permits	\$0	\$0	\$0	\$0	\$0	\$0	\$0	\$0
Fines, Forfeits & Penalties	\$0	\$0	\$0	\$0	\$0	\$0	\$0	\$0
Public Charges for Services	\$393,277	\$329,700	\$0	\$0	\$329,700	\$0	\$329,700	\$336,300
Intergovernmental Charge for Services	\$0	\$0	\$0	\$0	\$0	\$0	\$0	\$0
Miscellaneous	\$298	\$100	\$0	\$0	\$100	\$28	\$100	\$100
Other Financing Sources	\$0	\$0	\$0	\$0	\$0	\$0	\$0	\$0
TOTAL	\$396,892	\$329,800	\$0	\$0	\$329,800	\$28	\$329,800	\$336,400
REV. OVER/(UNDER) EXPENSES	(\$1,837,529)	(\$1,806,200)			(\$1,902,963)			(\$1,797,682)
F.T.E. STAFF	13.500	13.000					13.000	11.000

Dept:	Alliant Energy Center of Dane County	92							Fund Name:	General Fund
Prgm:	Administration	110/00							Fund No.:	1110
	2013	Net Decision Items							2013 Adopted	
DI#	Base	01	02	03	04	05	06	07	Budget	
PROGRAM EXPENSES										
Personal Services	\$1,469,200	\$8,600	\$3,700	\$0	(\$120,900)	\$0	\$0	\$0	\$1,360,600	
Operating Expenses	\$561,300	(\$4,100)	\$2,700	\$0	\$0	\$200	\$0	\$0	\$560,100	
Contractual Services	\$191,200	\$4,700	\$100	\$17,382	\$0	\$0	\$0	\$0	\$213,382	
Operating Capital	\$0	\$0	\$0	\$0	\$0	\$0	\$0	\$0	\$0	
TOTAL	\$2,221,700	\$9,200	\$6,500	\$17,382	(\$120,900)	\$200	\$0	\$0	\$2,134,082	
PROGRAM REVENUE										
Taxes	\$0	\$0	\$0	\$0	\$0	\$0	\$0	\$0	\$0	
Intergovernmental Revenue	\$0	\$0	\$0	\$0	\$0	\$0	\$0	\$0	\$0	
Licenses & Permits	\$0	\$0	\$0	\$0	\$0	\$0	\$0	\$0	\$0	
Fines, Forfeits & Penalties	\$0	\$0	\$0	\$0	\$0	\$0	\$0	\$0	\$0	
Public Charges for Services	\$329,700	\$6,600	\$0	\$0	\$0	\$0	\$0	\$0	\$336,300	
Intergovernmental Charge for Services	\$0	\$0	\$0	\$0	\$0	\$0	\$0	\$0	\$0	
Miscellaneous	\$100	\$0	\$0	\$0	\$0	\$0	\$0	\$0	\$100	
Other Financing Sources	\$0	\$0	\$0	\$0	\$0	\$0	\$0	\$0	\$0	
TOTAL	\$329,800	\$6,600	\$0	\$0	\$0	\$0	\$0	\$0	\$336,400	
REV. OVER/(UNDER) EXPENSES	(\$1,891,900)	(\$2,600)	(\$6,500)	(\$17,382)	\$120,900	(\$200)	\$0	\$0	(\$1,797,682)	
F.T.E. STAFF	13.000	0.000	0.000	0.000	(2.000)	0.000	0.000	0.000	11.000	

NARRATIVE INFORMATION ABOUT DECISION ITEMS SHOWN ABOVE		Expenditures	Revenue	Revenue Over/(Under) Expenses
2013 BUDGET BASE		\$2,221,700	\$329,800	(\$1,891,900)
DI #	AEC-ADMN-1 Event Changes			
DEPT	This decision item reflects the changes in the events that have occurred over the last year for 2012 and the projected changes for 2013.	\$600	\$6,600	\$6,000
EXEC	Approve as requested. Also, adjust retirement accounts to reflect the actual contribution rates that will be in effect for 2013.	\$8,600	\$0	(\$8,600)
ADOPTED	Approved as Recommended	\$0	\$0	\$0
NET DI # AEC-ADMN-1		\$9,200	\$6,600	(\$2,600)

Dept:	Alliant Energy Center of Dane County	92	Fund Name:	General Fund
Prgm:	Administration	110/00	Fund No.:	1110

NARRATIVE INFORMATION ABOUT DECISION ITEMS SHOWN ON PREVIOUS PAGE			Expenditures	Revenue	Revenue Over/(Under) Expenses
DI #	AEC-ADMN-2	Inflation			
DEPT	This decision item increases the rental rates 4% and rental equipment & electrical rates 4%, as well as increases selected operating and contractual expenses by 3%.		\$6,500	\$0	(\$6,500)
EXEC	Approved as Requested		\$0	\$0	\$0
ADOPTED	Approved as Recommended		\$0	\$0	\$0
	NET DI #	AEC-ADMN-2	\$6,500	\$0	(\$6,500)
DI #	AEC-ADMN-3	Indirect Costs			
DEPT			\$0	\$0	\$0
EXEC	Increase expenditures to reflect receipt of the County's final 2013 Indirect Cost Plan.		\$17,382	\$0	(\$17,382)
ADOPTED	Approved as Recommended		\$0	\$0	\$0
	NET DI #	AEC-ADMN-3	\$17,382	\$0	(\$17,382)
DI #	AEC-ADMN-4	Position Changes			
DEPT	This decision makes several staff changes to reduce the Center's ongoing operating costs and help stabilize the Center's financial condition.		(\$120,900)	\$0	\$120,900
EXEC	Approved as Requested		\$0	\$0	\$0
ADOPTED	Approved as Recommended		\$0	\$0	\$0
	NET DI #	AEC-ADMN-4	(\$120,900)	\$0	\$120,900

Dept:	Alliant Energy Center of Dane County	92	Fund Name:	General Fund
Prgm:	Administration	110/00	Fund No.:	1110

NARRATIVE INFORMATION ABOUT DECISION ITEMS SHOWN ON PREVIOUS PAGE			Expenditures	Revenue	Revenue Over/(Under) Expenses
DI #	AEC-ADMN-5	Debt Service			
DEPT			\$0	\$0	\$0
EXEC	Increase expenditures to account for actual Debt Service on 2012 debt issuance.		\$200	\$0	(\$200)
ADOPTED	Approved as Recommended		\$0	\$0	\$0
	NET DI #	AEC-ADMN-5	\$200	\$0	(\$200)

--	--	--	--	--	--

2013 ADOPTED BUDGET	\$2,134,082	\$336,400	(\$1,797,682)
----------------------------	-------------	-----------	---------------

Dept:	Alliant Energy Center of Dane County	92	DANE COUNTY	Fund Name:	General Fund
Prgm:	Coliseum	508/00		Fund No:	1110

Mission:

The Alliant Energy Center will effectively and efficiently meet the public assembly needs of all Dane County to do business, pursue recreation, be entertained, and otherwise gather for purposes positively beneficial to life in the County of Dane, WI.

Description:

The Veterans Memorial Coliseum is a multi-purpose arena with 7,700 permanent seats and a capacity of 10,200. The Coliseum cost center identifies by category the direct revenue and expenses for the facility. Activities and functions conducted in the Coliseum include sporting & entertainment events, touring trade shows, conventions, motor sports events, consumer expositions, major livestock events, concerts, and retail sales events.

	Actual 2011	Adopted 2012	2011 Carry Forward	Board Transfers	Budget As Modified	2012 YTD	Estimated 2012	Executive Recommended
PROGRAM EXPENSES								
Personal Services	\$758,508	\$834,500	\$0	\$0	\$834,500	\$328,682	\$602,084	\$781,900
Operating Expenses	\$423,487	\$895,100	\$0	\$0	\$895,100	\$206,652	\$926,183	\$909,200
Contractual Services	\$212,770	\$229,700	\$0	\$0	\$229,700	\$158,340	\$264,510	\$235,400
Operating Capital	\$0	\$0	\$80,000	\$0	\$80,000	\$6,064	\$80,000	\$0
TOTAL	\$1,394,765	\$1,959,300	\$80,000	\$0	\$2,039,300	\$699,738	\$1,872,777	\$1,926,500
PROGRAM REVENUE								
Taxes	\$0	\$0	\$0	\$0	\$0	\$0	\$0	\$0
Intergovernmental Revenue	\$90,130	\$83,200	\$0	\$0	\$83,200	\$7,084	\$89,753	\$82,400
Licenses & Permits	\$0	\$0	\$0	\$0	\$0	\$0	\$0	\$0
Fines, Forfeits & Penalties	\$0	\$0	\$0	\$0	\$0	\$0	\$0	\$0
Public Charges for Services	\$1,831,515	\$1,980,700	\$0	\$0	\$1,980,700	\$1,125,414	\$1,925,084	\$2,112,600
Intergovernmental Charge for Services	\$0	\$0	\$0	\$0	\$0	\$0	\$0	\$0
Miscellaneous	\$52,857	\$45,600	\$0	\$0	\$45,600	\$31,093	\$53,385	\$45,600
Other Financing Sources	\$0	\$0	\$0	\$0	\$0	\$0	\$0	\$0
TOTAL	\$1,974,502	\$2,109,500	\$0	\$0	\$2,109,500	\$1,163,591	\$2,068,222	\$2,240,600
REV. OVER/(UNDER) EXPENSES	\$579,737	\$150,200			\$70,200			\$314,100
F.T.E. STAFF	5.300	5.300					5.300	5.300

Dept:	Alliant Energy Center of Dane County	92							Fund Name:	General Fund
Prgm:	Coliseum	508/00							Fund No.:	1110
DI#	2013 Base	Net Decision Items							2013 Adopted Budget	
		01	02	03	04	05	06	07		
PROGRAM EXPENSES										
Personal Services	\$764,900	\$5,100	\$11,900	\$0	\$0	\$0	\$0	\$0	\$781,900	
Operating Expenses	\$894,000	\$0	\$2,800	\$12,400	\$0	\$0	\$0	\$0	\$909,200	
Contractual Services	\$235,400	(\$1,900)	\$1,900	\$0	\$0	\$0	\$0	\$0	\$235,400	
Operating Capital	\$0	\$0	\$0	\$0	\$0	\$0	\$0	\$0	\$0	
TOTAL	\$1,894,300	\$3,200	\$16,600	\$12,400	\$0	\$0	\$0	\$0	\$1,926,500	
PROGRAM REVENUE										
Taxes	\$0	\$0	\$0	\$0	\$0	\$0	\$0	\$0	\$0	
Intergovernmental Revenue	\$82,300	\$100	\$0	\$0	\$0	\$0	\$0	\$0	\$82,400	
Licenses & Permits	\$0	\$0	\$0	\$0	\$0	\$0	\$0	\$0	\$0	
Fines, Forfeits & Penalties	\$0	\$0	\$0	\$0	\$0	\$0	\$0	\$0	\$0	
Public Charges for Services	\$1,980,700	\$84,400	\$38,300	\$0	\$0	\$9,200	\$0	\$0	\$2,112,600	
Intergovernmental Charge for Services	\$0	\$0	\$0	\$0	\$0	\$0	\$0	\$0	\$0	
Miscellaneous	\$45,600	\$0	\$0	\$0	\$0	\$0	\$0	\$0	\$45,600	
Other Financing Sources	\$0	\$0	\$0	\$0	\$0	\$0	\$0	\$0	\$0	
TOTAL	\$2,108,600	\$84,500	\$38,300	\$0	\$0	\$9,200	\$0	\$0	\$2,240,600	
REV. OVER/(UNDER) EXPENSES	\$214,300	\$81,300	\$21,700	(\$12,400)	\$0	\$9,200	\$0	\$0	\$314,100	
F.T.E. STAFF	5.300	0.000	0.000	0.000	0.000	0.000	0.000	0.000	5.300	

NARRATIVE INFORMATION ABOUT DECISION ITEMS SHOWN ABOVE		Expenditures	Revenue	Revenue Over/(Under) Expenses
2013 BUDGET BASE		\$1,894,300	\$2,108,600	\$214,300
DI #	AEC-COLS-1 Event Changes			
DEPT	This decision item reflects the changes in the events that have occurred over the last year for 2012 and the projected changes for 2013.	(\$1,900)	\$84,500	\$86,400
EXEC	Approve as requested. Also, adjust retirement accounts to reflect the actual contribution rates that will be in effect for 2013.	\$5,100	\$0	(\$5,100)
ADOPTED	Approved as Recommended	\$0	\$0	\$0
NET DI # AEC-COLS-1		\$3,200	\$84,500	\$81,300

Dept:	Alliant Energy Center of Dane County	92	Fund Name:	General Fund
Prgm:	Coliseum	508/00	Fund No.:	1110

NARRATIVE INFORMATION ABOUT DECISION ITEMS SHOWN ON PREVIOUS PAGE			Expenditures	Revenue	Revenue Over/(Under) Expenses
DI #	AEC-COLS-2	Inflation			
DEPT	This decision item increases the rental rates 4% and rental equipment & electrical rates 4%, as well as increases selected operating and contractual expenses by 3%.		\$16,600	\$38,300	\$21,700
EXEC	Approved as Requested		\$0	\$0	\$0
ADOPTED	Approved as Recommended		\$0	\$0	\$0
NET DI # AEC-COLS-2			\$16,600	\$38,300	\$21,700
DI #	AEC-COLS-3	2012 Debt Service			
DEPT			\$0	\$0	\$0
EXEC	Increase expenditures to account for actual Debt Service on 2012 debt issuance.		\$12,400	\$0	(\$12,400)
ADOPTED	Approved as Recommended		\$0	\$0	\$0
NET DI # AEC-COLS-3			\$12,400	\$0	(\$12,400)
DI #	AEC-COLS-4	There is no Decision Item			
DEPT			\$0	\$0	\$0
EXEC			\$0	\$0	\$0
ADOPTED			\$0	\$0	\$0
NET DI # AEC-COLS-4			\$0	\$0	\$0

Dept:	Alliant Energy Center of Dane County	92	Fund Name:	General Fund
Prgm:	Coliseum	508/00	Fund No.:	1110

NARRATIVE INFORMATION ABOUT DECISION ITEMS SHOWN ON PREVIOUS PAGE			Expenditures	Revenue	Revenue Over/(Under) Expenses
DI #	AEC-COLS-5	Parking Fee Increase			
DEPT	This decision item increases the parking fee at the Center from \$6.00 per car to \$6.50 per car on July 1, 2013. The fee for buses increases from \$18.00 to \$19.50 and for multi-day passes from \$5.50 to \$6.00.		\$0	\$9,200	\$9,200
EXEC	Approved as Requested		\$0	\$0	\$0
ADOPTED	Approved as Recommended		\$0	\$0	\$0
	NET DI #	AEC-COLS-5	\$0	\$9,200	\$9,200

--	--	--	--	--	--

2013 ADOPTED BUDGET	\$1,926,500	\$2,240,600	\$314,100
----------------------------	-------------	-------------	-----------

Dept:	Alliant Energy Center of Dane County	92	DANE COUNTY	Fund Name:	General Fund
Prgm:	Exhibition Hall	510/00		Fund No:	1110

Mission:

The Alliant Energy Center will effectively and efficiently meet the public assembly needs of all Dane County to do business, pursue recreation, be entertained, and otherwise gather for purposes positively beneficial to life in the County of Dane, WI.

Description:

The Exhibition Hall offers 100,000 square feet of continuous floor area plus approximately 30,000 square feet of lobby space. Activities and functions conducted in this facility include conventions, banquets, trade shows, consumer shows, antique shows and a variety of entertainment events such as dances, stage presentations and smaller concerts. Among the events that use the entire Hall are: World Dairy Expo, Midwest Horse Fair, Madison Area Builders Home Show, Deer and Turkey Expo, Dane County RV Show,, Quilt Show, Canoecopia, Garden Expo, and Madison Fishing Expo.

	Actual 2011	Adopted 2012	2011 Carry Forward	Board Transfers	Budget As Modified	2012 YTD	Estimated 2012	Executive Recommended
PROGRAM EXPENSES								
Personal Services	\$1,623,770	\$1,502,400	\$0	\$0	\$1,502,400	\$467,728	\$772,691	\$1,493,300
Operating Expenses	\$645,191	\$1,372,700	\$6,257	\$0	\$1,378,957	\$835,671	\$1,360,837	\$1,387,000
Contractual Services	\$76,472	\$83,300	\$20,000	\$0	\$103,300	\$32,823	\$125,675	\$80,200
Operating Capital	\$0	\$0	\$310,000	\$0	\$310,000	\$0	\$310,000	\$0
TOTAL	\$2,345,433	\$2,958,400	\$336,257	\$0	\$3,294,657	\$1,336,222	\$2,569,203	\$2,960,500
PROGRAM REVENUE								
Taxes	\$0	\$0	\$0	\$0	\$0	\$0	\$0	\$0
Intergovernmental Revenue	\$238,051	\$240,000	\$0	\$0	\$240,000	\$195,698	\$218,850	\$219,300
Licenses & Permits	\$0	\$0	\$0	\$0	\$0	\$0	\$0	\$0
Fines, Forfeits & Penalties	\$0	\$0	\$0	\$0	\$0	\$0	\$0	\$0
Public Charges for Services	\$3,896,203	\$3,600,800	\$300,000	\$0	\$3,900,800	\$2,175,590	\$4,230,607	\$3,840,600
Intergovernmental Charge for Services	\$0	\$0	\$0	\$0	\$0	\$0	\$0	\$0
Miscellaneous	\$87,532	\$183,000	\$0	\$0	\$183,000	\$11,077	\$183,100	\$148,000
Other Financing Sources	\$0	\$0	\$0	\$0	\$0	\$0	\$0	\$0
TOTAL	\$4,221,786	\$4,023,800	\$300,000	\$0	\$4,323,800	\$2,382,365	\$4,632,557	\$4,207,900
REV. OVER/(UNDER) EXPENSES	\$1,876,353	\$1,065,400			\$1,029,143			\$1,247,400
F.T.E. STAFF	12.800	10.800				10.800		10.800

Dept:	Alliant Energy Center of Dane County	92							Fund Name:	General Fund
Prgm:	Exhibition Hall	510/00							Fund No.:	1110
DI#	2013 Base	Net Decision Items							2013 Adopted Budget	
		01	02	03	04	05	06	07		
PROGRAM EXPENSES										
Personal Services	\$1,516,500	\$9,800	\$17,000	\$0	(\$50,000)	\$0	\$0	\$0	\$1,493,300	
Operating Expenses	\$1,377,200	\$0	\$5,000	\$4,800	\$0	\$0	\$0	\$0	\$1,387,000	
Contractual Services	\$89,000	(\$10,100)	\$1,300	\$0	\$0	\$0	\$0	\$0	\$80,200	
Operating Capital	\$0	\$0	\$0	\$0	\$0	\$0	\$0	\$0	\$0	
TOTAL	\$2,982,700	(\$300)	\$23,300	\$4,800	(\$50,000)	\$0	\$0	\$0	\$2,960,500	
PROGRAM REVENUE										
Taxes	\$0	\$0	\$0	\$0	\$0	\$0	\$0	\$0	\$0	
Intergovernmental Revenue	\$239,200	(\$19,900)	\$0	\$0	\$0	\$0	\$0	\$0	\$219,300	
Licenses & Permits	\$0	\$0	\$0	\$0	\$0	\$0	\$0	\$0	\$0	
Fines, Forfeits & Penalties	\$0	\$0	\$0	\$0	\$0	\$0	\$0	\$0	\$0	
Public Charges for Services	\$3,600,800	\$125,600	\$98,000	\$0	\$0	\$16,200	\$0	\$0	\$3,840,600	
Intergovernmental Charge for Services	\$0	\$0	\$0	\$0	\$0	\$0	\$0	\$0	\$0	
Miscellaneous	\$183,000	(\$35,000)	\$0	\$0	\$0	\$0	\$0	\$0	\$148,000	
Other Financing Sources	\$0	\$0	\$0	\$0	\$0	\$0	\$0	\$0	\$0	
TOTAL	\$4,023,000	\$70,700	\$98,000	\$0	\$0	\$16,200	\$0	\$0	\$4,207,900	
REV. OVER/(UNDER) EXPENSES	\$1,040,300	\$71,000	\$74,700	(\$4,800)	\$50,000	\$16,200	\$0	\$0	\$1,247,400	
F.T.E. STAFF	10.800	0.000	0.000	0.000	0.000	0.000	0.000	0.000	10.800	

NARRATIVE INFORMATION ABOUT DECISION ITEMS SHOWN ABOVE		Expenditures	Revenue	Revenue Over/(Under) Expenses
2013 BUDGET BASE		\$2,982,700	\$4,023,000	\$1,040,300
DI #	AEC-XHAL-1 Event Changes			
DEPT	This decision item reflects the changes in the events that have occurred over the last year for 2012 and the projected changes for 2013.	(\$10,100)	\$70,700	\$80,800
EXEC	Approve as requested. Also, adjust retirement accounts to reflect the actual contribution rates that will be in effect for 2013.	\$9,800	\$0	(\$9,800)
ADOPTED	Approved as Recommended	\$0	\$0	\$0
NET DI # AEC-XHAL-1		(\$300)	\$70,700	\$71,000

Dept:	Alliant Energy Center of Dane County	92	Fund Name:	General Fund
Prgm:	Exhibition Hall	510/00	Fund No.:	1110

NARRATIVE INFORMATION ABOUT DECISION ITEMS SHOWN ON PREVIOUS PAGE			Expenditures	Revenue	Revenue Over/(Under) Expenses
DI #	AEC-XHAL-2	Inflation			
DEPT	This decision item increases the rental rates 4% and rental equipment & electrical rates 4%, as well as increases selected operating and contractual expenses by 3%.		\$23,300	\$98,000	\$74,700
EXEC	Approved as Requested		\$0	\$0	\$0
ADOPTED	Approved as Recommended		\$0	\$0	\$0
NET DI # AEC-XHAL-2			\$23,300	\$98,000	\$74,700
DI #	AEC-XHAL-3	2012 Debt Service			
DEPT			\$0	\$0	\$0
EXEC	Increase expenditures to account for actual Debt Service on 2012 debt issuance.		\$4,800	\$0	(\$4,800)
ADOPTED	Approved as Recommended		\$0	\$0	\$0
NET DI # AEC-XHAL-3			\$4,800	\$0	(\$4,800)
DI #	AEC-XHAL-4	Position Changes			
DEPT	This decision makes several staff changes to reduce the Center's ongoing operating costs and help stabilize the Center's financial condition.		(\$50,000)	\$0	\$50,000
EXEC	Approved as Requested		\$0	\$0	\$0
ADOPTED	Approved as Recommended		\$0	\$0	\$0
NET DI # AEC-XHAL-4			(\$50,000)	\$0	\$50,000

Dept:	Alliant Energy Center of Dane County	92	Fund Name:	General Fund
Prgm:	Exhibition Hall	510/00	Fund No.:	1110

NARRATIVE INFORMATION ABOUT DECISION ITEMS SHOWN ON PREVIOUS PAGE			Expenditures	Revenue	Revenue Over/(Under) Expenses
DI #	AEC-XHAL-5	Parking Fee Increase			
DEPT	This decision item increases the parking fee at the Center from \$6.00 per car to \$6.50 per car on July 1, 2013. The fee for buses increases from \$18.00 to \$19.50 and for multi-day passes from \$5.50 to \$6.00.		\$0	\$16,200	\$16,200
EXEC	Approved as Requested		\$0	\$0	\$0
ADOPTED	Approved as Recommended		\$0	\$0	\$0
	NET DI #	AEC-XHAL-5	\$0	\$16,200	\$16,200

--	--	--	--	--	--

2013 ADOPTED BUDGET	\$2,960,500	\$4,207,900	\$1,247,400
----------------------------	-------------	-------------	-------------

Dept:	Alliant Energy Center of Dane County	92	DANE COUNTY			Fund Name:	General Fund
Prgm:	Conference Center	512/00				Fund No:	1110

Mission:

The Alliant Energy Center will effectively and efficiently meet the public assembly needs of all Dane County to do business, pursue recreation, be entertained, and otherwise gather for purposes positively beneficial to life in the County of Dane, WI.

Description:

The Conference Center, which is located within the Exhibition Hall building, includes twelve meeting rooms with moveable walls, a boardroom, upper level lounge, common area atrium, commercial kitchen and a lobby area. Activities and functions conducted in this facility include, banquets, meetings, professional exams, accreditations, receptions, and seminars.

	Actual 2011	Adopted 2012	2011 Carry Forward	Board Transfers	Budget As Modified	2012 YTD	Estimated 2012	Executive Recommended
PROGRAM EXPENSES								
Personal Services	\$216,427	\$266,400	\$0	\$0	\$266,400	\$58,012	\$1,290,037	\$324,100
Operating Expenses	\$76,564	\$93,800	\$0	\$0	\$93,800	\$27,363	\$88,213	\$96,400
Contractual Services	\$18,396	\$19,900	\$0	\$0	\$19,900	\$7,475	\$28,309	\$20,600
Operating Capital	\$0	\$0	\$15,000	\$0	\$15,000	\$0	\$15,000	\$0
TOTAL	\$311,387	\$380,100	\$15,000	\$0	\$395,100	\$92,851	\$1,421,559	\$441,100
PROGRAM REVENUE								
Taxes	\$0	\$0	\$0	\$0	\$0	\$0	\$0	\$0
Intergovernmental Revenue	\$3,863	\$4,000	\$0	\$0	\$4,000	\$855	\$5,719	\$3,900
Licenses & Permits	\$0	\$0	\$0	\$0	\$0	\$0	\$0	\$0
Fines, Forfeits & Penalties	\$0	\$0	\$0	\$0	\$0	\$0	\$0	\$0
Public Charges for Services	\$466,693	\$526,400	\$0	\$0	\$526,400	\$168,554	\$503,268	\$502,500
Intergovernmental Charge for Services	\$0	\$0	\$0	\$0	\$0	\$0	\$0	\$0
Miscellaneous	\$1,466	\$17,900	\$0	\$0	\$17,900	\$52	\$1,182	\$2,900
Other Financing Sources	\$0	\$0	\$0	\$0	\$0	\$0	\$0	\$0
TOTAL	\$472,022	\$548,300	\$0	\$0	\$548,300	\$169,461	\$510,169	\$509,300
REV. OVER/(UNDER) EXPENSES	\$160,635	\$168,200			\$153,200			\$68,200
F.T.E. STAFF	2.400	2.400					2.400	2.400

Dept:	Alliant Energy Center of Dane County	92							Fund Name:	General Fund
Prgm:	Conference Center	512/00							Fund No.:	1110
DI#	2013 Base	Net Decision Items							2013 Adopted Budget	
		01	02	03	04	05	06	07		
PROGRAM EXPENSES										
Personal Services	\$321,300	\$1,800	\$1,000	\$0	\$0	\$0	\$0	\$0	\$324,100	
Operating Expenses	\$95,300	\$0	\$500	\$600	\$0	\$0	\$0	\$0	\$96,400	
Contractual Services	\$21,700	(\$1,500)	\$400	\$0	\$0	\$0	\$0	\$0	\$20,600	
Operating Capital	\$0	\$0	\$0	\$0	\$0	\$0	\$0	\$0	\$0	
TOTAL	\$438,300	\$300	\$1,900	\$600	\$0	\$0	\$0	\$0	\$441,100	
PROGRAM REVENUE										
Taxes	\$0	\$0	\$0	\$0	\$0	\$0	\$0	\$0	\$0	
Intergovernmental Revenue	\$4,000	(\$100)	\$0	\$0	\$0	\$0	\$0	\$0	\$3,900	
Licenses & Permits	\$0	\$0	\$0	\$0	\$0	\$0	\$0	\$0	\$0	
Fines, Forfeits & Penalties	\$0	\$0	\$0	\$0	\$0	\$0	\$0	\$0	\$0	
Public Charges for Services	\$526,400	(\$40,300)	\$14,100	\$0	\$0	\$2,300	\$0	\$0	\$502,500	
Intergovernmental Charge for Services	\$0	\$0	\$0	\$0	\$0	\$0	\$0	\$0	\$0	
Miscellaneous	\$17,900	(\$15,000)	\$0	\$0	\$0	\$0	\$0	\$0	\$2,900	
Other Financing Sources	\$0	\$0	\$0	\$0	\$0	\$0	\$0	\$0	\$0	
TOTAL	\$548,300	(\$55,400)	\$14,100	\$0	\$0	\$2,300	\$0	\$0	\$509,300	
REV. OVER/(UNDER) EXPENSES	\$110,000	(\$55,700)	\$12,200	(\$600)	\$0	\$2,300	\$0	\$0	\$68,200	
F.T.E. STAFF	2.400	0.000	0.000	0.000	0.000	0.000	0.000	0.000	2.400	

NARRATIVE INFORMATION ABOUT DECISION ITEMS SHOWN ABOVE		Expenditures	Revenue	Revenue Over/(Under) Expenses
2013 BUDGET BASE		\$438,300	\$548,300	\$110,000
DI #	AEC-CONF-1 Event Changes			
DEPT	This decision item reflects the changes in the events that have occurred over the last year for 2012 and the projected changes for 2013.	(\$1,500)	(\$55,400)	(\$53,900)
EXEC	Approve as requested. Also, adjust retirement accounts to reflect the actual contribution rates that will be in effect for 2013.	\$1,800	\$0	(\$1,800)
ADOPTED	Approved as Recommended	\$0	\$0	\$0
NET DI # AEC-CONF-1		\$300	(\$55,400)	(\$55,700)

Dept:	Alliant Energy Center of Dane County	92	Fund Name:	General Fund
Prgm:	Conference Center	512/00	Fund No.:	1110

NARRATIVE INFORMATION ABOUT DECISION ITEMS SHOWN ON PREVIOUS PAGE			Expenditures	Revenue	Revenue Over/(Under) Expenses
DI #	AEC-CONF-2	Inflation			
DEPT	This decision item increases the rental rates 4% and rental equipment & electrical rates 4%, as well as increases selected operating and contractual expenses by 3%.		\$1,900	\$14,100	\$12,200
EXEC	Approved as Requested		\$0	\$0	\$0
ADOPTED	Approved as Recommended		\$0	\$0	\$0
NET DI # AEC-CONF-2			\$1,900	\$14,100	\$12,200
DI #	AEC-CONF-3	2012 Debt Service			
DEPT			\$0	\$0	\$0
EXEC	Increase expenditures to account for actual Debt Service on 2012 debt issuance.		\$600	\$0	(\$600)
ADOPTED	Approved as Recommended		\$0	\$0	\$0
NET DI # AEC-CONF-3			\$600	\$0	(\$600)
DI #	AEC-CONF-4	There is no Decision Item			
DEPT			\$0	\$0	\$0
EXEC			\$0	\$0	\$0
ADOPTED			\$0	\$0	\$0
NET DI # AEC-CONF-4			\$0	\$0	\$0

Dept:	Alliant Energy Center of Dane County	92	Fund Name:	General Fund
Prgm:	Conference Center	512/00	Fund No.:	1110

NARRATIVE INFORMATION ABOUT DECISION ITEMS SHOWN ON PREVIOUS PAGE			Expenditures	Revenue	Revenue Over/(Under) Expenses
DI #	AEC-CONF-5	Parking Fee Increase			
DEPT	This decision item increases the parking fee at the Center from \$6.00 per car to \$6.50 per car on July 1, 2013. The fee for buses increases from \$18.00 to \$19.50 and for multi-day passes from \$5.50 to \$6.00.		\$0	\$2,300	\$2,300
EXEC	Approved as Requested		\$0	\$0	\$0
ADOPTED	Approved as Recommended		\$0	\$0	\$0
	NET DI #	AEC-CONF-5	\$0	\$2,300	\$2,300

--	--	--	--	--	--

2013 ADOPTED BUDGET	\$441,100	\$509,300	\$68,200
----------------------------	-----------	-----------	----------

Dept:	Alliant Energy Center of Dane County	92	DANE COUNTY	Fund Name:	General Fund
Prgm:	Arena	514/00		Fund No:	1110

Mission:

The Alliant Energy Center will effectively and efficiently meet the public assembly needs of all Dane County to do business, pursue recreation, be entertained, and otherwise gather for purposes positively beneficial to life in the County of Dane, WI.

Description:

Built in 1953 and remodeled in 1993, the Arena offers 23,400 square feet of floor space. Activities and functions presented in the facility are auctions, retail/consumer shows, farm equipment expositions and sales, horse shows and livestock shows, and sales. From mid October through the end of February the building is dedicated to UW Men's hockey practice and youth ice hockey programs.

	Actual 2011	Adopted 2012	2011 Carry Forward	Board Transfers	Budget As Modified	2012 YTD	Estimated 2012	Executive Recommended
PROGRAM EXPENSES								
Personal Services	\$174,639	\$160,900	\$0	\$0	\$160,900	\$43,763	\$153,486	\$143,400
Operating Expenses	\$111,302	\$344,000	\$0	\$0	\$344,000	\$219,763	\$299,971	\$312,700
Contractual Services	\$12,487	\$13,300	\$0	\$0	\$13,300	\$6,597	\$21,632	\$14,200
Operating Capital	\$0	\$0	\$20,000	\$0	\$20,000	\$0	\$20,000	\$0
TOTAL	\$298,429	\$518,200	\$20,000	\$0	\$538,200	\$270,124	\$495,089	\$470,300
PROGRAM REVENUE								
Taxes	\$0	\$0	\$0	\$0	\$0	\$0	\$0	\$0
Intergovernmental Revenue	\$181,662	\$188,800	\$0	\$0	\$188,800	\$15,338	\$188,800	\$189,400
Licenses & Permits	\$0	\$0	\$0	\$0	\$0	\$0	\$0	\$0
Fines, Forfeits & Penalties	\$0	\$0	\$0	\$0	\$0	\$0	\$0	\$0
Public Charges for Services	\$220,671	\$205,900	\$0	\$0	\$205,900	\$94,362	\$228,172	\$176,400
Intergovernmental Charge for Services	\$0	\$0	\$0	\$0	\$0	\$0	\$0	\$0
Miscellaneous	\$45,504	\$30,000	\$0	\$0	\$30,000	\$4,607	\$30,000	\$30,000
Other Financing Sources	\$0	\$0	\$0	\$0	\$0	\$0	\$0	\$0
TOTAL	\$447,836	\$424,700	\$0	\$0	\$424,700	\$114,307	\$446,972	\$395,800
REV. OVER/(UNDER) EXPENSES	\$149,408	(\$93,500)			(\$113,500)			(\$74,500)
F.T.E. STAFF	0.500	0.500					0.500	0.500

Dept:	Alliant Energy Center of Dane County	92							Fund Name:	General Fund
Prgm:	Arena	514/00							Fund No.:	1110
DI#	2013 Base	Net Decision Items							2013 Adopted Budget	
		01	02	03	04	05	06	07		
PROGRAM EXPENSES										
Personal Services	\$155,300	\$200	\$300	\$0	\$0	\$0	(\$12,400)	\$0	\$143,400	
Operating Expenses	\$342,200	\$0	\$900	\$200	\$0	\$0	(\$30,600)	\$0	\$312,700	
Contractual Services	\$14,100	(\$200)	\$300	\$0	\$0	\$0	\$0	\$0	\$14,200	
Operating Capital	\$0	\$0	\$0	\$0	\$0	\$0	\$0	\$0	\$0	
TOTAL	\$511,600	\$0	\$1,500	\$200	\$0	\$0	(\$43,000)	\$0	\$470,300	
PROGRAM REVENUE										
Taxes	\$0	\$0	\$0	\$0	\$0	\$0	\$0	\$0	\$0	
Intergovernmental Revenue	\$189,100	\$300	\$0	\$0	\$0	\$0	\$0	\$0	\$189,400	
Licenses & Permits	\$0	\$0	\$0	\$0	\$0	\$0	\$0	\$0	\$0	
Fines, Forfeits & Penalties	\$0	\$0	\$0	\$0	\$0	\$0	\$0	\$0	\$0	
Public Charges for Services	\$205,900	\$8,400	\$4,800	\$0	\$0	\$300	(\$43,000)	\$0	\$176,400	
Intergovernmental Charge for Services	\$0	\$0	\$0	\$0	\$0	\$0	\$0	\$0	\$0	
Miscellaneous	\$30,000	\$0	\$0	\$0	\$0	\$0	\$0	\$0	\$30,000	
Other Financing Sources	\$0	\$0	\$0	\$0	\$0	\$0	\$0	\$0	\$0	
TOTAL	\$425,000	\$8,700	\$4,800	\$0	\$0	\$300	(\$43,000)	\$0	\$395,800	
REV. OVER/(UNDER) EXPENSES	(\$86,600)	\$8,700	\$3,300	(\$200)	\$0	\$300	\$0	\$0	(\$74,500)	
F.T.E. STAFF	0.500	0.000	0.000	0.000	0.000	0.000	0.000	0.000	0.500	

NARRATIVE INFORMATION ABOUT DECISION ITEMS SHOWN ABOVE		Expenditures	Revenue	Revenue Over/(Under) Expenses
2013 BUDGET BASE		\$511,600	\$425,000	(\$86,600)
DI #	AEC-ARNA-1 Event Changes			
DEPT	This decision item reflects the changes in the events that have occurred over the last year for 2012 and the projected changes for 2013.	(\$200)	\$8,700	\$8,900
EXEC	Approve as requested. Also, adjust retirement accounts to reflect the actual contribution rates that will be in effect for 2013.	\$200	\$0	(\$200)
ADOPTED	Approved as Recommended	\$0	\$0	\$0
NET DI # AEC-ARNA-1		\$0	\$8,700	\$8,700

Dept:	Alliant Energy Center of Dane County	92	Fund Name:	General Fund
Prgm:	Arena	514/00	Fund No.:	1110

NARRATIVE INFORMATION ABOUT DECISION ITEMS SHOWN ON PREVIOUS PAGE			Expenditures	Revenue	Revenue Over/(Under) Expenses
DI #	AEC-ARNA-2	Inflation			
DEPT	This decision item increases the rental rates 4% and rental equipment & electrical rates 4%, as well as increases selected operating and contractual expenses by 3%.		\$1,500	\$4,800	\$3,300
EXEC	Approved as Requested		\$0	\$0	\$0
ADOPTED	Approved as Recommended		\$0	\$0	\$0
NET DI # AEC-ARNA-2			\$1,500	\$4,800	\$3,300
DI #	AEC-ARNA-3	2012 Debt Service			
DEPT			\$0	\$0	\$0
EXEC	Increase expenditures to account for actual Debt Service on 2012 debt issuance.		\$200	\$0	(\$200)
ADOPTED	Approved as Recommended		\$0	\$0	\$0
NET DI # AEC-ARNA-3			\$200	\$0	(\$200)
DI #	AEC-ARNA-4	There is no Decision Item			
DEPT			\$0	\$0	\$0
EXEC			\$0	\$0	\$0
ADOPTED			\$0	\$0	\$0
NET DI # AEC-ARNA-4			\$0	\$0	\$0

Dept:	Alliant Energy Center of Dane County	92	Fund Name:	General Fund
Prgm:	Arena	514/00	Fund No.:	1110

NARRATIVE INFORMATION ABOUT DECISION ITEMS SHOWN ON PREVIOUS PAGE			Expenditures	Revenue	Revenue Over/(Under) Expenses
DI #	AEC-ARNA-5	Parking Fee Increase			
DEPT	This decision item increases the parking fee at the Center from \$6.00 per car to \$6.50 per car on July 1, 2013. The fee for buses increases from \$18.00 to \$19.50 and for multi-day passes from \$5.50 to \$6.00.		\$0	\$300	\$300
EXEC	Approved as Requested		\$0	\$0	\$0
ADOPTED	Approved as Recommended		\$0	\$0	\$0
NET DI # AEC-ARNA-5			\$0	\$300	\$300
DI #	AEC-ARNA-6	Arena Ice Sheet			
DEPT	This decision ends the rental of ice in the Arena building. The 2012 Budget included Arena ice rental for the first six months of the year. This decision reflects eliminating ice rental in the Arena for the entire year moving forward. The Arena will be made available for rent to flat shows that do not require class A exhibit space.		(\$43,000)	(\$43,000)	\$0
EXEC	Approved as Requested		\$0	\$0	\$0
ADOPTED	Approved as Recommended		\$0	\$0	\$0
NET DI # AEC-ARNA-6			(\$43,000)	(\$43,000)	\$0
2013 ADOPTED BUDGET			\$470,300	\$395,800	(\$74,500)

Dept:	Alliant Energy Center of Dane County	92	DANE COUNTY	Fund Name:	General Fund
Prgm:	Agricultural Exhibit Buildings	516/00		Fund No:	1110

Mission:

The Alliant Energy Center will effectively and efficiently meet the public assembly needs of all Dane County to do business, pursue recreation, be entertained, and otherwise gather for purposes positively beneficial to life in the County of Dane, WI.

Description:

The Agricultural Exhibit Buildings cost center identifies by category direct revenue and expenses for eight barns, one restroom/shower facility and the maintenance cost of asphalt surrounding these facilities. Activities and functions conducted in these facilities include consumer expositions, horse shows, livestock housing, shows and sales, trade shows and auctions. The facilities are rented as individual units for a specific function or in combination for larger events (attendance at World Dairy Expo, the Midwest Horse Fair, and the Dane County Fair exceeds 173,000 persons annually). These buildings serve in an ancillary role to the Arena, Exhibition Hall and Coliseum by providing important livestock exhibit space required by major events in those buildings.

	Actual 2011	Adopted 2012	2011 Carry Forward	Board Transfers	Budget As Modified	2012 YTD	Estimated 2012	Executive Recommended
PROGRAM EXPENSES								
Personal Services	\$186,002	\$179,200	\$0	\$0	\$179,200	\$8,220	\$70,966	\$187,400
Operating Expenses	\$110,839	\$129,400	\$0	\$0	\$129,400	\$17,190	\$145,634	\$121,600
Contractual Services	\$20,642	\$25,200	\$0	\$0	\$25,200	\$7,232	\$33,732	\$26,300
Operating Capital	\$0	\$0	\$20,000	\$0	\$20,000	\$0	\$20,000	\$0
TOTAL	\$317,483	\$333,800	\$20,000	\$0	\$353,800	\$32,641	\$270,332	\$335,300
PROGRAM REVENUE								
Taxes	\$0	\$0	\$0	\$0	\$0	\$0	\$0	\$0
Intergovernmental Revenue	\$784	\$500	\$0	\$0	\$500	\$0	\$500	\$800
Licenses & Permits	\$0	\$0	\$0	\$0	\$0	\$0	\$0	\$0
Fines, Forfeits & Penalties	\$0	\$0	\$0	\$0	\$0	\$0	\$0	\$0
Public Charges for Services	\$238,570	\$219,800	\$0	\$0	\$219,800	\$25,487	\$219,600	\$238,700
Intergovernmental Charge for Services	\$0	\$0	\$0	\$0	\$0	\$0	\$0	\$0
Miscellaneous	\$29,646	\$10,600	\$0	\$0	\$10,600	\$0	\$10,600	\$10,600
Other Financing Sources	\$0	\$0	\$0	\$0	\$0	\$0	\$0	\$0
TOTAL	\$268,999	\$230,900	\$0	\$0	\$230,900	\$25,487	\$230,700	\$250,100
REV. OVER/(UNDER) EXPENSES	(\$48,484)	(\$102,900)			(\$122,900)			(\$85,200)
F.T.E. STAFF	1.200	1.200					1.200	1.200

Dept:	Alliant Energy Center of Dane County	92							Fund Name:	General Fund
Prgm:	Agricultural Exhibit Buildings	516/00							Fund No.:	1110
DI#	2013 Base	Net Decision Items							2013 Adopted Budget	
		01	02	03	04	05	06	07		
PROGRAM EXPENSES										
Personal Services	\$185,400	\$700	\$1,300	\$0	\$0	\$0	\$0	\$0	\$187,400	
Operating Expenses	\$119,800	\$0	\$1,400	\$400	\$0	\$0	\$0	\$0	\$121,600	
Contractual Services	\$26,000	\$0	\$300	\$0	\$0	\$0	\$0	\$0	\$26,300	
Operating Capital	\$0	\$0	\$0	\$0	\$0	\$0	\$0	\$0	\$0	
TOTAL	\$331,200	\$700	\$3,000	\$400	\$0	\$0	\$0	\$0	\$335,300	
PROGRAM REVENUE										
Taxes	\$0	\$0	\$0	\$0	\$0	\$0	\$0	\$0	\$0	
Intergovernmental Revenue	\$800	\$0	\$0	\$0	\$0	\$0	\$0	\$0	\$800	
Licenses & Permits	\$0	\$0	\$0	\$0	\$0	\$0	\$0	\$0	\$0	
Fines, Forfeits & Penalties	\$0	\$0	\$0	\$0	\$0	\$0	\$0	\$0	\$0	
Public Charges for Services	\$219,800	\$10,000	\$7,500	\$0	\$0	\$1,400	\$0	\$0	\$238,700	
Intergovernmental Charge for Services	\$0	\$0	\$0	\$0	\$0	\$0	\$0	\$0	\$0	
Miscellaneous	\$10,600	\$0	\$0	\$0	\$0	\$0	\$0	\$0	\$10,600	
Other Financing Sources	\$0	\$0	\$0	\$0	\$0	\$0	\$0	\$0	\$0	
TOTAL	\$231,200	\$10,000	\$7,500	\$0	\$0	\$1,400	\$0	\$0	\$250,100	
REV. OVER/(UNDER) EXPENSES	(\$100,000)	\$9,300	\$4,500	(\$400)	\$0	\$1,400	\$0	\$0	(\$85,200)	
F.T.E. STAFF	1.200	0.000	0.000	0.000	0.000	0.000	0.000	0.000	1.200	

NARRATIVE INFORMATION ABOUT DECISION ITEMS SHOWN ABOVE		Expenditures	Revenue	Revenue Over/(Under) Expenses
2013 BUDGET BASE		\$331,200	\$231,200	(\$100,000)
DI #	AEC-AGRI-1 Event Changes			
DEPT	This decision item reflects the changes in the events that have occurred over the last year for 2012 and the projected changes for 2013.	\$0	\$10,000	\$10,000
EXEC	Approve as requested. Also, adjust retirement accounts to reflect the actual contribution rates that will be in effect for 2013.	\$700	\$0	(\$700)
ADOPTED	Approved as Recommended	\$0	\$0	\$0
NET DI # AEC-AGRI-1		\$700	\$10,000	\$9,300

Dept:	Alliant Energy Center of Dane County	92	Fund Name:	General Fund
Prgm:	Agricultural Exhibit Buildings	516/00	Fund No.:	1110

NARRATIVE INFORMATION ABOUT DECISION ITEMS SHOWN ON PREVIOUS PAGE			Expenditures	Revenue	Revenue Over/(Under) Expenses
DI #	AEC-AGRI-2	Inflation			
DEPT	This decision item increases the rental rates 4% and rental equipment & electrical rates 4%, as well as increases selected operating and contractual expenses by 3%.		\$3,000	\$7,500	\$4,500
EXEC	Approved as Requested		\$0	\$0	\$0
ADOPTED	Approved as Recommended		\$0	\$0	\$0
NET DI # AEC-AGRI-2			\$3,000	\$7,500	\$4,500
DI #	AEC-AGRI-3	2012 Debt Service			
DEPT			\$0	\$0	\$0
EXEC	Increase expenditures to account for actual Debt Service on 2012 debt issuance.		\$400	\$0	(\$400)
ADOPTED	Approved as Recommended		\$0	\$0	\$0
NET DI # AEC-AGRI-3			\$400	\$0	(\$400)
DI #	AEC-AGRI-4	There is no Decision Item			
DEPT			\$0	\$0	\$0
EXEC			\$0	\$0	\$0
ADOPTED			\$0	\$0	\$0
NET DI # AEC-AGRI-4			\$0	\$0	\$0

Dept:	Alliant Energy Center of Dane County	92	Fund Name:	General Fund
Prgm:	Agricultural Exhibit Buildings	516/00	Fund No.:	1110

NARRATIVE INFORMATION ABOUT DECISION ITEMS SHOWN ON PREVIOUS PAGE			Expenditures	Revenue	Revenue Over/(Under) Expenses
DI #	AEC-AGRI-5	Parking Fee Increase			
DEPT	This decision item increases the parking fee at the Center from \$6.00 per car to \$6.50 per car on July 1, 2013. The fee for buses increases from \$18.00 to \$19.50 and for multi-day passes from \$5.50 to \$6.00.		\$0	\$1,400	\$1,400
EXEC	Approved as Requested		\$0	\$0	\$0
ADOPTED	Approved as Recommended		\$0	\$0	\$0
	NET DI #	AEC-AGRI-5	\$0	\$1,400	\$1,400

--	--	--	--	--	--

2013 ADOPTED BUDGET	\$335,300	\$250,100	(\$85,200)
----------------------------	-----------	-----------	------------

Dept:	Alliant Energy Center of Dane County	92	DANE COUNTY	Fund Name:	General Fund
Prgm:	Parking Lots	518/00		Fund No:	1110

Mission:

The Alliant Energy Center will effectively and efficiently meet the public assembly needs of all Dane County to do business, pursue recreation, be entertained, and otherwise gather for purposes positively beneficial to life in the County of Dane, WI.

Description:

The Parking Lots cost center identifies by category revenue for approximately 36 acres of land with 5,500 parking stalls, connecting roadways and walkways. Much of the area is asphalt or concrete paved to assist in attendees ingress and egress of events at the Coliseum, Exhibition Hall, Conference Center, Arena, and Willow Island. Events which have utilized Parking Lots for programming include World Dairy Expo, Dane County Fair, RV Shows, Americruise, Family Motor Coach, Goldwing, Good Sam Club, car and boat sales, and custom car shows.

	Actual 2011	Adopted 2012	2011 Carry Forward	Board Transfers	Budget As Modified	2012 YTD	Estimated 2012	Executive Recommended
PROGRAM EXPENSES								
Personal Services	\$100,323	\$73,600	\$0	\$0	\$73,600	\$16,010	\$49,951	\$88,500
Operating Expenses	\$115,416	\$184,300	\$0	\$0	\$184,300	\$14,701	\$174,068	\$170,450
Contractual Services	\$20,310	\$19,900	\$0	\$0	\$19,900	\$6,421	\$22,827	\$41,100
Operating Capital	\$0	\$0	\$30,000	\$0	\$30,000	\$0	\$30,000	\$0
TOTAL	\$236,049	\$277,800	\$30,000	\$0	\$307,800	\$37,132	\$276,846	\$300,050
PROGRAM REVENUE								
Taxes	\$0	\$0	\$0	\$0	\$0	\$0	\$0	\$0
Intergovernmental Revenue	\$579	\$900	\$0	\$0	\$900	\$0	\$900	\$600
Licenses & Permits	\$0	\$0	\$0	\$0	\$0	\$0	\$0	\$0
Fines, Forfeits & Penalties	\$0	\$0	\$0	\$0	\$0	\$0	\$0	\$0
Public Charges for Services	\$125,238	\$34,500	\$0	\$0	\$34,500	\$22,220	\$36,050	\$57,900
Intergovernmental Charge for Services	\$0	\$0	\$0	\$0	\$0	\$0	\$0	\$0
Miscellaneous	\$9,409	\$3,900	\$0	\$0	\$3,900	\$2,072	\$3,900	\$3,900
Other Financing Sources	\$0	\$0	\$0	\$0	\$0	\$0	\$0	\$0
TOTAL	\$135,226	\$39,300	\$0	\$0	\$39,300	\$24,293	\$40,850	\$62,400
REV. OVER/(UNDER) EXPENSES	(\$100,822)	(\$238,500)			(\$268,500)			(\$237,650)
F.T.E. STAFF	0.300	0.300					0.300	0.300

Dept:	Alliant Energy Center of Dane County	92							Fund Name:	General Fund
Prgm:	Parking Lots	518/00							Fund No.:	1110
	2013	Net Decision Items							2013 Adopted	
DI#	Base	01	02	03	04	05	06	07	Budget	
PROGRAM EXPENSES										
Personal Services	\$87,600	\$300	\$600	\$0	\$0	\$0	\$0	\$0	\$88,500	
Operating Expenses	\$165,800	\$350	\$400	\$3,900	\$0	\$0	\$0	\$0	\$170,450	
Contractual Services	\$22,000	\$0	\$100	\$19,000	\$0	\$0	\$0	\$0	\$41,100	
Operating Capital	\$0	\$0	\$0	\$0	\$0	\$0	\$0	\$0	\$0	
TOTAL	\$275,400	\$650	\$1,100	\$22,900	\$0	\$0	\$0	\$0	\$300,050	
PROGRAM REVENUE										
Taxes	\$0	\$0	\$0	\$0	\$0	\$0	\$0	\$0	\$0	
Intergovernmental Revenue	\$600	\$0	\$0	\$0	\$0	\$0	\$0	\$0	\$600	
Licenses & Permits	\$0	\$0	\$0	\$0	\$0	\$0	\$0	\$0	\$0	
Fines, Forfeits & Penalties	\$0	\$0	\$0	\$0	\$0	\$0	\$0	\$0	\$0	
Public Charges for Services	\$34,500	\$0	\$100	\$22,900	\$0	\$400	\$0	\$0	\$57,900	
Intergovernmental Charge for Services	\$0	\$0	\$0	\$0	\$0	\$0	\$0	\$0	\$0	
Miscellaneous	\$3,900	\$0	\$0	\$0	\$0	\$0	\$0	\$0	\$3,900	
Other Financing Sources	\$0	\$0	\$0	\$0	\$0	\$0	\$0	\$0	\$0	
TOTAL	\$39,000	\$0	\$100	\$22,900	\$0	\$400	\$0	\$0	\$62,400	
REV. OVER/(UNDER) EXPENSES	(\$236,400)	(\$650)	(\$1,000)	\$0	\$0	\$400	\$0	\$0	(\$237,650)	
F.T.E. STAFF	0.300	0.000	0.000	0.000	0.000	0.000	0.000	0.000	0.300	

NARRATIVE INFORMATION ABOUT DECISION ITEMS SHOWN ABOVE		Expenditures	Revenue	Revenue Over/(Under) Expenses
2013 BUDGET BASE		\$275,400	\$39,000	(\$236,400)
DI #	AEC-PARK-1			
DEPT	WRS Rate Adjustment	\$0	\$0	\$0
EXEC	Adjust retirement accounts to reflect the actual contribution rates that will be in effect for 2013. Also, increase expenditures to account for actual Debt Service on 2012 debt issuance.	\$650	\$0	(\$650)
ADOPTED	Approved as Recommended	\$0	\$0	\$0
NET DI # AEC-PARK-1		\$650	\$0	(\$650)

Dept:	Alliant Energy Center of Dane County	92	Fund Name:	General Fund
Prgm:	Parking Lots	518/00	Fund No.:	1110

NARRATIVE INFORMATION ABOUT DECISION ITEMS SHOWN ON PREVIOUS PAGE			Expenditures	Revenue	Revenue Over/(Under) Expenses
DI #	AEC-PARK-2	Inflation			
DEPT	This decision item increases the rental rates 4% and rental equipment & electrical rates 4%, as well as increases selected operating and contractual expenses by 3%.		\$1,100	\$100	(\$1,000)
EXEC	Approved as Requested		\$0	\$0	\$0
ADOPTED	Approved as Recommended		\$0	\$0	\$0
NET DI # AEC-PARK-2			\$1,100	\$100	(\$1,000)
DI #	AEC-PARK-3	Traffic Control			
DEPT	This decision item adds funding for the operating costs of a traffic light being installed at the Center's main gate and for traffic control services being provided by the Dane County Sheriff's Office. The Center intends to pass on these charges to the events that require traffic control.		\$22,900	\$22,900	\$0
EXEC	Approved as Requested		\$0	\$0	\$0
ADOPTED	Approved as Recommended		\$0	\$0	\$0
NET DI # AEC-PARK-3			\$22,900	\$22,900	\$0
DI #	AEC-PARK-4	There is no Decision Item			
DEPT			\$0	\$0	\$0
EXEC			\$0	\$0	\$0
ADOPTED			\$0	\$0	\$0
NET DI # AEC-PARK-4			\$0	\$0	\$0

Dept:	Alliant Energy Center of Dane County	92	Fund Name:	General Fund
Prgm:	Parking Lots	518/00	Fund No.:	1110

NARRATIVE INFORMATION ABOUT DECISION ITEMS SHOWN ON PREVIOUS PAGE			Expenditures	Revenue	Revenue Over/(Under) Expenses
DI #	AEC-PARK-5	Parking Fee Increase			
DEPT	This decision item increases the parking fee at the Center from \$6.00 per car to \$6.50 per car on July 1, 2013. The fee for buses increases from \$18.00 to \$19.50 and for multi-day passes from \$5.50 to \$6.00.		\$0	\$400	\$400
EXEC	Approved as Requested		\$0	\$0	\$0
ADOPTED	Approved as Recommended		\$0	\$0	\$0
	NET DI #	AEC-PARK-5	\$0	\$400	\$400

--	--	--	--	--	--

2013 ADOPTED BUDGET	\$300,050	\$62,400	(\$237,650)
----------------------------	-----------	----------	-------------

Dept:	Alliant Energy Center of Dane County	92	DANE COUNTY	Fund Name:	General Fund
Prgm:	Landscape Areas	520/00		Fund No:	1110

Mission:

The Alliant Energy Center will effectively and efficiently meet the public assembly needs of all Dane County to do business, pursue recreation, be entertained, and otherwise gather for purposes positively beneficial to life in the County of Dane, WI.

Description:

The Landscape Areas cost center identifies by category direct revenue and expenses for the general upkeep and maintenance of approximately 120 acres of park surrounding the Parking Lots. This includes Rimrock Greenway, Willow Island, ponds, Lyckberg Park, Quann Park and the outdoor event marquee. Portions of this land are held for potential expansion of the Center. This area is used by Dane County Fair, company picnics,, Komen Race for the Cure, horse shows, Goldwing, Bratfest, World Dairy Expo, festivals and entertainment events.

	Actual 2011	Adopted 2012	2011 Carry Forward	Board Transfers	Budget As Modified	2012 YTD	Estimated 2012	Executive Recommended
PROGRAM EXPENSES								
Personal Services	\$91,766	\$64,100	\$0	\$0	\$64,100	\$16,679	\$39,867	\$84,400
Operating Expenses	\$44,077	\$80,600	\$0	\$0	\$80,600	\$7,702	\$72,940	\$82,450
Contractual Services	\$148,595	\$115,600	\$0	\$0	\$115,600	\$2,221	\$118,527	\$110,900
Operating Capital	\$0	\$0	\$5,000	\$0	\$5,000	\$0	\$5,000	\$0
TOTAL	\$284,438	\$260,300	\$5,000	\$0	\$265,300	\$26,602	\$236,334	\$277,750
PROGRAM REVENUE								
Taxes	\$0	\$0	\$0	\$0	\$0	\$0	\$0	\$0
Intergovernmental Revenue	\$802	\$500	\$0	\$0	\$500	\$0	\$500	\$800
Licenses & Permits	\$0	\$0	\$0	\$0	\$0	\$0	\$0	\$0
Fines, Forfeits & Penalties	\$0	\$0	\$0	\$0	\$0	\$0	\$0	\$0
Public Charges for Services	\$502,726	\$491,900	\$0	\$0	\$491,900	\$65,443	\$446,315	\$448,300
Intergovernmental Charge for Services	\$0	\$0	\$0	\$0	\$0	\$0	\$0	\$0
Miscellaneous	\$46,888	\$37,900	\$0	\$0	\$37,900	\$200	\$37,900	\$37,900
Other Financing Sources	\$0	\$0	\$0	\$0	\$0	\$0	\$0	\$0
TOTAL	\$550,416	\$530,300	\$0	\$0	\$530,300	\$65,643	\$484,715	\$487,000
REV. OVER/(UNDER) EXPENSES	\$265,978	\$270,000			\$265,000			\$209,250
F.T.E. STAFF	0.500	0.500					0.500	0.500

Dept:	Alliant Energy Center of Dane County	92							Fund Name:	General Fund
Prgm:	Landscape Areas	520/00							Fund No.:	1110
DI#	2013 Base	Net Decision Items							2013 Adopted Budget	
		01	02	03	04	05	06	07		
PROGRAM EXPENSES										
Personal Services	\$73,000	\$200	\$1,200	\$0	\$10,000	\$0	\$0	\$0	\$84,400	
Operating Expenses	\$81,600	\$0	\$500	\$350	\$0	\$0	\$0	\$0	\$82,450	
Contractual Services	\$115,800	(\$5,000)	\$100	\$0	\$0	\$0	\$0	\$0	\$110,900	
Operating Capital	\$0	\$0	\$0	\$0	\$0	\$0	\$0	\$0	\$0	
TOTAL	\$270,400	(\$4,800)	\$1,800	\$350	\$10,000	\$0	\$0	\$0	\$277,750	
PROGRAM REVENUE										
Taxes	\$0	\$0	\$0	\$0	\$0	\$0	\$0	\$0	\$0	
Intergovernmental Revenue	\$800	\$0	\$0	\$0	\$0	\$0	\$0	\$0	\$800	
Licenses & Permits	\$0	\$0	\$0	\$0	\$0	\$0	\$0	\$0	\$0	
Fines, Forfeits & Penalties	\$0	\$0	\$0	\$0	\$0	\$0	\$0	\$0	\$0	
Public Charges for Services	\$491,900	(\$48,200)	\$2,700	\$0	\$0	\$1,900	\$0	\$0	\$448,300	
Intergovernmental Charge for Services	\$0	\$0	\$0	\$0	\$0	\$0	\$0	\$0	\$0	
Miscellaneous	\$37,900	\$0	\$0	\$0	\$0	\$0	\$0	\$0	\$37,900	
Other Financing Sources	\$0	\$0	\$0	\$0	\$0	\$0	\$0	\$0	\$0	
TOTAL	\$530,600	(\$48,200)	\$2,700	\$0	\$0	\$1,900	\$0	\$0	\$487,000	
REV. OVER/(UNDER) EXPENSES	\$260,200	(\$43,400)	\$900	(\$350)	(\$10,000)	\$1,900	\$0	\$0	\$209,250	
F.T.E. STAFF	0.500	0.000	0.000	0.000	0.000	0.000	0.000	0.000	0.500	

NARRATIVE INFORMATION ABOUT DECISION ITEMS SHOWN ABOVE			Expenditures	Revenue	Revenue Over/(Under) Expenses
2013 BUDGET BASE			\$270,400	\$530,600	\$260,200
DI #	AEC-LAND-1	Event Changes			
DEPT	This decision item reflects the changes in the events that have occurred over the last year for 2012 and the projected changes for 2013.		(\$5,000)	(\$48,200)	(\$43,200)
EXEC	Approve as requested. Also, adjust retirement accounts to reflect the actual contribution rates that will be in effect for 2013.		\$200	\$0	(\$200)
ADOPTED	Approved as Recommended		\$0	\$0	\$0
NET DI # AEC-LAND-1			(\$4,800)	(\$48,200)	(\$43,400)

Dept:	Alliant Energy Center of Dane County	92	Fund Name:	General Fund
Prgm:	Landscape Areas	520/00	Fund No.:	1110

NARRATIVE INFORMATION ABOUT DECISION ITEMS SHOWN ON PREVIOUS PAGE			Expenditures	Revenue	Revenue Over/(Under) Expenses
DI #	AEC-LAND-2	Inflation			
DEPT	This decision item increases the rental rates 4% and rental equipment & electrical rates 4%, as well as increases selected operating and contractual expenses by 3%.		\$1,800	\$2,700	\$900
EXEC	Approved as Requested		\$0	\$0	\$0
ADOPTED	Approved as Recommended		\$0	\$0	\$0
NET DI # AEC-LAND-2			\$1,800	\$2,700	\$900
DI #	AEC-LAND-3	2012 Debt Service			
DEPT			\$0	\$0	\$0
EXEC	Increase expenditures to account for actual Debt Service on 2012 debt issuance.		\$350	\$0	(\$350)
ADOPTED	Approved as Recommended		\$0	\$0	\$0
NET DI # AEC-LAND-3			\$350	\$0	(\$350)
DI #	AEC-LAND-4	Position Changes			
DEPT	This decision makes several staff changes to reduce the Center's ongoing operating costs and help stabilize the Center's financial condition.		\$10,000	\$0	(\$10,000)
EXEC	Approved as Requested		\$0	\$0	\$0
ADOPTED	Approved as Recommended		\$0	\$0	\$0
NET DI # AEC-LAND-4			\$10,000	\$0	(\$10,000)

Dept:	Alliant Energy Center of Dane County	92	Fund Name:	General Fund
Prgm:	Landscape Areas	520/00	Fund No.:	1110

NARRATIVE INFORMATION ABOUT DECISION ITEMS SHOWN ON PREVIOUS PAGE		Expenditures	Revenue	Revenue Over/(Under) Expenses
DI #	AEC-LAND-5 Parking Fee Increase			
DEPT	This decision item increases the parking fee at the Center from \$6.00 per car to \$6.50 per car on July 1, 2013. The fee for buses increases from \$18.00 to \$19.50 and for multi-day passes from \$5.50 to \$6.00.	\$0	\$1,900	\$1,900
EXEC	Approved as Requested	\$0	\$0	\$0
ADOPTED	Approved as Recommended	\$0	\$0	\$0
	NET DI # AEC-LAND-5	\$0	\$1,900	\$1,900

--	--	--	--	--

2013 ADOPTED BUDGET	\$277,750	\$487,000	\$209,250
----------------------------	-----------	-----------	-----------

Dept:	Miscellaneous Appropriations	27	DANE COUNTY	Fund Name:	General Fund
Prgm:	Subsidized AEC Events	129/00		Fund No:	1110

Mission:

To provide a wide variety of events that focus on youth, community, health, county-wide employment, the dairy and agriculture industries, the environment, veterans and other aspects of the community of benefit to county residents and visitors from all over the world.

Description:

Many events of benefit to the entire community cannot afford the full cost of the facilities at the Alliant Energy Center. The County Board and County Executive, through resolutions or budgets, have identified specific events for which the County General Fund pays a portion of the Alliant Energy Center fees.

	Actual 2011	Adopted 2012	2011 Carry Forward	Board Transfers	Budget As Modified	2012 YTD	Estimated 2012	Executive Recommended
PROGRAM EXPENDITURES								
Personal Services	\$0	\$0	\$0	\$0	\$0	\$0	\$0	\$0
Operating Expenses	\$61,672	\$59,719	\$0	\$0	\$59,719	\$22,280	\$59,719	\$59,122
Contractual Services	\$0	\$0	\$0	\$0	\$0	\$0	\$0	\$0
Operating Capital	\$0	\$0	\$0	\$0	\$0	\$0	\$0	\$0
TOTAL	\$61,672	\$59,719	\$0	\$0	\$59,719	\$22,280	\$59,719	\$59,122
PROGRAM REVENUE								
Taxes	\$0	\$0	\$0	\$0	\$0	\$0	\$0	\$0
Intergovernmental Revenue	\$0	\$0	\$0	\$0	\$0	\$0	\$0	\$0
Licenses & Permits	\$0	\$0	\$0	\$0	\$0	\$0	\$0	\$0
Fines, Forfeits & Penalties	\$0	\$0	\$0	\$0	\$0	\$0	\$0	\$0
Public Charges for Services	\$0	\$0	\$0	\$0	\$0	\$0	\$0	\$0
Intergovernmental Charge for Services	\$0	\$0	\$0	\$0	\$0	\$0	\$0	\$0
Miscellaneous	\$0	\$0	\$0	\$0	\$0	\$0	\$0	\$0
Other Financing Sources	\$0	\$0	\$0	\$0	\$0	\$0	\$0	\$0
TOTAL	\$0	\$0	\$0	\$0	\$0	\$0	\$0	\$0
GPR SUPPORT	\$61,672	\$59,719			\$59,719			\$59,122
F.T.E. STAFF	0.000	0.000					0.000	0.000

Dept: Miscellaneous Appropriations	27								Fund Name: General Fund
Prgm: Subsidized AEC Events	129/00								Fund No.: 1110
DI#	2013 Base	Net Decision Items							2013 Adopted Budget
		01	02	03	04	05	06	07	
PROGRAM EXPENDITURES									
Personal Services	\$0	\$0	\$0	\$0	\$0	\$0	\$0	\$0	\$0
Operating Expenses	\$59,719	(\$597)	\$0	\$0	\$0	\$0	\$0	\$0	\$59,122
Contractual Services	\$0	\$0	\$0	\$0	\$0	\$0	\$0	\$0	\$0
Operating Capital	\$0	\$0	\$0	\$0	\$0	\$0	\$0	\$0	\$0
TOTAL	\$59,719	(\$597)	\$0	\$0	\$0	\$0	\$0	\$0	\$59,122
PROGRAM REVENUE									
Taxes	\$0	\$0	\$0	\$0	\$0	\$0	\$0	\$0	\$0
Intergovernmental Revenue	\$0	\$0	\$0	\$0	\$0	\$0	\$0	\$0	\$0
Licenses & Permits	\$0	\$0	\$0	\$0	\$0	\$0	\$0	\$0	\$0
Fines, Forfeits & Penalties	\$0	\$0	\$0	\$0	\$0	\$0	\$0	\$0	\$0
Public Charges for Services	\$0	\$0	\$0	\$0	\$0	\$0	\$0	\$0	\$0
Intergovernmental Charge for Services	\$0	\$0	\$0	\$0	\$0	\$0	\$0	\$0	\$0
Miscellaneous	\$0	\$0	\$0	\$0	\$0	\$0	\$0	\$0	\$0
Other Financing Sources	\$0	\$0	\$0	\$0	\$0	\$0	\$0	\$0	\$0
TOTAL	\$0	\$0	\$0	\$0	\$0	\$0	\$0	\$0	\$0
GPR SUPPORT	\$59,719	(\$597)	\$0	\$0	\$0	\$0	\$0	\$0	\$59,122
F.T.E. STAFF	0.000	0.000	0.000	0.000	0.000	0.000	0.000	0.000	0.000

NARRATIVE INFORMATION ABOUT DECISION ITEMS SHOWN ABOVE		Expenditures	Revenue	GPR Support
2013 BUDGET BASE		\$59,719	\$0	\$59,719
DI #	AEC-SUBE-1 Civic Events Reduction			
DEPT	A 1% reduction in the Civic Events account to meet the County Executive's 2013 Budget Guidelines.	(\$597)	\$0	(\$597)
EXEC	Approved as Requested	\$0	\$0	\$0
ADOPTED	Approved as Recommended	\$0	\$0	\$0
NET DI # AEC-SUBE-1		(\$597)	\$0	(\$597)
2013 ADOPTED BUDGET		\$59,122	\$0	\$59,122