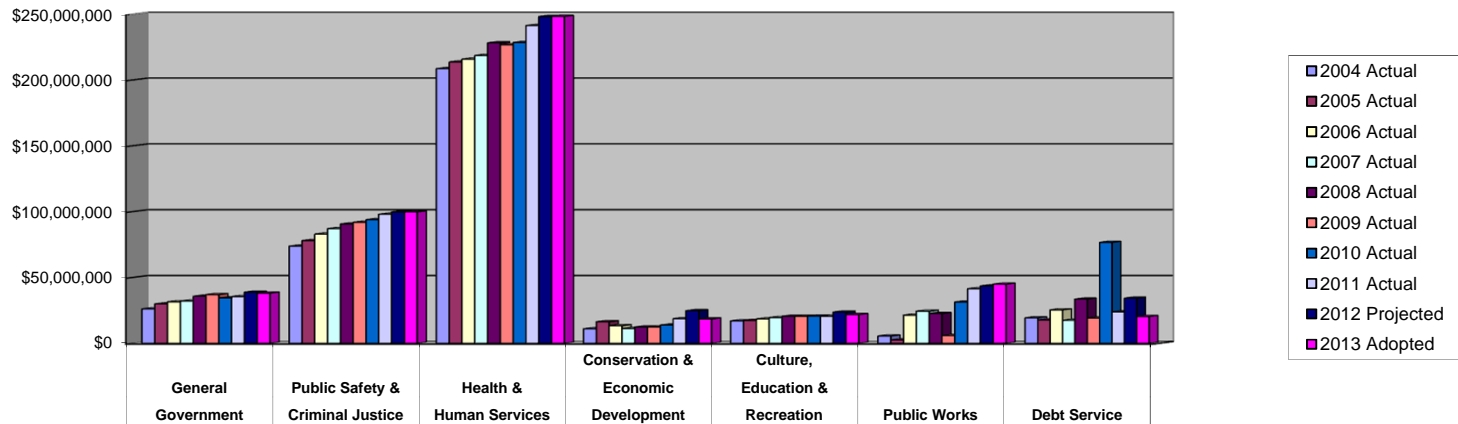


V. STATISTICAL & SUPPLEMENTAL DATA

COUNTY OF DANE
OPERATING EXPENDITURES BY ACTIVITY
LAST TEN FISCAL YEARS

Fiscal Year	General Government	Public Safety & Criminal Justice	Health & Human Services	Conservation & Economic Development	Culture, Education & Recreation	Public Works	Debt Service	Total
2004 Actual	\$26,127,131	\$73,751,722	\$208,565,761	\$11,032,578	\$17,058,636	\$5,573,155	\$19,326,930	\$361,435,913
2005 Actual	\$29,885,669	\$77,993,688	\$213,692,548	\$16,383,652	\$17,398,303	\$2,480,412	\$17,681,156	\$375,515,428
2006 Actual	\$31,498,079	\$82,928,993	\$215,819,208	\$13,377,770	\$18,476,576	\$21,384,037	\$25,372,272	\$408,856,935
2007 Actual	\$32,104,652	\$87,078,390	\$218,597,435	\$11,174,896	\$19,532,536	\$24,367,767	\$17,416,794	\$410,272,470
2008 Actual	\$35,707,767	\$90,639,939	\$228,186,914	\$12,369,639	\$20,538,466	\$22,595,206	\$33,536,844	\$443,574,775
2009 Actual	\$36,999,352	\$91,896,024	\$226,806,179	\$12,281,626	\$20,424,367	\$5,800,932	\$19,233,693	\$413,442,173
2010 Actual	\$34,385,455	\$93,883,954	\$228,473,259	\$13,805,682	\$20,639,422	\$31,361,372	\$76,644,593	\$499,193,737
2011 Actual	\$35,510,656	\$97,986,341	\$241,295,333	\$18,709,250	\$20,416,734	\$41,407,696	\$23,754,813	\$479,080,823
2012 Projected	\$38,824,478	\$99,776,745	\$248,214,258	\$24,755,008	\$23,717,538	\$43,569,832	\$34,271,835	\$513,129,694
2013 Adopted	\$38,120,210	\$99,831,948	\$248,305,204	\$18,463,171	\$21,846,037	\$44,899,825	\$20,395,300	\$491,861,695

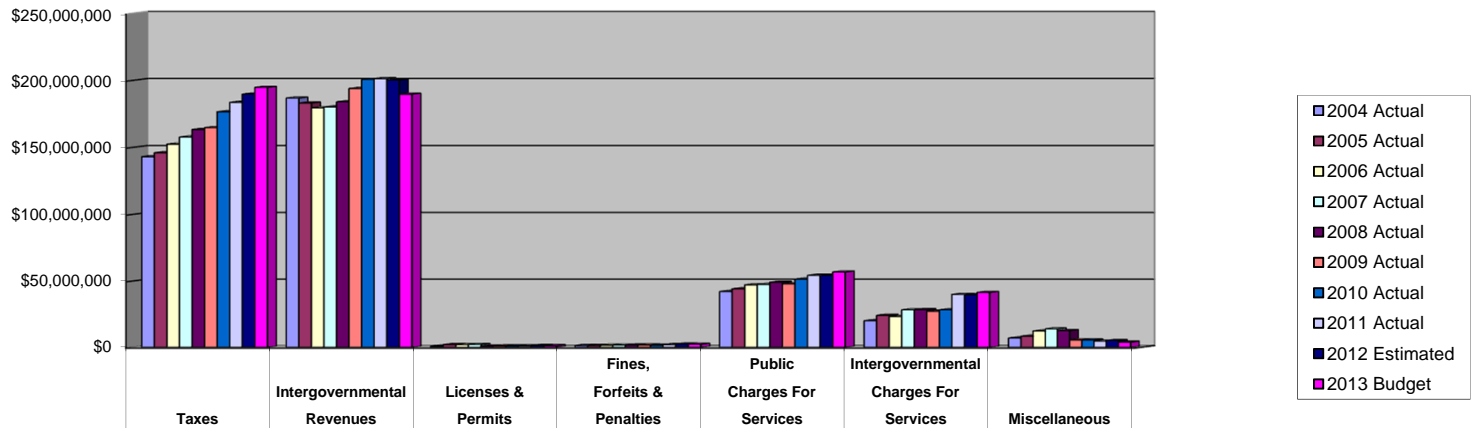
Operating Expenditures by Activity



**COUNTY OF DANE
OPERATING REVENUES BY SOURCE
LAST TEN FISCAL YEARS**

Fiscal Year	Taxes	Intergovernmental Revenues	Licenses & Permits	Fines, Forfeits & Penalties	Public Charges For Services	Intergovernmental Charges For Services	Miscellaneous	Total
2004 Actual	\$143,089,242	\$186,807,528	\$934,402	\$1,501,055	\$42,092,591	\$20,098,003	\$7,053,057	\$401,575,878
2005 Actual	\$146,018,109	\$183,121,488	\$2,126,627	\$1,503,912	\$44,151,238	\$24,167,358	\$8,412,565	\$409,501,297
2006 Actual	\$152,413,028	\$179,445,465	\$2,035,572	\$1,688,358	\$47,084,647	\$23,284,160	\$12,327,847	\$418,279,077
2007 Actual	\$157,752,877	\$180,140,406	\$2,206,461	\$1,692,128	\$47,414,657	\$28,307,189	\$13,942,242	\$431,455,960
2008 Actual	\$163,365,445	\$184,021,741	\$1,055,297	\$1,740,753	\$49,092,187	\$28,442,870	\$12,604,309	\$440,322,602
2009 Actual	\$164,720,709	\$193,934,710	\$1,089,918	\$1,826,952	\$47,918,796	\$27,232,318	\$5,649,650	\$442,373,053
2010 Actual	\$176,569,804	\$200,736,094	\$1,110,340	\$1,596,423	\$51,419,450	\$28,321,752	\$5,632,166	\$465,386,029
2011 Actual	\$183,597,854	\$201,305,796	\$1,091,107	\$2,087,054	\$54,307,199	\$39,879,646	\$4,699,947	\$486,968,603
2012 Estimated	\$189,751,119	\$200,266,816	\$1,413,355	\$2,505,387	\$54,339,251	\$39,702,915	\$5,208,590	\$493,187,433
2013 Budget	\$194,826,314	\$189,727,084	\$1,327,290	\$2,391,000	\$56,770,449	\$41,406,847	\$3,921,040	\$490,370,024

Operating Revenues by Source



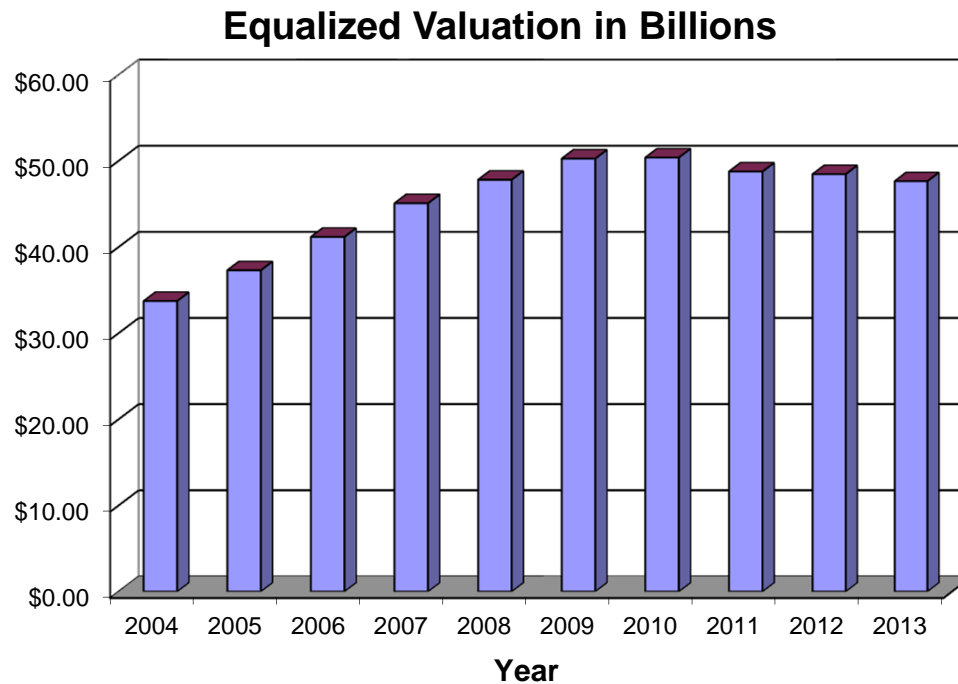
**Dane County
Equalized Valuation (A)**

District	2011		2012	
	Rec. Value All Property	Ratio	Rec. Value All Property	Ratio
Towns				
Albion	\$206,532,800	0.00426	\$199,326,100	0.00418
Berry	\$181,006,800	0.00374	\$183,053,100	0.00384
Black Earth	\$70,877,200	0.00146	\$72,540,100	0.00152
Blooming Grove	\$180,130,600	0.00372	\$184,680,800	0.00388
Blue Mounds	\$123,448,400	0.00255	\$124,783,200	0.00262
Bristol	\$394,130,600	0.00813	\$384,550,100	0.00807
Burke	\$437,105,700	0.00902	\$437,455,400	0.00918
Christiana	\$125,956,300	0.00260	\$122,858,300	0.00258
Cottage Grove	\$383,620,900	0.00792	\$374,681,700	0.00787
Cross Plains	\$233,551,900	0.00482	\$225,828,200	0.00474
Dane	\$113,840,200	0.00235	\$115,302,600	0.00242
Deerfield	\$170,174,300	0.00351	\$165,771,600	0.00348
Dunkirk	\$190,587,700	0.00393	\$188,489,800	0.00396
Dunn	\$703,029,800	0.01451	\$635,025,400	0.01333
Madison	\$378,998,500	0.00782	\$357,938,100	0.00751
Mazomanie	\$114,295,300	0.00236	\$113,245,400	0.00238
Medina	\$137,645,800	0.00284	\$135,364,500	0.00284
Middleton	\$1,015,601,600	0.02096	\$1,029,465,800	0.02161
Montrose	\$120,599,900	0.00249	\$123,712,000	0.00260
Oregon	\$367,145,600	0.00758	\$358,439,200	0.00753
Perry	\$77,662,700	0.00160	\$77,630,800	0.00163
Pleasant Springs	\$462,954,100	0.00955	\$435,841,700	0.00915
Primrose	\$81,646,600	0.00169	\$84,682,100	0.00178
Roxbury	\$201,086,700	0.00415	\$203,723,300	0.00428
Rutland	\$244,916,200	0.00505	\$239,182,400	0.00502
Springdale	\$296,985,200	0.00613	\$284,518,600	0.00597
Springfield	\$371,868,400	0.00767	\$384,005,800	0.00806
Sun Prairie	\$258,917,100	0.00534	\$249,567,000	0.00524
Vermont	\$130,532,600	0.00269	\$137,662,100	0.00289
Verona	\$286,628,100	0.00592	\$275,817,600	0.00579
Vienna	\$208,897,500	0.00431	\$219,726,300	0.00461
Westport	\$717,109,700	0.01480	\$757,604,200	0.01591
Windsor	\$578,386,500	0.01194	\$553,643,100	0.01162
York	\$77,533,900	0.00160	\$76,171,300	0.00160
Total for Towns	\$9,643,405,200	0.19902	\$9,512,287,700	0.19970

District	2011		2012	
	Rec. Value All Property	Ratio	Rec. Value All Property	Ratio
Villages				
Belleville	\$152,231,100	0.00314	\$143,022,900	0.00300
Black Earth	\$97,569,500	0.00201	\$93,277,200	0.00196
Blue Mounds	\$44,175,000	0.00091	\$42,309,300	0.00089
Brooklyn	\$60,884,000	0.00126	\$61,756,000	0.00130
Cambridge	\$135,226,400	0.00279	\$130,560,700	0.00274
Cottage Grove	\$543,965,900	0.01123	\$534,016,700	0.01121
Cross Plains	\$323,663,100	0.00668	\$322,205,600	0.00676
Dane	\$77,545,200	0.00160	\$74,748,500	0.00157
Deerfield	\$167,320,700	0.00345	\$167,364,200	0.00351
DeForest	\$752,366,200	0.01553	\$710,999,000	0.01493
Maple Bluff	\$376,975,200	0.00778	\$374,398,200	0.00786
Marshall	\$178,324,200	0.00368	\$167,199,200	0.00351
Mazomanie	\$134,706,050	0.00278	\$139,160,800	0.00292
McFarland	\$757,789,100	0.01564	\$721,762,200	0.01515
Mount Horeb	\$586,469,600	0.01210	\$579,511,300	0.01217
Oregon	\$830,694,900	0.01714	\$833,736,200	0.01750
Rockdale	\$15,326,900	0.00032	\$14,876,900	0.00031
Shorewood Hills	\$489,863,100	0.01011	\$466,465,500	0.00979
Waunakee	\$1,288,139,000	0.02658	\$1,243,658,100	0.02611
Total for Villages	\$7,013,235,150	0.14474	\$6,821,028,500	0.14320
Cities				
Edgerton	\$6,354,900	0.00013	\$5,991,800	0.00013
Fitchburg	\$2,364,681,500	0.04880	\$2,308,239,800	0.04846
Madison	\$21,582,533,300	0.44540	\$21,295,964,600	0.44709
Middleton	\$2,384,619,400	0.04921	\$2,313,022,800	0.04856
Monona	\$930,423,800	0.01920	\$972,170,000	0.02041
Stoughton	\$937,034,900	0.01934	\$890,120,600	0.01869
Sun Prairie	\$2,352,535,500	0.04855	\$2,265,336,700	0.04756
Verona	\$1,239,193,300	0.02557	\$1,247,920,300	0.02620
Total for Cities	\$31,797,376,600	0.65624	\$31,298,766,600	0.65709
Total for County	\$48,454,016,950	1.00000	\$47,632,082,800	1.00000
(A) Due to the varying assessment policies of the sixty municipalities of the County, the County uses the equalized value of the taxable property for tax levy purposes. The equalized value is prepared by the Wisconsin Department of Revenue, Division of State & Local Finance, Bureau of Equalization.				

COUNTY OF DANE
EQUALIZED VALUE OF TAXABLE PROPERTY (A)
LAST TEN BUDGET YEARS

Budget Year	Taxable Property Equalized Value
2004	\$33,724,492,950
2005	\$37,293,118,150
2006	\$41,164,743,450
2007	\$45,074,674,300
2008	\$47,806,288,650
2009	\$50,256,371,350
2010	\$50,383,375,250
2011	\$48,755,974,750
2012	\$48,454,016,950
2013	\$47,632,082,800



(A) Due to the varying assessment policies of the 61 municipalities of the County, the county uses the equalized value of taxable property for tax levy purposes. The equalized value is prepared by the Wisconsin Department of Revenue, Bureau of Property Tax. These values do not include Tax Incremental Districts (TID) which are not included in the taxable property value upon which county taxes are levied.

COUNTY OF DANE
EQUALIZED VALUE OF ALL PROPERTY BY ASSESSMENT CLASS (A)
LAST TEN BUDGET YEARS

Budget Year	Residential Equalized Value	Commercial Equalized Value	Manufacturing Equalized Value	Agricultural Equalized Value	Undeveloped Equalized Value	Forest Equalized Value	Other Equalized Value	Personal Property Equalized Value	Total Equalized Value
2004	\$23,841,039,000	\$8,360,234,000	\$682,130,100	94,981,700	\$38,760,200	\$125,151,800	\$559,859,000	\$994,669,300	\$34,696,825,100
2005	\$26,798,679,100	\$9,117,355,300	\$698,851,700	94,210,800	\$44,177,400	\$143,231,900	\$600,254,000	\$1,041,926,400	\$38,538,686,600
2006	\$30,052,648,400	\$9,963,945,100	\$754,229,500	93,869,600	\$49,904,700	\$139,778,400	\$651,207,800	\$1,094,145,000	\$42,799,728,500
2007	\$33,449,959,100	\$10,740,215,000	\$785,481,500	100,047,500	\$52,822,800	\$148,644,400	\$676,077,400	\$1,133,180,800	\$47,086,428,500
2008	\$35,243,614,000	\$11,775,576,600	\$815,201,200	112,251,500	\$180,244,300	\$57,003,300	\$716,872,200	\$1,213,434,700	\$50,114,197,800
2009	\$36,359,289,400	\$12,176,850,400	\$841,118,500	109,871,700	\$176,189,100	\$61,647,300	\$776,660,600	\$1,332,339,700	\$51,833,966,700
2010	\$36,214,843,800	\$12,668,895,200	\$842,643,300	110,251,100	\$192,049,200	\$61,478,000	\$779,151,900	\$1,374,453,900	\$52,243,766,400
2011	\$34,456,961,800	\$12,936,007,500	\$837,959,700	108,787,600	\$183,728,900	\$54,948,400	\$726,627,900	\$1,356,214,700	\$50,661,236,500
2012	\$34,656,040,600	\$12,375,025,600	\$842,096,100	106,502,600	\$167,841,600	\$51,009,000	\$717,863,300	\$1,279,571,300	\$50,195,950,100
2013	\$33,919,764,600	\$12,421,149,400	\$830,573,300	100,006,800	\$179,030,600	\$49,229,700	\$736,183,300	\$1,275,882,300	\$49,511,820,000

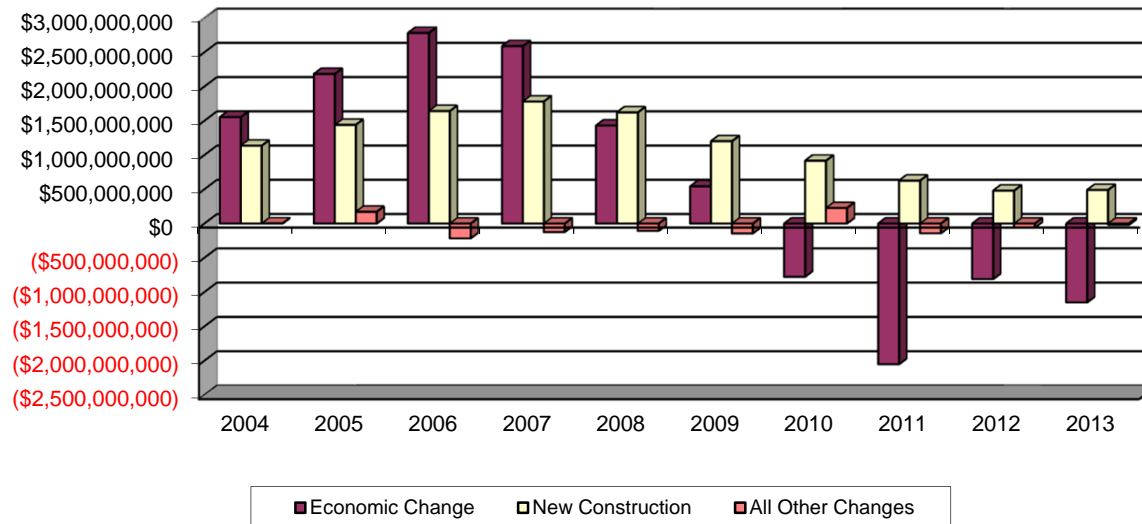
(A) The equalized value is prepared by the Wisconsin Department of Revenue, Bureau of Property Tax. These values include Tax Incremental Districts (TID) which are not included in the taxable property value upon which county taxes are levied.

COUNTY OF DANE

CHANGES IN EQUALIZED VALUATION OF REAL ESTATE PROPERTY (A)

LAST 10 BUDGET YEARS

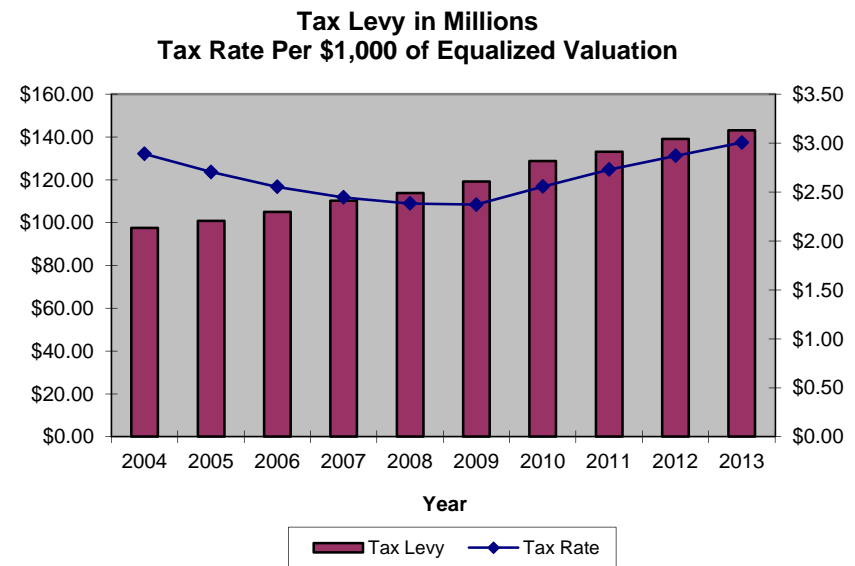
Budget Year	Prior Year Real Estate Valuation	Economic Change	New Construction	All Other Changes	Total Real Estate Valuation
2004	\$31,011,047,100	\$1,553,475,800	\$1,136,241,700	\$1,391,200	\$33,702,155,800
2005	\$33,702,155,800	\$2,183,445,200	\$1,439,941,900	\$171,217,300	\$37,496,760,200
2006	\$37,496,760,200	\$2,782,090,900	\$1,641,971,100	(\$215,238,700)	\$41,705,583,500
2007	\$41,705,583,500	\$2,589,550,700	\$1,781,394,800	(\$123,281,300)	\$45,953,247,700
2008	\$45,953,247,700	\$1,431,152,900	\$1,622,534,900	(\$106,172,400)	\$48,900,763,100
2009	\$48,900,763,100	\$542,164,700	\$1,201,829,400	(\$143,130,200)	\$50,501,627,000
2010	\$50,501,627,000	(\$776,619,700)	\$917,233,400	\$227,071,800	\$50,869,312,500
2011	\$50,869,312,500	(\$2,049,236,800)	\$626,677,600	(\$141,731,500)	\$49,305,021,800
2012	\$49,305,021,800	(\$811,096,000)	\$480,047,800	(\$57,594,800)	\$48,916,378,800
2013	\$48,916,378,800	(\$1,149,704,100)	\$489,542,800	(\$20,279,800)	\$48,235,937,700



(A) The equalized value is prepared by the Wisconsin Department of Revenue, Bureau of Property Tax. These values include Tax Incremental Districts (TID) which are not included in the taxable property value upon which county taxes are levied.

COUNTY OF DANE
PROPERTY TAX RATES
LAST TEN BUDGET YEARS

Budget Year	Tax Levy	Rate per \$1,000 of Equalized Value
2004	\$97,456,418	\$2.89
2005	\$100,857,453	\$2.70
2006	\$105,045,958	\$2.55
2007	\$110,172,695	\$2.44
2008	\$113,877,907	\$2.38
2009	\$119,150,454	\$2.37
2010	\$128,720,640	\$2.55
2011	\$133,068,833	\$2.73
2012	\$139,057,624	\$2.87
2013	\$143,141,718	\$3.01



NOTE: The above property tax rates are the county-wide average rates, based on equalized valuations for the County as a whole, not including Tax Incremental Districts (TID).

COUNTY OF DANE

COUNTY TAXES

LAST TEN BUDGET YEARS

Budget Year	Property Tax Levy	Rate per \$1,000 of Equalized Value (A)	County Sales Tax (B)	Total County Taxes
2004	\$97,456,418	\$2.89	\$39,687,000	\$137,143,418
2005	\$100,857,453	\$2.70	\$42,548,000	\$143,405,453
2006	\$105,045,958	\$2.55	\$42,867,110	\$147,913,068
2007	\$110,172,695	\$2.44	\$42,992,110	\$153,164,805
2008	\$113,877,907	\$2.38	\$44,658,854	\$158,536,761
2009	\$119,150,454	\$2.37	\$45,105,443	\$164,255,897
2010	\$128,720,640	\$2.55	\$40,143,843	\$168,864,483
2011	\$133,068,833	\$2.73	\$40,545,275	\$173,614,108
2012	\$139,057,624	\$2.87	\$42,611,858	\$181,669,482
2013	\$143,141,718	\$3.01	\$45,241,496	\$188,383,214

(A) The above property tax rates are the county-wide average rates, based on equalized valuations for the County as a whole, not including Tax Incremental Districts (TID).

(B) The County enacted a 0.5% Sales Tax Rate effective April 1, 1991.

**DANE COUNTY SALES AND USE TAX COLLECTIONS BY NAICS CODE
(Calendar Year Basis)**

NAICS	DESCRIPTION	2009	2010	2011
11	Agricultural, Forestry, Hunting, & Fishing	\$90,648	\$67,837	\$86,876
21	Mining, Quarrying, and Oil and Gas Extraction	\$24,061	\$22,245	\$21,996
22	Utilities	\$1,813,568	\$1,923,806	\$2,005,026
23	Construction	\$1,151,649	\$1,040,940	\$1,170,743
31-33	Manufacturing	\$1,261,847	\$1,276,882	\$1,470,230
42	Wholesale Trade	\$3,210,075	\$3,629,529	\$4,146,539
44-45	Retail Trade	\$18,628,749	\$18,804,314	\$19,405,711
48-49	Transportation and Warehousing	\$74,515	\$50,830	\$61,777
51	Information	\$3,292,225	\$3,401,916	\$3,320,637
52	Finance and Insurance	\$263,982	\$258,403	\$300,018
53	Real Estate and Rental and Leasing	\$936,123	\$975,802	\$988,311
54	Professional, Scientific, and Technical Services	\$1,546,350	\$1,417,102	\$1,540,817
55	Management of Companies and Enterprises	\$83,393	\$68,753	\$76,821
56	Administrative and Support and Waste Management and Remediation Services	\$466,504	\$514,282	\$494,173
61	Educational Services	\$471,804	\$485,687	\$507,680
62	Health Care and Social Assistance	\$104,667	\$106,278	\$113,604
71	Arts, Entertainment, and Recreation	\$302,248	\$319,572	\$322,863
72	Accommodation and Food Services	\$4,322,637	\$4,459,930	\$4,635,788
81	Other Services (Except Public Administration)	\$1,574,170	\$1,618,278	\$1,640,824
92	Public Administration	\$256,126	\$324,023	\$303,143
99	Not Reported	\$152,080	\$290,794	\$435,316
	TOTAL	\$40,027,421	\$41,057,203	\$43,048,891

Source: Wisconsin Department of Revenue

**COUNTY OF DANE
DEMOGRAPHIC STATISTICS
LAST TEN FISCAL YEARS**

Fiscal Year	Population (1)	Per Capita Personal Income (3)	School Enrollment (5)	Unemployment Rate (6)
2003	445,253	\$37,568	71,516	3.6%
2004	450,730	\$39,035	71,222	3.2%
2005	458,297	\$40,559	72,829	3.2%
2006	464,513	\$43,343	74,151	3.2%
2007	468,514	\$44,610	73,988	3.4%
2008	471,559	\$45,712	74,076	3.4%
2009	473,622	\$43,895	75,003	5.9%
2010	488,073 (2)	\$45,106	76,707	5.7%
2011	489,331	(4)	79,618	5.0%
2012	491,555	(4)	(4)	(4)

(1) Estimates prepared annually by the Wisconsin Department of Administration, Demographic Services Center.

(2) Official 2010 United States Census.

(3) United States Department of Commerce, Bureau of Economic Analysis.

(4) Information Not Available at this time.

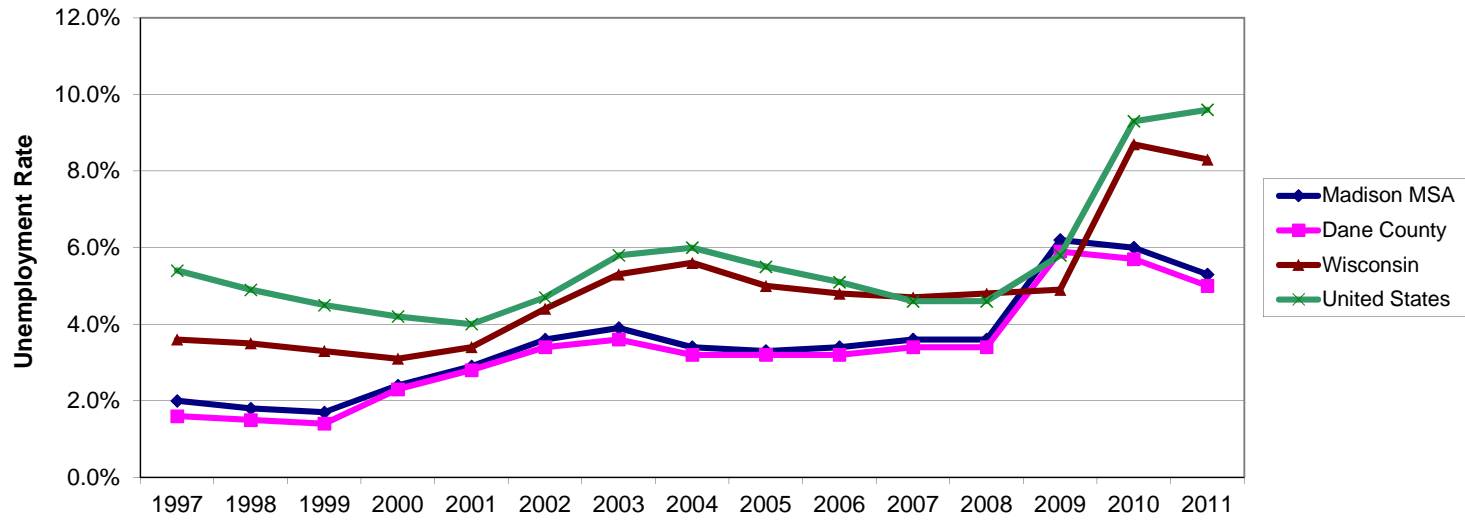
(5) Wisconsin Department of Public Instruction, Fall Registration - Public and Private Schools.

(6) Wisconsin Department of Workforce Development Local Area Unemployment Historical Series, Not Seasonally Adjusted.

Annual Unemployment Statistics Not Seasonally Adjusted

Year	Madison MSA				Dane County			
	Labor Force	Employed	Unemployed	Unemployment Rate	Labor Force	Employed	Unemployed	Unemployment Rate
1997	302,116	296,097	6,019	2.0%	261,002	256,762	4,240	1.6%
1998	304,575	299,006	5,569	1.8%	263,110	259,169	3,941	1.5%
1999	306,503	301,415	5,088	1.7%	265,760	262,101	3,659	1.4%
2000	310,071	302,506	7,565	2.4%	266,439	260,322	6,117	2.3%
2001	318,972	309,609	9,363	2.9%	274,174	266,623	7,551	2.8%
2002	321,858	310,348	11,510	3.6%	277,013	267,647	9,366	3.4%
2003	323,813	311,309	12,504	3.9%	278,751	268,579	10,172	3.6%
2004	327,246	316,085	11,161	3.4%	281,894	272,772	9,122	3.2%
2005	332,979	321,840	11,139	3.3%	286,918	277,809	9,109	3.2%
2006	336,708	325,188	11,520	3.4%	290,457	281,043	9,414	3.2%
2007	339,116	327,032	12,084	3.6%	293,777	283,855	9,922	3.4%
2008	340,697	328,444	12,253	3.6%	295,604	285,560	10,044	3.4%
2009	345,552	324,105	21,447	6.2%	300,199	282,500	17,699	5.9%
2010	346,430	325,808	20,662	6.0%	299,832	282,891	16,941	5.7%
2011	345,024	326,703	18,321	5.3%	298,714	283,668	15,046	5.0%

Source: United States Department of Labor, Bureau of Labor Statistics



Dane County Population Projections by Age & Sex: 2005 - 2035

Age Group	Total						
	2005 Estimate	2010 Projected	2015	2020	2025	2030	2035
0-4	28,965	30,809	34,092	36,871	38,543	39,904	41,758
5-9	26,601	29,583	31,709	35,058	37,713	39,267	40,496
10-14	28,626	28,125	31,553	33,750	37,053	39,641	41,057
15-19	33,664	34,069	33,692	37,405	39,501	42,936	45,545
20-24	48,129	48,871	49,019	47,969	51,917	54,160	58,180
25-29	36,788	39,847	40,808	40,953	39,921	43,101	44,827
30-34	32,841	34,782	37,974	38,920	38,925	37,848	40,752
35-39	33,833	32,511	34,700	37,916	38,730	38,639	37,469
40-44	35,711	33,852	32,817	35,052	38,123	38,836	38,644
45-49	34,915	35,764	34,228	33,224	35,361	38,314	38,913
50-54	32,996	34,547	35,667	34,196	33,115	35,180	38,022
55-59	26,264	31,871	33,660	34,816	33,311	32,215	34,159
60-64	17,355	24,852	30,444	32,234	33,285	31,817	30,734
65-69	11,680	16,001	23,116	28,417	30,053	31,026	29,632
70-74	9,749	10,791	14,875	21,573	26,544	28,117	29,057
75-79	8,564	8,645	9,596	13,275	19,303	23,865	25,377
80-84	6,870	7,107	7,202	8,054	11,178	16,350	20,349
85-89	4,021	4,833	5,086	5,224	5,900	8,256	12,191
90-94	1,670	2,065	2,547	2,755	2,885	3,312	4,706
95-99	498	663	862	1,110	1,244	1,343	1,585
100 & Over	94	124	171	233	312	373	423
Totals	459,834	489,712	523,818	559,005	592,917	624,500	653,876

Components of Population Change for 2000 - 2035

Component	2000-2035
County Births	248,481
County Deaths	124,881
Natural Increase	123,600
County Net Migration	103,750
Total Change	227,350

Source: Population Projections for Wisconsin Counties by Age & Sex: 2005 - 2035 prepared by the Demographic Services Center, Wisconsin Department of Administration, May 2008.

Dane County Population Projections by Age & Sex: 2005 - 2035

Males							
Age Group	2005 Estimated	2010 Projected	2015	2020	2025	2030	2035
0-4	14,850	15,769	17,440	18,866	19,717	20,418	21,365
5-9	13,514	15,173	16,232	17,940	19,297	20,090	20,722
10-14	14,611	14,281	16,181	17,279	18,954	20,279	20,996
15-19	16,865	16,873	16,616	18,668	19,689	21,395	22,703
20-24	24,483	24,639	24,498	23,805	26,002	27,083	29,068
25-29	19,060	20,798	21,129	21,031	20,359	22,182	23,039
30-34	17,028	18,079	19,896	20,235	20,071	19,383	21,062
35-39	17,301	16,818	18,007	19,841	20,109	19,897	19,165
40-44	17,792	17,297	16,976	18,194	19,954	20,172	19,910
45-49	17,355	17,796	17,485	17,191	18,357	20,059	20,219
50-54	16,209	17,170	17,760	17,492	17,163	18,299	19,945
55-59	12,962	15,618	16,704	17,321	17,031	16,697	17,773
60-64	8,455	12,187	14,840	15,924	16,492	16,213	15,884
65-69	5,525	7,611	11,066	13,533	14,518	15,049	14,802
70-74	4,412	4,960	6,895	10,082	12,345	13,274	13,784
75-79	3,573	3,697	4,166	5,830	8,576	10,585	11,456
80-84	2,675	2,752	2,854	3,253	4,583	6,817	8,507
85-89	1,258	1,625	1,702	1,798	2,083	2,978	4,503
90-94	423	561	747	806	875	1,040	1,521
95-99	118	171	237	328	367	412	505
100 & Over	16	20	30	44	65	79	94
Totals	228,485	243,895	261,461	279,461	296,607	312,401	327,023

Source: Population Projections for Wisconsin Counties by Age & Sex : 2005 - 2035 prepared by the Demographic Services Center, Wisconsin Department of Administration, May 2008.

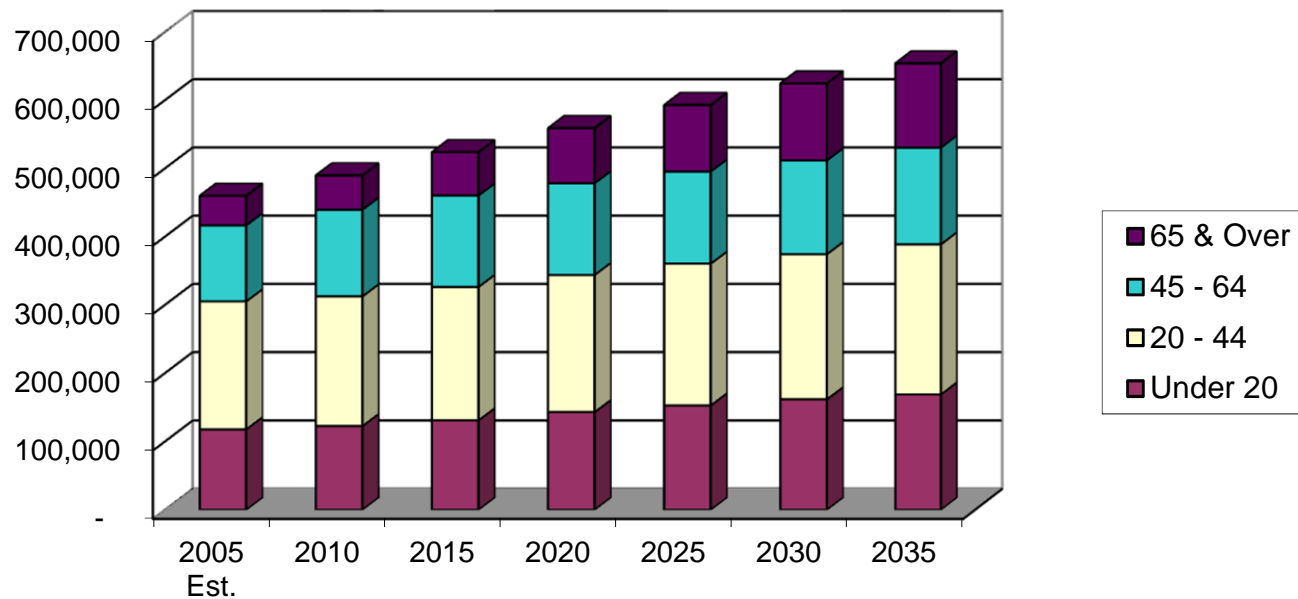
Dane County Population Projections by Age & Sex: 2005 - 2035

Females							
Age Group	2005 Estimate	2010 Projected	2015	2020	2035	2030	2035
0-4	14,115	15,040	16,652	18,005	18,826	19,486	20,393
5-9	13,087	14,410	15,477	17,118	18,416	19,177	19,774
10-14	14,015	13,844	15,372	16,471	18,099	19,362	20,061
15-19	16,799	17,196	17,076	18,737	19,812	21,541	22,842
20-24	23,646	24,232	24,521	24,164	25,915	27,077	29,112
25-29	17,728	19,049	19,679	19,922	19,562	20,919	21,788
30-34	15,813	16,703	18,078	18,685	18,854	18,465	19,690
35-39	16,532	15,693	16,693	18,075	18,621	18,742	18,304
40-44	17,919	16,555	15,841	16,858	18,169	18,664	18,734
45-49	17,560	17,968	16,743	16,033	17,004	18,255	18,694
50-54	16,787	17,377	17,907	16,704	15,952	16,881	18,077
55-59	13,302	16,253	16,956	17,495	16,280	15,518	16,386
60-64	8,900	12,665	15,604	16,310	16,793	15,604	14,850
65-69	6,155	8,390	12,050	14,884	15,535	15,977	14,830
70-74	5,337	5,831	7,980	11,491	14,199	14,843	15,273
75-79	4,991	4,948	5,430	7,445	10,727	13,280	13,921
80-84	4,195	4,355	4,348	4,801	6,595	9,533	11,842
85-89	2,763	3,208	3,384	3,426	3,817	5,278	7,688
90-94	1,247	1,504	1,800	1,949	2,010	2,272	3,185
95-99	380	492	625	782	877	931	1,080
100 & Over	78	104	141	189	247	294	329
Totals	231,349	245,817	262,357	279,544	296,310	312,099	326,853

Source: Population Projections for Wisconsin Counties by Age & Sex: 2005 - 2035 prepared by the Demographic Services Center, Wisconsin Department of Administration, May 2008.

Dane County Population Projections by Age & Sex: 2005 - 2035

Age Group	2005 Est.	2010	2015	2020	2025	2030	2035
Under 20	117,856	122,586	131,046	143,084	152,810	161,748	168,856
20 - 44	187,302	189,863	195,318	200,810	207,616	212,584	219,872
45 - 64	111,530	127,034	133,999	134,470	135,072	137,526	141,828
65 & Over	43,146	50,229	63,455	80,641	97,419	112,642	123,320



Source: Population Projections for Wisconsin Counties by Age & Sex: 2005 - 2035 prepared by the Demographic Services Center, Wisconsin Department of Administration, May 2008.

**COUNTY OF DANE
LARGEST EMPLOYERS**

Employer	Type of Organization	Employees
State of Wisconsin	State Government	47,237
UW Hospital & Clinics Authority	Hospital Health Care	7,253
Madison Metropolitan School District	Education	3,837
United States Government	Federal Government	3,800
Oscar Mayer Foods Corporation	Food Packaging	3,500
UW Medical Foundation	Health Care, Clinics, Insurance	3,448
WPS Insurance Corporation	Health benefits, insurance and administration	3,219
Epic Systems	Software Services	3,168
Dane County	County Government	3,048
American Family Mutual Insurance	Insurance	3,034

¹ Source: Greater Madison Area Chamber of Commerce and telephone contacts and D&B Database

**COUNTY OF DANE
PRINCIPAL TAXPAYERS
BUDGET YEAR 2013**

<u>Taxpayer</u>	<u>Type of Business</u>	<u>2012 Equalized Assessed Value</u>	<u>Percentage Of Total Equalized Assessed Valuation</u>
Epic Systems	Medical Software	\$390,752,619	0.82%
Madison Joint Venture	Shopping Centers	\$190,724,798	0.40%
American Family Insurance	Insurance	\$147,525,432	0.31%
University Research Park, Inc.	Research & Technology Park	\$122,323,508	0.26%
Greenway Office Center	Property Management	\$117,359,547	0.25%
Covance Laboratories	Research	\$81,451,233	0.17%
CMFG Life Insurance Co	Insurance	\$52,568,314	0.11%
SBA Usquare LLC	Property Management	\$50,844,335	0.11%
Pinckney Investment Group	Property Management	\$45,147,887	0.09%
Hilldale Land Company, LLC	Property Management	\$43,101,627	0.09%
Totals		<u>\$1,241,799,300</u>	<u>2.61%</u>

COUNTY OF DANE
COMPUTATION OF LEGAL DEBT MARGIN
12/31/2012 (Estimated)

CHAPTER 67, SECTION 03 OF THE WISCONSIN STATE STATUTES STATES:

"The aggregate amount of indebtedness, including existing indebtedness, of any municipality shall not exceed 5% of the value of the taxable property located therein as equalized for state purposes."

Equalized value of real and personal property including TID values (1)		<u>\$49,511,820,000</u>
Debt limit - 5% of equalized value		\$2,475,591,000
Amount of Debt applicable to debt limit:		
General obligation debt (2)	\$236,848,931	
Less:		
Asset amount in Debt Service Fund available for payment of principal		
Net amount in Debt Service Fund available for payment of principal	<u>\$607,484</u>	
Net amount of debt applicable to debt limit		<u>\$236,241,447</u>
Legal debt margin		<u>\$2,239,349,553</u>

- (1) The "Equalized value of real and personal property including TID values" is the sum of the Equalized values plus the values of the tax incremental districts, which valuation is used for purposes of levying the property tax for state forestry tax purposes.
- (2) General obligation debt is defined to be the total County indebtedness for all funds.

Sub. 2 to Res. 135, 2012-2013**SETTING THE 2012 TAX LEVY**

The County Board of Supervisors may, according to law, levy certain taxes each year as follows:

<u>Tax Levy</u>	<u>Levied to</u>
State Tax	Entire County
County Taxes	
State Special Charges	Entire County
Bridge Aid	All Towns and the City of Monona
Highway	Entire County
County Library	All towns; the Villages of Blue Mounds, Brooklyn, Cottage Grove, Dane, Maple Bluff, Rockdale, Shorewood Hills.
Board of Health	Entire County except the City of Madison

NOW, THEREFORE, BE IT RESOLVED that the State Taxes in conformity thereto, be levied in the amount of \$8,402,459.19 for State Forestation Tax on the taxable property of Dane County as provided in Section 70.58 f the Wisconsin Statutes.

BE IT FURTHER RESOLVED that County Taxes in conformity thereto:

1. \$157,200 be levied for County Bridge Aid on the taxable property of Dane County, exclusive of all villages and cities in the County which have never received County Bridge Aid except as otherwise provided in Sections 81.38 of the Wisconsin Statutes.
2. \$4,245,879 be levied for a County Library Tax on the taxable property of Dane County, exclusive of those towns, villages or cities which have filed a written application for exemption from a County Library Tax as provided in Section 43.64 of the Wisconsin Statutes.
3. \$5,409,298 be levied for a County Board of Health on the taxable property of Dane County exclusive of those towns, villages and cities having a full-time Health Department as provided in Section 140.09(11) of the Wisconsin Statutes.
4. Taxes be levied on the taxable property of Dane County as follows:
 - A. \$ -18,945 for State Special Charges
 - B. \$ 6,530,354 for Highway
 - C. \$126,817,932 County Taxes

Summary:

Gross County Taxes	\$ 189,817,144
Gross Tax Rate Per \$1,000	\$ 3.99
County Sales Tax Applied	\$ 45,241,496
Net Proposed County Property Taxes	\$ 144,575,648
State Aid – Exempt Computers	\$ 1,433,930
Net Required County Property Taxes	\$ 143,141,718
Net Tax Rate Per \$1,000	\$ 3.01

DANE COUNTY
2013 Budget
Tax Apportionment

MUNICIPALITY	OTHER CHARGES	CHARITABLE & PENAL	BRIDGE AID	COUNTY HIGHWAY	COUNTY LIBRARY	COUNTY HEALTH	ALL OTHER COUNTY TAXES	TOTAL COUNTY TAXES
TOWNS								
Albion	0.00	(79.28)	2,988.62	27,327.59	76,376.26	40,940.52	530,695.38	678,249.09
Berry	0.00	(72.81)	2,744.63	25,096.56	70,140.89	37,598.13	487,369.30	622,876.70
Black Earth	0.00	(28.85)	1,087.64	9,945.24	27,795.36	14,899.35	193,134.20	246,832.94
Blooming Grove	0.00	(73.45)	2,769.03	25,319.72	70,764.58	37,932.45	491,702.92	628,415.25
Blue Mounds	0.00	(49.63)	1,870.95	17,107.76	47,813.48	25,629.80	332,228.74	424,601.10
Bristol	0.00	(152.95)	5,765.80	52,721.78	147,348.98	78,984.54	1,023,844.54	1,308,512.69
Burke	0.00	(173.99)	6,559.04	59,975.09	167,620.82	89,851.00	1,164,702.10	1,488,534.06
Christiana	0.00	(48.86)	1,842.09	16,843.86	47,075.91	25,234.44	327,103.77	418,051.21
Cottage Grove	0.00	(149.02)	5,617.84	51,368.82	143,567.68	76,957.62	997,570.40	1,274,933.34
Cross Plains	0.00	(89.82)	3,385.98	30,961.02	86,531.13	46,383.91	601,255.74	768,427.96
Dane	0.00	(45.86)	1,728.80	15,807.98	44,180.77	23,682.54	306,987.15	392,341.38
Deerfield	0.00	(65.93)	2,485.52	22,727.27	63,519.10	34,048.60	441,358.23	564,072.79
Dunkirk	0.00	(74.97)	2,826.14	25,841.94	72,224.08	38,714.80	501,844.30	641,376.29
Dunn	0.00	(252.57)	9,521.33	87,061.92	243,324.19	130,430.83	1,690,721.96	2,160,807.66
Madison	0.00	(142.36)	5,366.79	49,073.28	137,151.99	73,518.58	952,991.48	1,217,959.76
Mazomanie	0.00	(45.04)	1,697.96	15,525.94	43,392.51	23,260.00	301,510.01	385,341.38
Medina	0.00	(53.84)	2,029.60	18,558.46	51,867.94	27,803.14	360,400.96	460,606.26
Middleton	0.00	(409.45)	15,435.45	141,139.67	394,462.84	211,446.78	2,740,898.97	3,502,974.26
Montrose	0.00	(49.20)	1,854.89	16,960.90	47,403.02	25,409.78	329,376.73	420,956.12
Oregon	0.00	(142.56)	5,374.30	49,141.98	137,344.00	73,621.50	954,325.61	1,219,664.83
Perry	0.00	(30.88)	1,163.97	10,643.18	29,745.98	15,944.95	206,687.99	264,155.19
Pleasant Springs	0.00	(173.35)	6,534.85	59,753.86	167,002.50	89,519.55	1,160,405.76	1,483,043.17
Primrose	0.00	(33.68)	1,269.69	11,609.90	32,447.84	17,393.25	225,461.61	288,148.61
Roxbury	0.00	(81.03)	3,054.55	27,930.45	78,061.14	41,843.68	542,402.70	693,211.49
Rutland	0.00	(95.13)	3,586.21	32,791.89	91,648.09	49,126.78	636,810.67	813,868.51
Springdale	0.00	(113.16)	4,265.96	39,007.47	109,019.67	58,438.60	757,515.85	968,134.39
Springfield	0.00	(152.73)	5,757.64	52,647.16	147,140.41	78,872.74	1,022,395.39	1,306,660.61
Sun Prairie	0.00	(99.26)	3,741.91	34,215.61	95,627.18	51,259.73	664,459.13	849,204.30
Vermont	0.00	(54.75)	2,064.05	18,873.46	52,748.31	28,275.06	366,518.15	468,424.28
Verona	0.00	(109.70)	4,135.50	37,814.56	105,685.69	56,651.46	734,349.89	938,527.40
Vienna	0.00	(87.39)	3,294.49	30,124.46	84,193.05	45,130.61	585,009.85	747,665.07
Westport	0.00	(301.32)	11,359.23	103,867.46	290,293.00	155,607.86	2,017,081.57	2,577,907.80
Windsor	0.00	(220.20)	8,301.12	75,904.41	212,140.74	113,715.33	1,474,045.79	1,883,887.19
York	0.00	(30.30)	1,142.08	10,443.08	29,186.74	15,645.18	202,802.16	259,188.94
TOTAL TOWNS	0.00	(3,783.32)	142,623.65	1,304,133.73	3,644,845.87	1,953,773.09	25,325,969.00	32,367,562.02

DANE COUNTY
2013 Budget
Tax Apportionment

MUNICIPALITY	OTHER CHARGES	CHARITABLE & PENAL	BRIDGE AID	COUNTY HIGHWAY	COUNTY LIBRARY	COUNTY HEALTH	ALL OTHER COUNTY TAXES	TOTAL COUNTY TAXES
VILLAGES								
Belleville	0.00	(56.88)	0.00	19,608.43	0.00	29,376.14	380,791.00	429,718.69
Black Earth	0.00	(37.10)	0.00	12,788.29	0.00	19,158.64	248,345.65	280,255.48
Blue Mounds	0.00	(16.83)	0.00	5,800.60	16,211.76	8,690.10	112,646.28	143,331.91
Brooklyn	0.00	(24.56)	0.00	8,466.74	23,663.19	12,684.35	164,422.11	209,211.83
Cambridge	0.00	(51.93)	0.00	17,899.86	0.00	26,816.47	347,611.00	392,275.40
Cottage Grove	0.00	(212.39)	0.00	73,213.64	204,620.45	109,684.18	1,421,791.60	1,809,097.48
Cross Plains	0.00	(128.15)	0.00	44,174.36	0.00	66,179.31	857,855.59	968,081.11
Dane	0.00	(29.73)	0.00	10,248.01	28,641.56	15,352.94	199,013.99	253,226.77
Deerfield	0.00	(66.57)	0.00	22,945.61	0.00	34,375.71	445,598.39	502,853.14
DeForest	0.00	(282.78)	0.00	97,477.90	0.00	146,035.40	1,892,997.70	2,136,228.22
Maple Bluff	0.00	(148.91)	0.00	51,329.96	143,459.05	76,899.39	996,815.70	1,268,355.19
Marshall	0.00	(66.50)	0.00	22,922.99	0.00	34,341.82	445,159.09	502,357.40
Mazomanie	0.00	(55.35)	0.00	19,078.93	0.00	28,582.89	370,508.35	418,114.82
McFarland	0.00	(287.06)	0.00	98,953.53	0.00	148,246.10	1,921,654.12	2,168,566.69
Mount Horeb	0.00	(230.49)	0.00	79,450.94	0.00	119,028.52	1,542,918.58	1,741,167.55
Oregon	0.00	(331.60)	0.00	114,305.15	0.00	171,244.96	2,219,779.10	2,504,997.61
Rockdale	0.00	(5.92)	0.00	2,039.62	5,700.42	3,055.64	39,608.92	50,398.68
Shorewood Hills	0.00	(185.53)	0.00	63,952.38	178,736.70	95,809.52	1,241,940.06	1,580,253.13
Waunakee	0.00	(494.64)	0.00	170,505.41	0.00	255,440.73	3,311,174.74	3,736,626.24
TOTAL VILLAGES	0.00	(2,712.92)	0.00	935,162.35	601,033.13	1,401,002.81	18,160,631.97	21,095,117.34
CITIES								
Edgerton	0.00	(2.38)	0.00	821.47	0.00	1,230.69	15,952.81	18,002.59
Fitchburg	0.00	(918.05)	0.00	316,459.45	0.00	474,100.12	6,145,567.82	6,935,209.34
Madison	0.00	(8,469.92)	0.00	2,919,674.73	0.00	0.00	56,699,393.33	59,610,598.14
Middleton	0.00	(919.95)	0.00	317,115.20	0.00	475,082.53	6,158,302.37	6,949,580.15
Monona	0.00	(386.66)	14,576.35	133,284.41	0.00	199,678.52	2,588,351.84	2,935,504.46
Stoughton	0.00	(354.02)	0.00	122,035.45	0.00	182,826.02	2,369,899.58	2,674,407.03
Sun Prairie	0.00	(900.98)	0.00	310,577.45	0.00	465,288.06	6,031,340.62	6,806,305.15
Verona	0.00	(496.33)	0.00	171,089.76	0.00	256,316.16	3,322,522.66	3,749,432.25
TOTAL CITIES	0.00	(12,448.29)	14,576.35	4,291,057.92	0.00	2,054,522.10	83,331,331.03	89,679,039.11
TOTALS	0.00	(18,944.53)	157,200.00	6,530,354.00	4,245,879.00	5,409,298.00	126,817,932.00	143,141,718.47

ATTORNEYS' ASSOCIATION SALARY SCHEDULE - "A"
Effective 12/16/12 through 06/01/13

RANGE	HOURLY RATE	BI-WEEKLY^K RATE	MONTHLY^J RATE	ANNUAL^J RATE
22 (1)	\$27.66	\$2,212.80	\$4,794	\$57,533
23	\$28.80	2,304.00	4,992	59,904
23.5	\$29.46	2,356.80	5,106	61,277
24	\$30.03	2,402.40	5,205	62,462
24.5	\$30.71	2,456.80	5,323	63,877
25	\$31.35	2,508.00	5,434	65,208
25.5	\$31.94	2,555.20	5,536	66,435
26	\$32.60	2,608.00	5,651	67,808
26.5	\$33.29	2,663.20	5,770	69,243
27	\$33.89	2,711.20	5,874	70,491
27.5	\$34.68	2,774.40	6,011	72,134
28	\$35.33	2,826.40	6,124	73,486
28.5	\$35.96	2,876.80	6,233	74,797
29	\$36.67	2,933.60	6,356	76,274
29.5	\$37.42	2,993.60	6,486	77,834
30 (2)	\$38.12	3,049.60	6,607	79,290
30.5	\$38.86	3,108.80	6,736	80,829
31	\$39.68	3,174.40	6,878	82,534
31.5	\$40.45	3,236.00	7,011	84,136
32	\$41.29	3,303.20	7,157	85,883
32.5	\$42.04	3,363.20	7,287	87,443
33	\$42.89	3,431.20	7,434	89,211
33.5	\$43.79	3,503.20	7,590	91,083
34	\$44.65	3,572.00	7,739	92,872
34.5	\$45.54	3,643.20	7,894	94,723
35	\$46.40	3,712.00	8,043	96,512
35.5	\$47.45	3,796.00	8,225	98,696
36	\$48.39	3,871.20	8,388	100,651
36.5	\$49.45	3,956.00	8,571	102,856
37	\$50.50	4,040.00	8,753	105,040
37.5	\$51.62	4,129.60	8,947	107,370
38	\$52.76	4,220.80	9,145	109,741
38.5	\$53.93	4,314.40	9,348	112,174
39	\$55.12	4,409.60	9,554	114,650
39.5	\$56.49	4,519.20	9,792	117,499
40	\$57.87	4,629.60	10,031	120,370

Effective 1/1/78 New Employees: 1) **Range 22-40:** Assistant Corporation Counsels start at Range 22. 2) **Range 30-40:** Judicial Court Commissioners start at Range 30. ^J Monthly and Annual rates based on 2,080 hours per year. ^K Biweekly rate based on 80 hours.

UNION LOCAL 65, AFSCME, AFL-CIO SALARY SCHEDULE - "F"
Effective 12/16/12 to 06/01/13

RANGE (SCALE)	HOURLY RATE	BIWEEKLY	MONTHLY*					ANNUAL RATE
			Step 1*	Step 2*	Step 3*	Step 4*	Step 5*	
06	17.66	1,412.80	\$ 3,061	17.88 \$ 3,099	18.25 \$ 3,163	18.62 \$ 3,227	18.95 \$ 3,285	\$ 36,733
09	18.62	1,489.60	\$ 3,227	18.95 \$ 3,285	19.33 \$ 3,351	19.73 \$ 3,420	20.15 \$ 3,493	\$ 38,730
10	18.95	1,516.00	\$ 3,285	19.33 \$ 3,351	19.73 \$ 3,420	20.15 \$ 3,493	20.54 \$ 3,560	\$ 39,416
11	19.33	1,546.40	\$ 3,351	19.73 \$ 3,420	20.15 \$ 3,493	20.54 \$ 3,560	21.05 \$ 3,649	\$ 40,206
12	19.73	1,578.40	\$ 3,420	20.15 \$ 3,493	20.54 \$ 3,560	21.05 \$ 3,649	21.53 \$ 3,732	\$ 41,038
13	20.15	1,612.00	\$ 3,493	20.54 \$ 3,560	21.05 \$ 3,649	21.53 \$ 3,732	22.05 \$ 3,822	\$ 41,912
14	20.54	1,643.20	\$ 3,560	21.05 \$ 3,649	21.53 \$ 3,732	22.05 \$ 3,822	22.50 \$ 3,900	\$ 42,723
16	21.53	1,722.40	\$ 3,732	22.05 \$ 3,822	22.50 \$ 3,900	23.06 \$ 3,997	23.74 \$ 4,115	\$ 44,782
17	22.05	1,764.00	\$ 3,822	22.50 \$ 3,900	23.06 \$ 3,997	23.74 \$ 4,115	24.36 \$ 4,222	\$ 45,864
18	22.50	1,800.00	\$ 3,900	23.06 \$ 3,997	23.74 \$ 4,115	24.36 \$ 4,222	24.97 \$ 4,328	\$ 46,800
19	23.06	1,844.80	\$ 3,997	23.74 \$ 4,115	24.36 \$ 4,222	24.97 \$ 4,328	25.72 \$ 4,458	\$ 47,965

Biweekly rate based on 80 hours of Step 1. Monthly and Annual rates based on 2,080 hours per year.

JOINT COUNCIL OF UNIONS AFSCME, AFL-CIO SALARY SCHEDULE - "G"
Effective 12/16/12 through 06/01/13

RANGE (SCALE)	HOURLY RATE	BIWEEKLY	MONTHLY*					ANNUAL				
			Step 1*	Step 2*	Step 3*	Step 4*	Step 5*	RATE STEP 1				
03	\$ 14.87	\$ 1,189.60	\$ 2,577	\$ 15.52	\$ 2,690	\$ 16.18	\$ 2,805	\$ 16.81	\$ 2,914	\$ 17.42	\$ 3,019	\$ 30,930
04	16.46	1,316.80	\$ 2,853	16.98	\$ 2,943	17.23	\$ 2,987	17.54	\$ 3,040	17.78	\$ 3,082	\$ 34,237
05	16.71	1,336.80	\$ 2,896	17.23	\$ 2,987	17.54	\$ 3,040	17.78	\$ 3,082	18.21	\$ 3,156	\$ 34,757
06	17.42	1,393.60	\$ 3,019	17.69	\$ 3,066	17.96	\$ 3,113	18.31	\$ 3,174	18.70	\$ 3,241	\$ 36,234
07	17.69	1,415.20	\$ 3,066	17.96	\$ 3,113	18.31	\$ 3,174	18.70	\$ 3,241	19.01	\$ 3,295	\$ 36,795
08	17.96	1,436.80	\$ 3,113	18.31	\$ 3,174	18.70	\$ 3,241	19.01	\$ 3,295	19.39	\$ 3,361	\$ 37,357
09	18.31	1,464.80	\$ 3,174	18.70	\$ 3,241	19.01	\$ 3,295	19.39	\$ 3,361	19.81	\$ 3,434	\$ 38,085
10	18.70	1,496.00	\$ 3,241	19.01	\$ 3,295	19.39	\$ 3,361	19.81	\$ 3,434	20.26	\$ 3,512	\$ 38,896
11	19.01	1,520.80	\$ 3,295	19.39	\$ 3,361	19.81	\$ 3,434	20.26	\$ 3,512	20.68	\$ 3,585	\$ 39,541
12	19.39	1,551.20	\$ 3,361	19.81	\$ 3,434	20.26	\$ 3,512	20.68	\$ 3,585	21.15	\$ 3,666	\$ 40,331
13	19.81	1,584.80	\$ 3,434	20.26	\$ 3,512	20.68	\$ 3,585	21.15	\$ 3,666	21.60	\$ 3,744	\$ 41,205
14	20.26	1,620.80	\$ 3,512	20.68	\$ 3,585	21.15	\$ 3,666	21.60	\$ 3,744	22.10	\$ 3,831	\$ 42,141
14F	20.54	1,643.20	\$ 3,560	21.05	\$ 3,649	21.53	\$ 3,732	22.05	\$ 3,822	22.50	\$ 3,900	\$ 42,723
15	20.68	1,654.40	\$ 3,585	21.15	\$ 3,666	21.60	\$ 3,744	22.10	\$ 3,831	22.60	\$ 3,917	\$ 43,014
16	21.15	1,692.00	\$ 3,666	21.60	\$ 3,744	22.10	\$ 3,831	22.60	\$ 3,917	23.22	\$ 4,025	\$ 43,992
17	21.60	1,728.00	\$ 3,744	22.10	\$ 3,831	22.60	\$ 3,917	23.22	\$ 4,025	23.79	\$ 4,124	\$ 44,928
18	22.10	1,768.00	\$ 3,831	22.60	\$ 3,917	23.22	\$ 4,025	23.79	\$ 4,124	24.48	\$ 4,243	\$ 45,968
19	22.60	1,808.00	\$ 3,917	23.22	\$ 4,025	23.79	\$ 4,124	24.48	\$ 4,243	25.15	\$ 4,359	\$ 47,008
20	23.22	1,857.60	\$ 4,025	23.79	\$ 4,124	24.48	\$ 4,243	25.15	\$ 4,359	25.84	\$ 4,479	\$ 48,298
21	23.79	1,903.20	\$ 4,124	24.48	\$ 4,243	25.15	\$ 4,359	25.84	\$ 4,479	26.66	\$ 4,621	\$ 49,483
22	24.48	1,958.40	\$ 4,243	25.15	\$ 4,359	25.84	\$ 4,479	26.66	\$ 4,621	27.44	\$ 4,756	\$ 50,918

Biweekly rate based on 80 hours of Step 1. Monthly and Annual rates based on 2,080 hours per year.

WPPA DEPUTY SHERIFFS' ASSOCIATION SALARY SCHEDULE - "L"
Effective 12/16/12 through 06/01/13

RANGE	STEP	HOURLY	BIWEEKLY	MONTHLY	ANNUAL
15	1	\$22.58	\$ 1,686.73	\$3,667	\$44,008
	2	23.44	1,750.97	3,807	45,685
	3	24.04	1,795.79	3,904	46,854
	4	24.77	1,850.32	4,023	48,277
	5	25.36	1,894.39	4,119	49,427
	6	26.15	1,953.41	4,247	50,966
	7	26.87	2,007.19	4,364	52,370
	8	27.88	2,082.64	4,528	54,338
	9	28.95	2,162.57	4,702	56,424
(Step 8 Effective December 19, 1999 after earning 169 longevity credits)					
(Step 9 Effective October 16, 1994 after earning 260 longevity credits)					
16	1	24.96	1,864.51	4,054	48,647
	2	25.61	1,913.07	4,159	49,914
	3	26.29	1,963.86	4,270	51,239
	4	26.97	2,014.66	4,380	52,565
	5	27.73	2,071.43	4,504	54,046
	6	28.76	2,148.37	4,671	56,053
	7	29.88	2,232.04	4,853	58,236
(Step 6 Effective December 19, 1999 after earning 169 longevity credits)					
(Step 7 Effective October 16, 1994 after earning 260 longevity credits)					
17	1	25.79	1,926.51	4,189	50,265
	2	26.43	1,974.32	4,293	51,512
	3	27.11	2,025.12	4,403	52,837
	4	27.88	2,082.64	4,528	54,338
	5	28.68	2,142.40	4,658	55,897
	6	29.76	2,223.07	4,834	58,002
	7	30.90	2,308.23	5,019	60,224
(Step 6 Effective December 19, 1999 after earning 169 longevity credits)					
(Step 7 Effective October 16, 1994 after earning 260 longevity credits)					

2012
MP Managerial/Professional Salary Schedule
For ranges coded with an 'M' in the salary schedule
Effective 12/16/12 through 06/01/13

	2	3	4	5	6	7	8	9	
range	hire	1 yr	2 yr	3 yr	4 yr	9 yr	13 yr	16 yr	range
5	20.04	21.01	22.01	23.07	23.78	24.51	25.24	26.03	5
6	21.13	22.15	23.21	24.32	25.09	25.85	26.63	27.43	6
7	22.43	23.52	24.64	25.84	26.61	27.42	28.26	29.12	7
8	24.12	25.29	26.50	27.77	28.62	29.50	30.41	31.34	8
9	26.21	27.44	28.75	30.16	31.11	32.06	33.01	34.03	9
10	28.41	29.77	31.20	32.70	33.69	34.73	35.82	36.93	10
11	30.78	32.26	33.81	35.40	36.51	37.63	38.80	39.98	11
12	33.11	34.69	36.37	38.10	39.30	40.49	41.73	43.01	12
13	35.67	37.36	39.17	41.04	42.28	43.59	44.90	46.27	13

2012
MP Senior Management Salary Schedule
For ranges coded with an 'M/P' in the salary schedule
Effective 12/16/12 through 06/01/13

	2	3	4	5	6	7	8	9	
range	hire	1 yr	2 yr	3 yr	4 yr	9 yr	13 yr	16 yr	range
14	38.15	40.06	42.01	44.07	45.43	46.88	48.31	49.79	14
15	40.84	42.85	44.94	47.16	48.63	50.12	51.69	53.29	15
16	43.68	45.84	48.09	50.47	52.00	53.64	55.28	56.97	16
17	46.77	49.05	51.45	54.00	55.65	57.38	59.15	61.02	17
18	50.03	52.49	55.09	57.75	59.57	61.39	63.32	65.26	18
19	53.54	56.16	58.91	61.83	63.74	65.71	67.74	69.85	19

DISTRICT 1199W/PROFESSIONALS FOR QUALITY HEALTH CARE SALARY SCHEDULE
For Positions Coded with "N" in the Salary Schedule
Effective 12/16/12 to 06/01/13

Classification Title	Range	Step	Rate	Rate	Rate	Rate
Communicable Disease Outreach Specialist	16	1	23.69	1,895.20	4,106	49,275
		2	24.45	1,956.00	4,238	50,856
		3	25.24	2,019.20	4,375	52,499
		4	26.04	2,083.20	4,514	54,163
		5	26.88	2,150.40	4,659	55,910
		6	27.74	2,219.20	4,808	57,699
		7	28.62	2,289.60	4,961	59,530
Graduate Nurse	17	1	27.27	2,181.60	4,727	56,722
		2	28.14	2,251.20	4,878	58,531
		3	29.05	2,324.00	5,035	60,424
		4	29.97	2,397.60	5,195	62,338
		5	30.93	2,474.40	5,361	64,334
		6	31.92	2,553.60	5,533	66,394
		7	32.95	2,636.00	5,711	68,536
Classification Title	Range	Step	Rate	Rate	Rate	Rate
Dental Health Coord Health Education Coord Public Health Dietician Public Health Info Officer Public Health Nurse	18	1	27.82	2,225.60	4,822	57,866
		2	28.72	2,297.60	4,978	59,738
		3	29.67	2,373.60	5,143	61,714
		4	30.60	2,448.00	5,304	63,648
		5	31.54	2,523.20	5,467	65,603
		6	32.62	2,609.60	5,654	67,850
		7	33.61	2,688.80	5,826	69,909
Classification Title	Range	Step	Rate	Rate	Rate	Rate
HIV/Aids Coordinator Inservice Educ Coord Occupational Therapist PH Epidemiologist Registered Dietician Registered Nurse WIC Leadworker Breastfeeding Coordinator Immunization Coordinator	18A	1	29.24	2,339.20	5,068	60,819
		2	30.18	2,414.40	5,231	62,774
		3	31.15	2,492.00	5,399	64,792
		4	32.14	2,571.20	5,571	66,851
		5	33.19	2,655.20	5,753	69,035
		6	34.20	2,736.00	5,928	71,136
		7	35.23	2,818.40	6,107	73,278
		Classification Title	Range	Step	Rate	Rate
Clinical Care Coordinator	19	1	30.70	2,456.00	5,321	63,856
		2	31.70	2,536.00	5,495	65,936
		3	32.73	2,618.40	5,673	68,078
		4	33.76	2,700.80	5,852	70,221
		5	34.80	2,784.00	6,032	72,384
		6	35.99	2,879.20	6,238	74,859
		7	37.08	2,966.40	6,427	77,126

^K Biweekly rate based on 80 hours.

^J Monthly and Annual rates based on 2,080 hours per year.

WPPA SUPERVISORY LAW ENFORCEMENT UNIT
SALARY SCHEDULE -
For Classifications with an "O"
Effective 12/16/12 through 06/01/13

RANGE	STEP	HOURLY	BIWEEKLY	MONTHLY	ANNUAL
17	1	\$ 29.19	\$ 2,335.20	\$ 5,060	\$ 60,715
	2	\$ 30.11	2,408.80	5,219	62,629
	3	\$ 30.99	2,479.20	5,372	64,459
	4	\$ 31.92	2,553.60	5,533	66,394
	5	\$ 33.07	2,645.60	5,732	68,786
	6	\$ 34.38	2,750.40	5,959	71,510
	7	\$ 35.72	2,857.60	6,191	74,298

RANGE	STEP	HOURLY	BIWEEKLY	MONTHLY	ANNUAL
19	1	\$ 31.27	\$ 2,501.60	\$ 5,420	\$ 65,042
	2	\$ 32.20	2,576.00	5,581	66,976
	3	\$ 33.15	2,652.00	5,746	68,952
	4	\$ 34.12	2,729.60	5,914	70,970
	5	\$ 35.37	2,829.60	6,131	73,570
	6	\$ 36.72	2,937.60	6,365	76,378
	7	\$ 38.14	3,051.20	6,611	79,331

Dane County Professional Employees Union, AFSCME, AFL-CIO
For ranges coded with an 'P' in the salary schedule
Effective 12/16/12 through 06/01/13

range	2 hire	3 1 yr	4 2 yr	5 3 yr	6 4 yr	7 9 yr	8 13 yr	9 16 yr	range
5	20.04	21.01	22.01	23.07	23.78	24.51	25.24	26.03	5
6	21.13	22.15	23.21	24.32	25.09	25.85	26.63	27.43	6
7	22.43	23.52	24.64	25.84	26.61	27.42	28.26	29.12	7
8	24.12	25.29	26.50	27.77	28.62	29.50	30.41	31.34	8
9	26.21	27.44	28.75	30.16	31.11	32.06	33.01	34.03	9
10	28.41	29.77	31.20	32.70	33.69	34.73	35.82	36.93	10
11	30.78	32.26	33.81	35.40	36.51	37.63	38.80	39.98	11
12	33.11	34.69	36.37	38.10	39.30	40.49	41.73	43.01	12
13	35.67	37.36	39.17	41.04	42.28	43.59	44.90	46.27	13
14	38.15	40.06	42.01	44.07	45.43	46.88	48.31	49.79	14

PROFESSIONAL SOCIAL WORKERS LOCAL 2634 AFSCME AFL-CIO
For positions coded 'SW' in the salary schedule
Effective 12/16/12 through 06/01/13

RANGE	STEP	HOURLY RATE	BIWEEKLY RATE	MONTHLY RATE	ANNUAL RATE
16-18	1	20.20	1,616.00	3,501	42,016
	2	21.24	1,699.20	3,682	44,179
18	1	22.21	1,776.80	3,850	46,197
	2	23.25	1,860.00	4,030	48,360
	3	24.45	1,956.00	4,238	50,856
	4	25.57	2,045.60	4,432	53,186
	5	26.79	2,143.20	4,644	55,723
19	1	23.25	1,860.00	4,030	48,360
	2	24.45	1,956.00	4,238	50,856
	3	25.57	2,045.60	4,432	53,186
	4	26.79	2,143.20	4,644	55,723
	5	28.08	2,246.40	4,867	58,406
20	1	24.45	1,956.00	4,238	50,856
	2	25.57	2,045.60	4,432	53,186
	3	26.79	2,143.20	4,644	55,723
	4	28.08	2,246.40	4,867	58,406
	5	29.47	2,357.60	5,108	61,298
21	1	25.66	2,052.80	4,448	53,373
	2	26.87	2,149.60	4,657	55,890
	3	28.13	2,250.40	4,876	58,510
	4	29.47	2,357.60	5,108	61,298
	5	30.93	2,474.40	5,361	64,334

Advancement to Range 18 Step 1 and beyond is dependent upon prior accumulation of 120 hours of in-service credits. If the 120 hours are accumulated after earning more than 19.5 longevity credits, the the employee shall be placed on the Step appropriate to the number of longevity credits, with no retroactivity.

**BUILDING & CONSTRUCTION TRADES COUNCIL OF S CENTRAL WI,
SALARY SCHEDULE - "T"
Effective 12/16/12 through 06/01/13**

CLASSIFICATION	12/16/2012
Carpenter	\$ 27.04
Electrician	\$ 31.60
Apprentice Electrician (40%)	\$ 12.64
(45%)	14.22
(55%)	17.38
(65%)	20.53
(75%)	23.71
(80%)	25.28
(100%)	31.60
Painter	\$ 25.98
Apprentice Painter (45%)	\$ 11.70
(55%)	14.29
(65%)	16.90
(75%)	19.49
(85%)	22.08
Steamfitter	\$ 33.28
Apprentice Steamfitter (40%)	\$ 13.31
(45%)	14.97
(50%)	16.64
(55%)	18.31
(60%)	19.97
(65%)	21.64
(70%)	23.29
(75%)	24.96
(80%)	26.63
(85%)	28.29